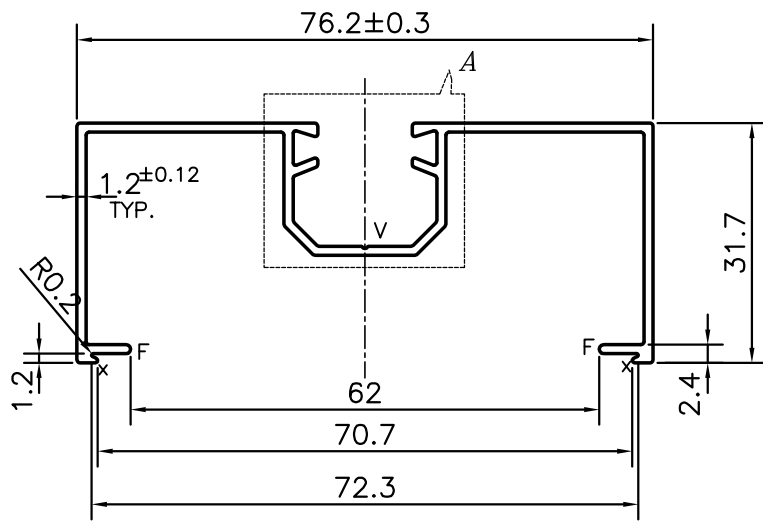
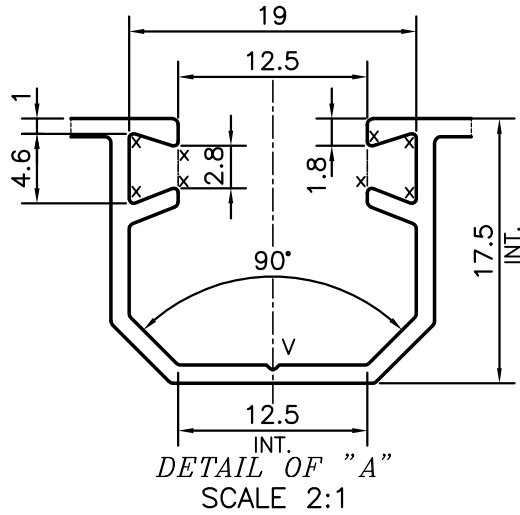


P-12801

X1674



x = RADIUS 0.3 mm. (10 PLACES)
 F = FULL RADIUS (2 PLACES)
 V = VEE GROOVE 0.3x90° (1 PLACE)

TOLERANCE CHART CD = CIRCUMSCRIBING CIRCLE

DIMENSION	CD ≤ 100	100 < CD < 200	200 < CD < 300	300 < CD < 500
UPTO 10mm	±0.25	±0.30	±0.35	±0.40
10.0 - 25.0	±0.30	±0.40	±0.50	±0.60
25.0 - 50.0	±0.50	±0.60	±0.80	±0.90
50.0 - 100	±0.70	±0.90	±1.10	±1.30
100 - 150	-	±1.10	±1.30	±1.50
150 - 200	-	±1.3	±1.50	±1.80
200 - 300	-	-	±1.70	±2.10
300 - 450	-	-	-	±2.80



SYMBOL OF QUALITY
 AN ISO 9001 COMPANY

JINDAL ALUMINIUM LTD.
 BANGALORE-560073 (INDIA)

NAME		DATE
DRAWN	PARVESH	24-05-2013
CHECKED		
APPROVED	S.S.GARG	31-05-2013
SCALE		1:1
AREA mm ²		232.734
PERIMETER mm.		383.041
WEIGHT kg/m		0.628
DRAWING No.	SECTION No.	
P-12801	-	
X1674	X1674	

1. ALL DIMENSIONS ARE IN mm.
2. ROUND OFF ALL SHARP CORNERS WITH 0.40 mm.
3. TOLERANCES WILL BE AS PER BS:EN-755-9 , UNLESS OTHERWISE SPECIFIED

PARTY'S NAME	COMARK LANKA (PVT.) LIMITED, COLOMBO
PARTY'S DRAWING No.	9054
ALLOY & TEMPER	6063 T6
DESCRIPTION	WINDOW SECTION