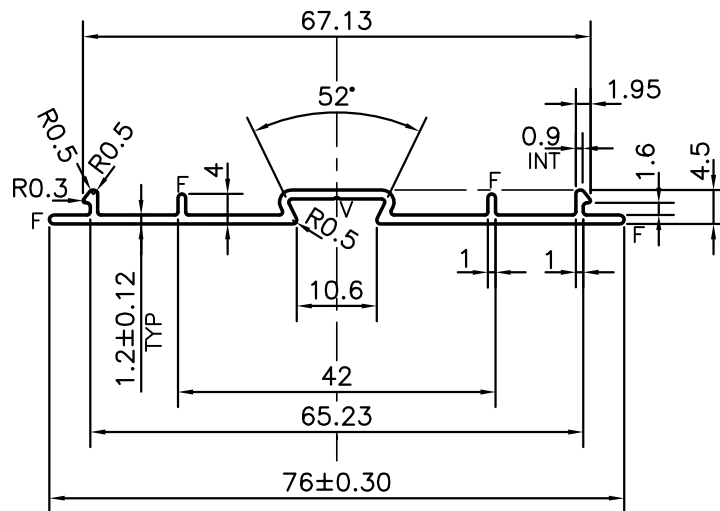


P-12827

X1678

TOLERANCE APPROVAL AS PER Sh. U.C.D



TOLERANCE CHART CD = CIRCUMSCRIBING CIRCLE

	CD ≤ 100	100 < CD ≤ 200	200 < CD < 300	300 < CD < 500
UPTO 10mm -	±0.25	±0.30	±0.35	±0.40
10.0 - 25.0 -	±0.30	±0.40	±0.50	±0.60
25.0 - 50.0 -	±0.50	±0.60	±0.80	±0.90
50.0 - 100.0 -	±0.70	±0.90	±1.10	±1.30
100 - 150 -	-	±1.10	±1.30	±1.50
150 - 200 -	-	±1.3	±1.50	±1.80
200 - 300 -	-	-	±1.70	±2.10
300 - 450 -	-	-	-	±2.80

V = V GROOVE 0.25x90°

F = FULL RADIUS (4 PLACES)



SYMBOL OF QUALITY  
AN ISO 9001 COMPANY

**JINDAL ALUMINIUM LTD.**  
BANGALORE-560073 (INDIA)

	NAME	DATE
DRAWN	J.P.KAUSHIK	08-06-2013
CHECKED		
APPROVED	S.S.GARG	21-06-2013
SCALE		1:1
AREA mm <sup>2</sup>		114.546
PERIMETER mm.		191.323
WEIGHT kg/m		0.309
DRAWING No.		SECTION No.
P-12827		-
X1678		X1678

- ALL DIMENSIONS ARE IN mm.
- ROUND OFF ALL SHARP CORNERS WITH 0.40 mm.
- TOLERANCES WILL BE AS PER BS:EN-755-9 UNLESS OTHERWISE SPECIFIED

PARTY'S NAME	COMARK LANKA (PVT.) LIMITED, COLOMBO
PARTY'S DRAWING No.	9157
ALLOY & TEMPER	6063 T6
DESCRIPTION	WINDOW SECTION