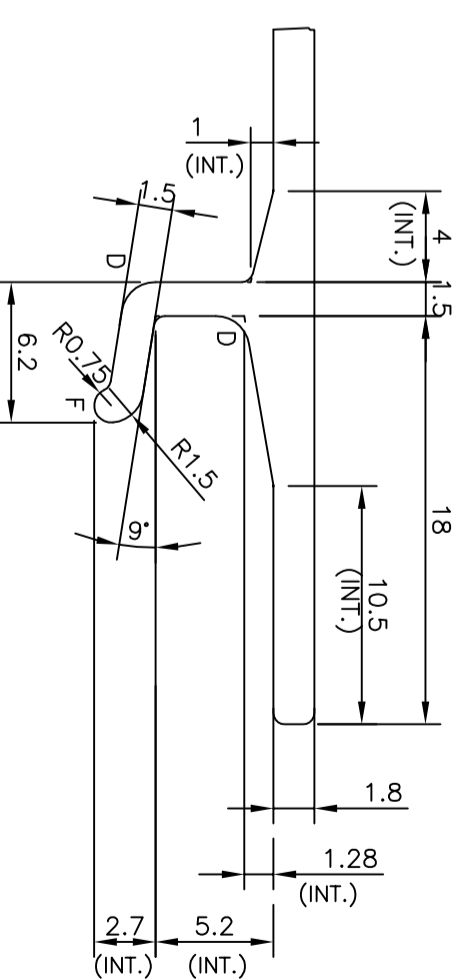
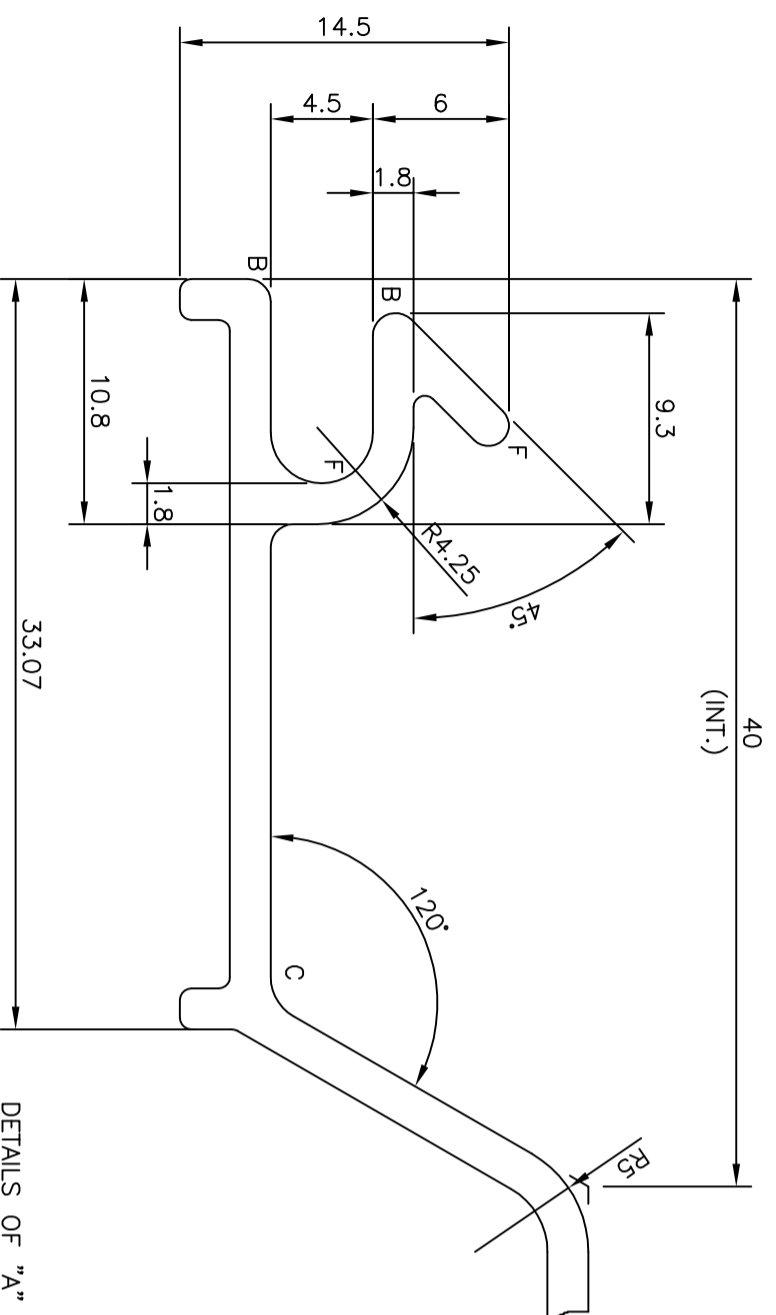


- F = FULL RADIUS (3 PLACES)
- B = 1 mm RADIUS (3 PALCES)
- C = 2 mm RADIUS (1 PALCE)
- D = 1.5 mm RADIUS (2 PALCES)

1. STRAIGHTNESS=1.0mm/M
 2. TWIST=1.0mm/M
 3. FLATNESS =1.2mm ON WIDTH
- ADDED ON DATE 10-02-2014
AS PER E-MAIL



DETAILS OF "B"
SCALE 3:1



DETAILS OF "A"
SCALE 3:1

TOLERANCE CHART CD = CIRCUMSCRIBING CIRCLE

DIMENSION	CD<100	100<CD<200	200<CD<300	300<CD<500
10.0 - 10mm	±0.25	±0.30	±0.35	±0.40
10.0 - 25.0	±0.30	±0.40	±0.50	±0.60
25.0 - 50.0	±0.50	±0.60	±0.80	±0.90
50.0 - 100	±0.70	±0.90	±1.10	±1.30
100 - 150	-	±1.10	±1.30	±1.50
150 - 200	-	±1.3	±1.50	±1.80
200 - 300	-	-	±1.50	±2.10
300 - 450	-	-	-	±2.80

<p>SYMBOL OF QUALITY AN ISO 9001 COMPANY</p>		<p>JINDAL ALUMINIUM LTD. BANGALORE-560073 (INDIA)</p>	
<p>1. ALL DIMENSIONS ARE IN mm. 2. ROUND OFF ALL SHARP CORNERS WITH 0.50 mm. 3. TOLERANCES WILL BE AS PER BS:EN-755-9 UNLESS OTHERWISE SPECIFIED</p>			
PARTY'S NAME	PAYNES WHOLESALERS LTD., NEW ZEALAND		
PARTY'S DRAWING No.	130045D		
ALLOY & TEMPER	6060 T5		
DESCRIPTION	CLADDING SECTION		
DRAWN	NAME	DATE	
CHECKED	SRIYATHSA	05-10-2013	
APPROVED	S.S.GARG	06-10-2013	
SCALE	1:1		
AREA	mm ²	503.579	
PERIMETER	mm.	541.936	
WEIGHT	kg/m	1.360	
DRAWING No.	SECTION No.		
P-13055-1	-		
X1696	X1696		