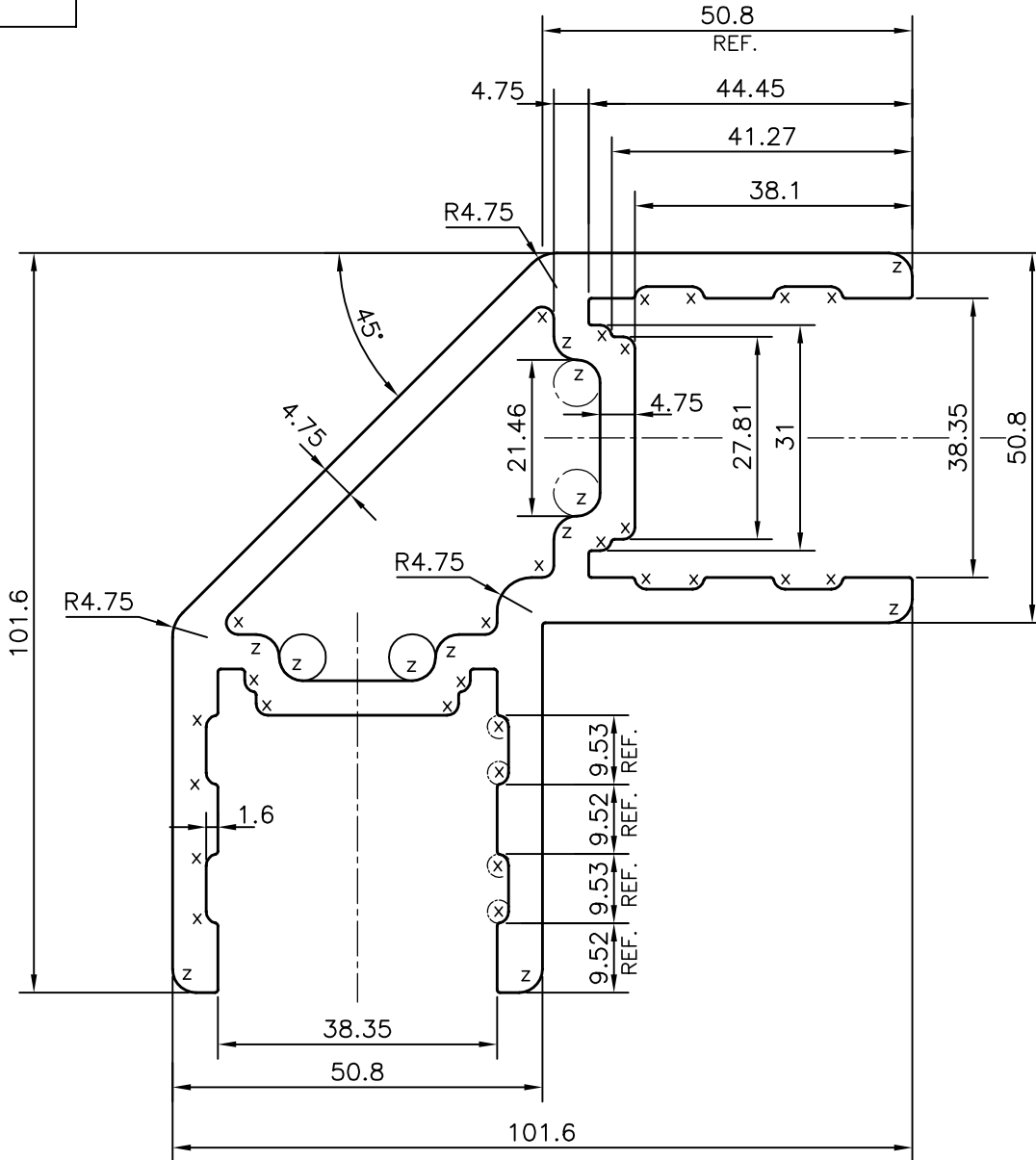


P-13695-1

X1777



X = RADIUS 1.6 mm. (28 PLACES)
 Z = RADIUS 3.2 mm. (12 PLACES)



SYMBOL OF QUALITY
 AN ISO 9001 COMPANY

JINDAL ALUMINIUM LTD.
 BANGALORE-560073 (INDIA)

| | NAME | DATE |
|----------------------|-------------|------------|
| DRAWN | PARVESH | 07-07-2014 |
| CHECKED | | |
| APPROVED | S.S.GARG | 04-08-2014 |
| SCALE | | 1:1 |
| AREA mm ² | | 1962.614 |
| PERIMETER mm. | | 578.15 |
| WEIGHT kg/m | | 5.299 |
| DRAWING No. | SECTION No. | |
| P-13695-1 | - | |
| X1777 | X1777 | |
| | | |
| | | |

1. ALL DIMENSIONS ARE IN mm.
2. ROUND OFF ALL SHARP CORNERS WITH 0.40 mm.
3. TOLERANCES WILL BE AS PER ANSI:H35.2-2009 , UNLESS OTHERWISE SPECIFIED

| | |
|---------------------|---|
| PARTY'S NAME | PROSOURCE (ESSI) INDL. SOLUTIONS INC., CANADA |
| PARTY'S DRAWING No. | AS PER AUTOCAD DRAWING |
| ALLOY & TEMPER | 6063 T6 |
| DESCRIPTION | ARCHITECTURAL SECTION |