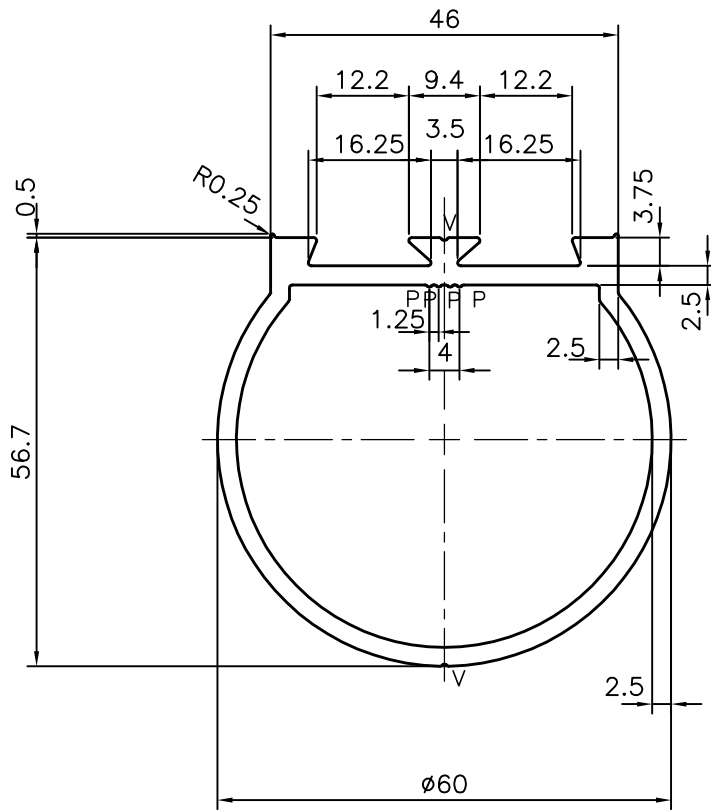


P-14056

X1820



V = V GROOVE 0.3x90°(2 PLACES)

P = PIP = 0.3x90°(4 PLACES)



SYMBOL OF QUALITY
AN ISO 9001 COMPANY

JINDAL ALUMINIUM LTD.
BANGALORE-560073 (INDIA)

	NAME	DATE
DRAWN	J.P.KAUSHIK	20-10-2014
CHECKED		
APPROVED	S.S.GARG	29-11-2014

1. ALL DIMENSIONS ARE IN mm.
2. ROUND OFF ALL SHARP CORNERS WITH 0.40 mm.
3. TOLERANCES WILL BE AS PER BS:EN-755-9, UNLESS OTHERWISE SPECIFIED

SCALE	1:1
AREA mm ²	518.124
PERIMETER mm.	223.385
WEIGHT kg/m	1.399

PARTY'S NAME	PD ALUMINIUM LTD., UK	DRAWING No.	P-14056	SECTION No.	-
PARTY'S DRAWING No.	AS PER SAMPLE (CS 39)		X1820		X1820
ALLOY & TEMPER	6063 T6				
DESCRIPTION	MISC. SECTION				