

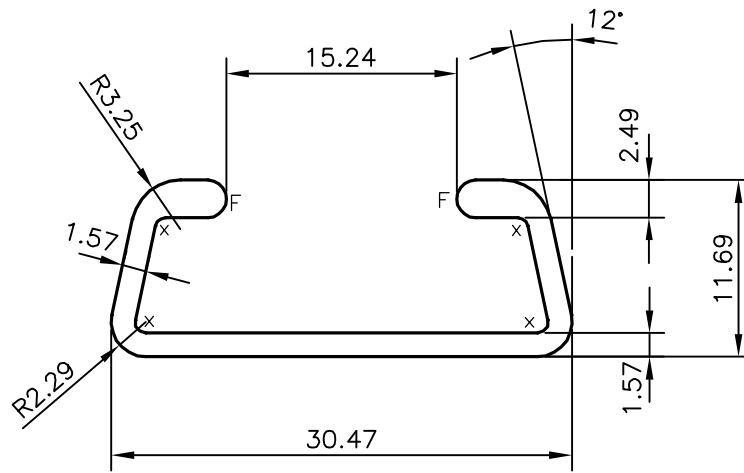
P-15351

X1941



1:1

**NO EXPOSED SURFACE**



x = 0.71 RADIUS (4 PLACES)  
 F = FULL RADIUS (2 PLACES)



SYMBOL OF QUALITY  
 AN ISO 9001 COMPANY

**JINDAL ALUMINIUM LTD.**  
 BANGALORE-560073 (INDIA)

	NAME	DATE
DRAWN	J.P.KAUSHIK	25-11-2015
CHECKED		
APPROVED	S.S.GARG	10-12-2015
SCALE		2:1
AREA mm <sup>2</sup>		95.845
PERIMETER mm.		115.898
WEIGHT kg/m		0.259
DRAWING No.	SECTION No.	
P-15351	-	
X1941	X1941	

1. ALL DIMENSIONS ARE IN mm.
2. ROUND OFF ALL SHARP CORNERS WITH 0.40 mm.
3. TOLERANCES WILL BE AS PER BS:EN-755-9 , UNLESS OTHERWISE SPECIFIED

PARTY'S NAME	UNIVERSAL FABRICATING-CANADA
PARTY'S DRAWING No.	AS PER AutoCAD DRAWING ES-06108
ALLOY & TEMPER	6063 T6
DESCRIPTION	WIRE LOCK BASE SECTION