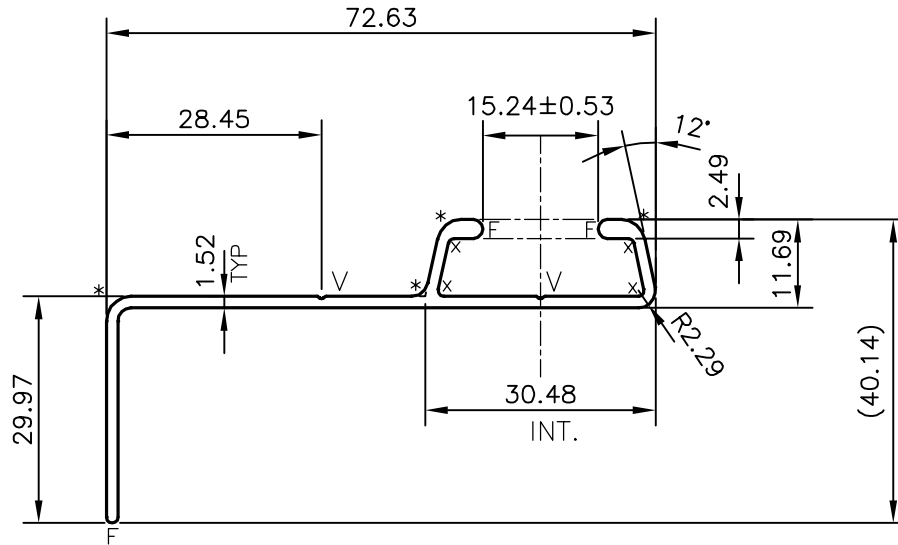


P-15359

X1949



x= 0.76 RADIUS (4 PLACES)
 F= FULL RADIUS (3 PLACES)
 *= 3.25 RADIUS (4 PLACES)
 V = V GROOVE 0.3x90° (2 PLACES)



SYMBOL OF QUALITY
 AN ISO 9001 COMPANY

JINDAL ALUMINIUM LTD.
 BANGALORE-560073 (INDIA)

	NAME	DATE
DRAWN	J.P.KAUSHIK	26-11-2015
CHECKED		
APPROVED	S.S.GARG	10-12-2015
SCALE		1:1
AREA mm ²		200.284
PERIMETER mm.		254.75
WEIGHT kg/m		0.541
DRAWING No.	SECTION No.	
P-15359	-	
X1949	X1949	

1. ALL DIMENSIONS ARE IN mm.
2. ROUND OFF ALL SHARP CORNERS WITH 0.40 mm.
3. TOLERANCES WILL BE AS PER BS:EN-755-9 , UNLESS OTHERWISE SPECIFIED

PARTY'S NAME	UNIVERSAL FABRICATING-CANADA
PARTY'S DRAWING No.	AS PER AutoCAD DRAWING S-5241
ALLOY & TEMPER	6063 T6
DESCRIPTION	GABLE EXTRUSION