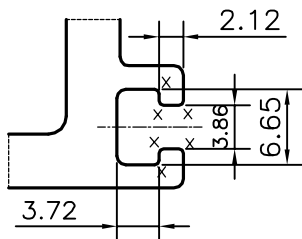
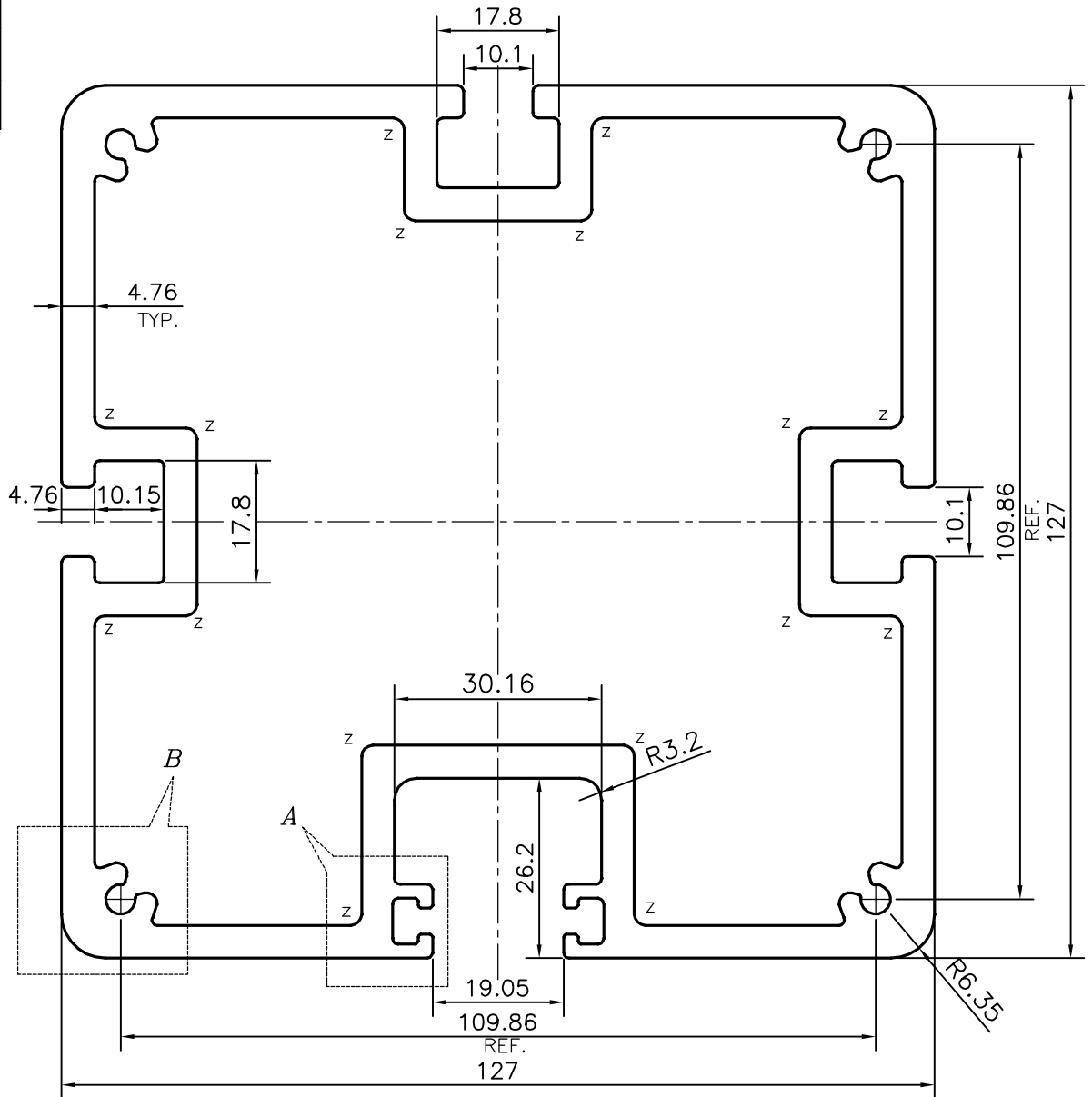
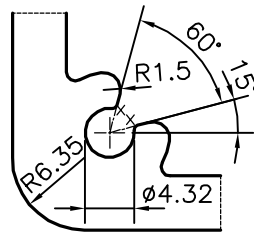


P-15691

X1981



DETAIL OF "A"  
SCALE 1.5:1



DETAIL OF "A"  
SCALE 1.5:1

X = RADIUS 0.4 mm. (20 PLACES)  
Z = RADIUS 1.6 mm. (16 PLACES)

**ROUND OFF ALL SHARP CORNERS WITH 0.80 mm.**



SYMBOL OF QUALITY  
AN ISO 9001 COMPANY

**JINDAL ALUMINIUM LTD.**  
BANGALORE-560073 (INDIA)

	NAME	DATE
DRAWN	PARVESH	18-03-2016
CHECKED		
APPROVED	S.S. GARG	04-04-2016
SCALE		1:1
AREA mm <sup>2</sup>		3320.22
PERIMETER mm.		725.417
WEIGHT kg/m		8.965
DRAWING No.	SECTION No.	
P-15691	-	
X1981	X1981	

1. ALL DIMENSIONS ARE IN mm.
2. ROUND OFF ALL SHARP CORNERS WITH 0.40 mm.
3. TOLERANCES WILL BE AS PER ANSI:H35.2-2009 , UNLESS OTHERWISE SPECIFIED

PARTY'S NAME	LUCID MANAGEMENT GROUP, CANADA
PARTY'S DRAWING No.	1005965
ALLOY & TEMPER	6005 T5
DESCRIPTION	STRUCTURAL MISC. SECTION-KEY FLAT FOR WALL