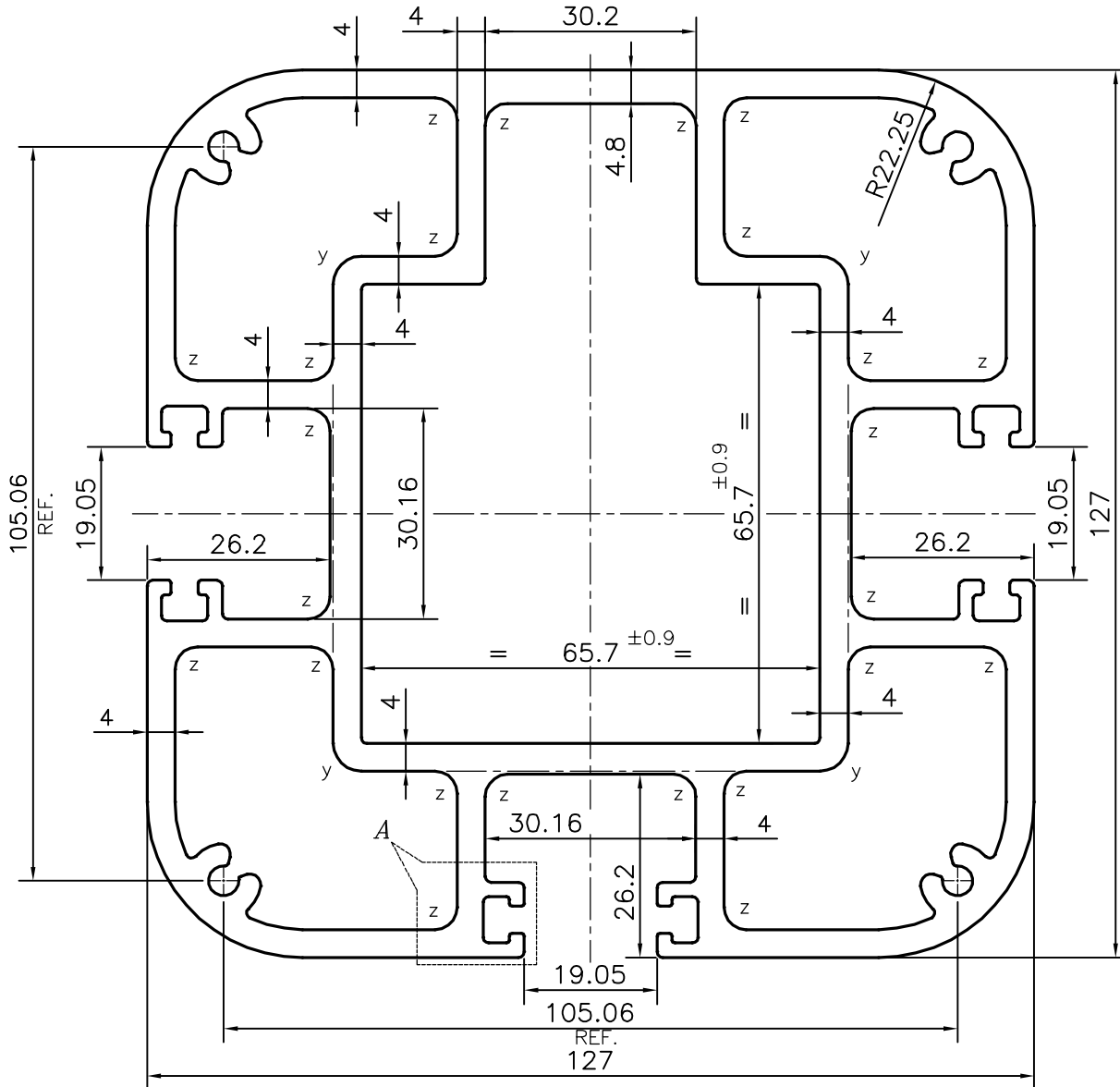
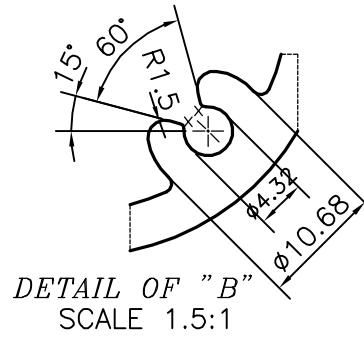
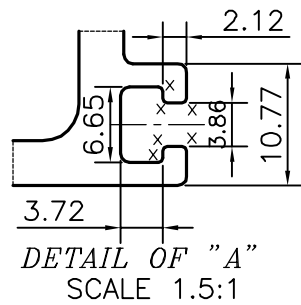



P-15692-1

X1982



y = RADIUS 4 mm. (4 PLACES)
 X = RADIUS 0.4 mm. (36 PLACES)
 Z = RADIUS 3.2 mm. (24 PLACES)

ROUND OFF ALL SHARP CORNERS WITH 0.80 mm.

 SYMBOL OF QUALITY AN ISO 9001 COMPANY	JINDAL ALUMINIUM LTD. BANGALORE-560073 (INDIA)	NAME	DATE
		DRAWN	PARVESH 23-03-2016
		CHECKED	
		APPROVED	S.S. GARG 04-04-2016
1. ALL DIMENSIONS ARE IN mm. 2. ROUND OFF ALL SHARP CORNERS WITH 0.40 mm. 3. TOLERANCES WILL BE AS PER ANSI:H35.2-2009 , UNLESS OTHERWISE SPECIFIED		SCALE	1:1
		AREA mm ²	3604.882
		PERIMETER mm.	772.499
		WEIGHT kg/m	9.733
PARTY'S NAME	LUCID MANAGEMENT GROUP, CANADA	DRAWING No.	SECTION No.
PARTY'S DRAWING No.	1005996	P-15692-1	-
ALLOY & TEMPER	6005 T5	X1982	X1982
DESCRIPTION	STRUCTURAL MISC. SECTION-POLE EXTRUSION		