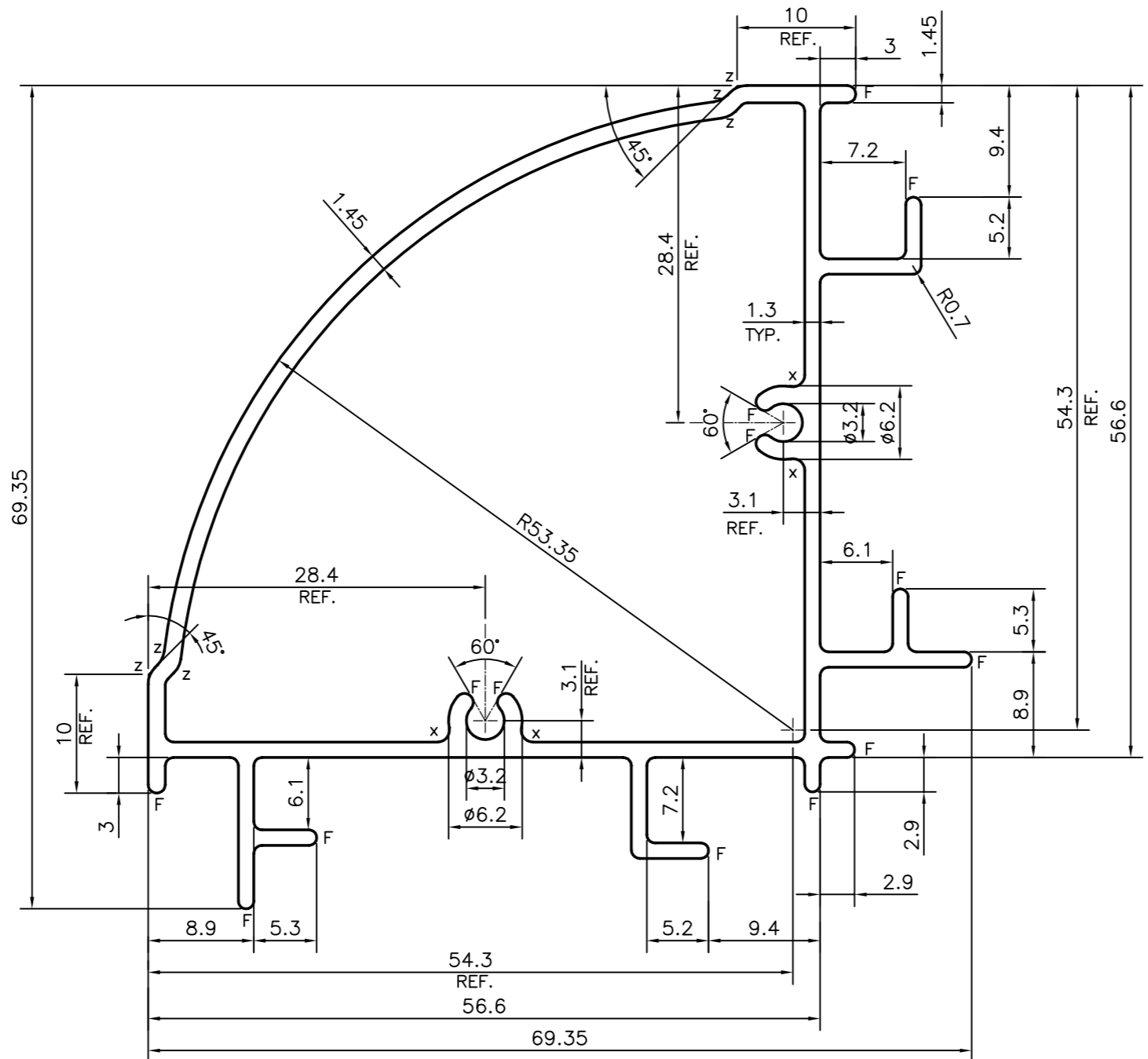
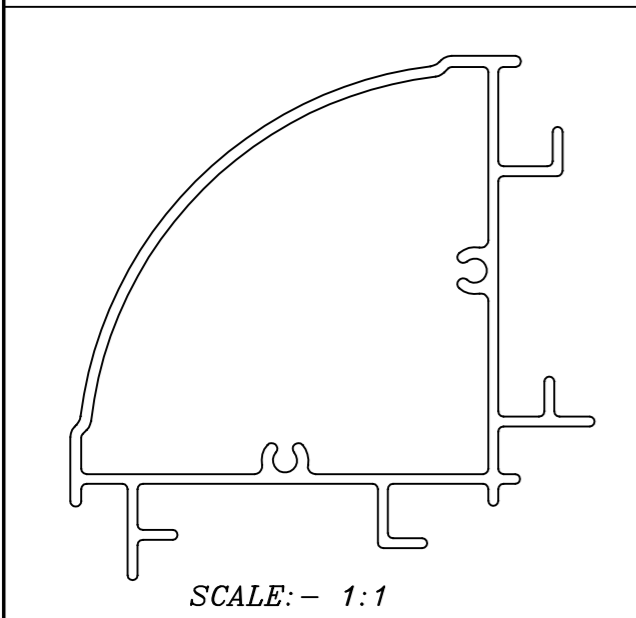


P-16223  
X2075




Z = RADIUS 2 mm. (6 PLACES)  
X = RADIUS 1 mm. (4 PLACES)  
F = FULL RADIUS (14 PLACES)

UNSPECIFIED CORNERS RADIUS WILL BE 0.70 mm.



TOLERANCES ON OVERALL WIDTHS & WIDTHS ACROSS FLATS OF BARS, & REGULAR SECTIONS			
UPTO 6.40mm - ±0.20	UPTO 32.0mm - ±0.38	UPTO 120.0mm - ±0.85	1. STRAIGHTNESS=1.7mm/M 2. TWIST=1.7mm/M 3. ANGULARITY= ±2° 4. FLATNESS =0.007xWIDTH
UPTO 10.0mm - ±0.23	UPTO 50.0mm - ±0.46	UPTO 160.0mm - ±1.02	
UPTO 12.0mm - ±0.25	UPTO 60.0mm - ±0.53	UPTO 200.0mm - ±1.14	
UPTO 16.0mm - ±0.28	UPTO 80.0mm - ±0.69	UPTO 250.0mm - ±1.40	
UPTO 25.0mm - ±0.30	UPTO 100.0mm - ±0.75	UPTO 300.0mm - ±1.65	

 SYMBOL OF QUALITY AN ISO 9001 COMPANY	<b>JINDAL ALUMINIUM LTD.</b> BANGALORE-560073 (INDIA)	NAME	DATE
		DRAWN	PARVESH 17-08-2016
1. ALL DIMENSIONS ARE IN mm. 2. ROUND OFF ALL SHARP CORNERS WITH 0.40 mm. 3. TOLERANCES WILL BE AS PER IS:6477-1983, UNLESS OTHERWISE SPECIFIED		CHECKED	
		APPROVED	S.S. GARG 20-09-2016
PARTY'S NAME XINDO WINDOW PVT. LTD., CHENNAI		SCALE	2:1
		AREA mm <sup>2</sup>	396.979
PARTY'S DRAWING No. AS PER AUTOCAD DRAWING		PERIMETER mm.	340.95
		WEIGHT kg/m	1.072
ALLOY & TEMPER HE9 WP		DRAWING No.	SECTION No.
		P-16223	-
DESCRIPTION ARCHITECTURAL SECTION		X2075	X2075