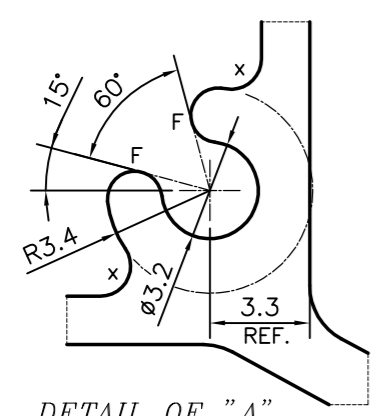
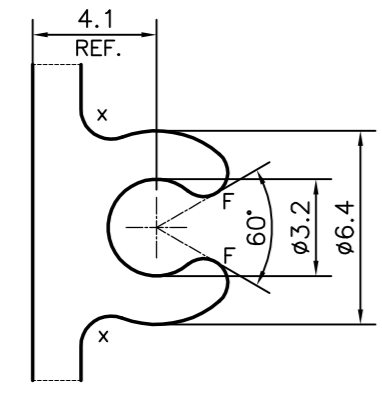


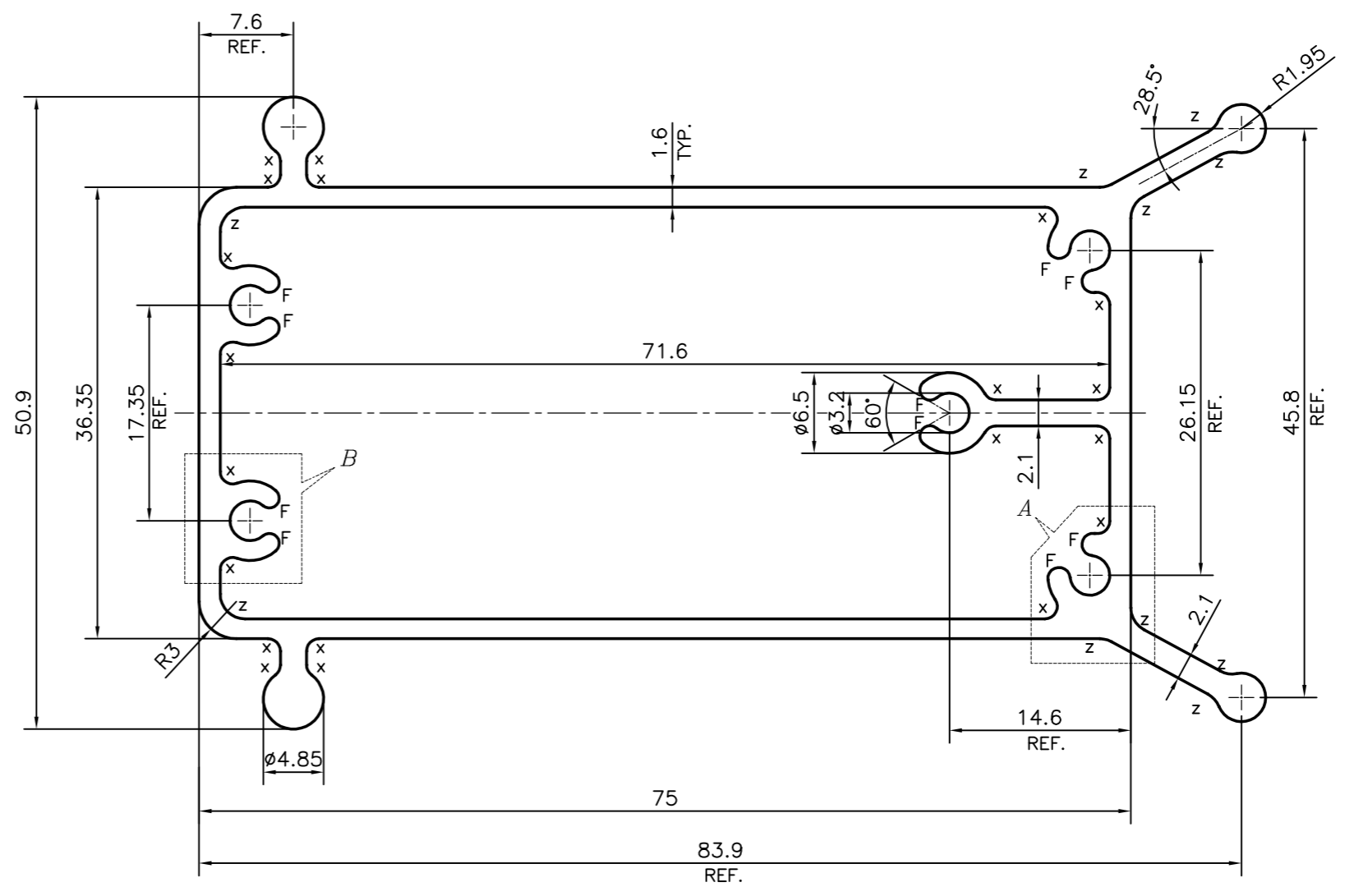
P-16225-2  
X2077



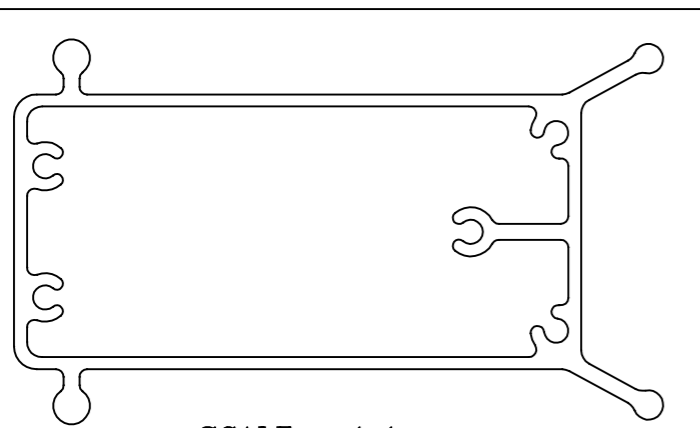
DETAIL OF "A"  
SCALE 4:1



DETAIL OF "B"  
SCALE 4:1



Z = RADIUS 2 mm. (10 PLACES)  
X = RADIUS 1 mm. (20 PLACES)  
F = FULL RADIUS (8 PLACES)



SCALE: - 1:1

TOLERANCES ON OVERALL WIDTHS & WIDTHS ACROSS FLATS OF BARS, & REGULAR SECTIONS

|                     |                      |                      |   |
|---------------------|----------------------|----------------------|---|
| UPTO 6.40mm - ±0.20 | UPTO 32.0mm - ±0.38  | UPTO 120.0mm - ±0.85 | 1. STRAIGHTNESS=1.7mm/M<br>2. TWIST=1.7mm/M<br>3. ANGULARITY= ±2°<br>4. FLATNESS =0.007xWIDTH |
| UPTO 10.0mm - ±0.23 | UPTO 50.0mm - ±0.46  | UPTO 160.0mm - ±1.02 |   |
| UPTO 12.0mm - ±0.25 | UPTO 60.0mm - ±0.53  | UPTO 200.0mm - ±1.14 |   |
| UPTO 16.0mm - ±0.28 | UPTO 80.0mm - ±0.69  | UPTO 250.0mm - ±1.40 |   |
| UPTO 25.0mm - ±0.30 | UPTO 100.0mm - ±0.75 | UPTO 300.0mm - ±1.65 |   |

|  |  |                                 |                      |             |
|--|--|---------------------------------|----------------------|-------------|
| <br>SYMBOL OF QUALITY<br>AN ISO 9001 COMPANY   | <b>JINDAL ALUMINIUM LTD.</b><br>BANGALORE-560073 (INDIA) | NAME                            | DATE                 |             |
|  |  | DRAWN                           | PARVESH 01-09-2016   |             |
|  |  | CHECKED                         |                      |             |
|  |  | APPROVED                        | S.S. GARG 20-09-2016 |             |
| 1. ALL DIMENSIONS ARE IN mm.<br>2. ROUND OFF ALL SHARP CORNERS WITH 0.40 mm.<br>3. TOLERANCES WILL BE AS PER IS:6477-1983 , UNLESS OTHERWISE SPECIFIED |  | SCALE                           | 2:1                  |             |
|  |  | AREA mm <sup>2</sup>            | 573.514              |             |
|  |  | PERIMETER mm.                   | 301.64               |             |
| PARTY'S NAME   |  | XINDO WINDOW PVT. LTD., CHENNAI | WEIGHT kg/m          | 1.548       |
| PARTY'S DRAWING No.  |  | AS PER AUTOCAD DRAWING          | DRAWING No.          | SECTION No. |
| ALLOY & TEMPER   |  | HE9 WP                          | P-16225-2            | -           |
| DESCRIPTION  |  | ARCHITECTURAL SECTION           | X2077                | X2077       |