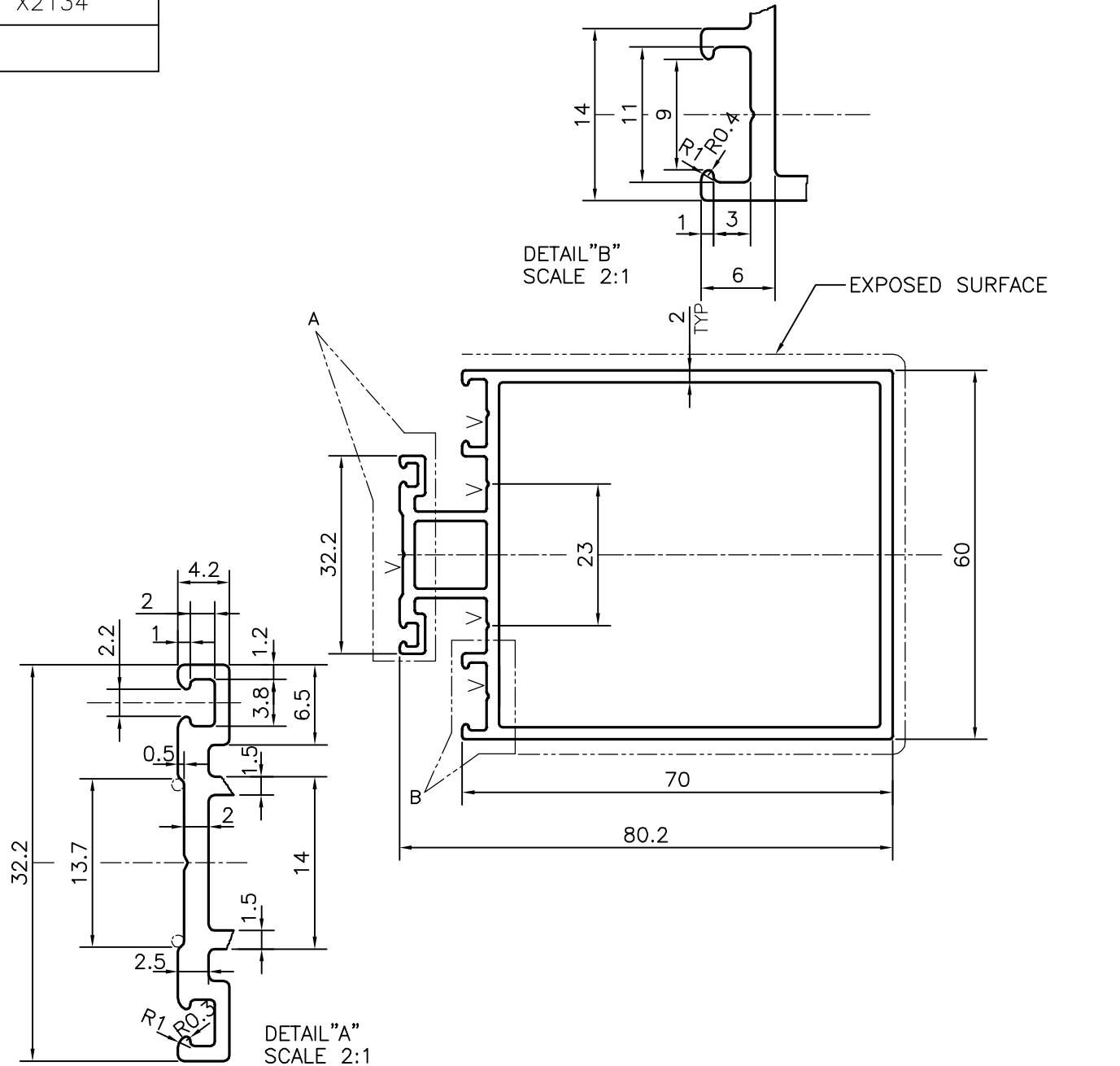


P-16992


X2134



V = V GROOVE 0.3x90° (5 PLACES)

TOLERANCES ON OVERALL DIMENSIONS OF HOLLOW SECTIONS

|                     |                      |                      |   |
|---------------------|----------------------|----------------------|---|
| UPTO 20.0mm - ±0.30 | UPTO 80.0mm - ±0.70  | UPTO 180.0mm - ±1.27 | 1. STRAIGHTNESS=1.7mm/M<br>2. TWIST=1.7mm/M<br>3. ANGULARITY= ±2°<br>4. FLATNESS =0.006xWIDTH |
| UPTO 30.0mm - ±0.38 | UPTO 100.0mm - ±0.80 | UPTO 200.0mm - ±1.40 |   |
| UPTO 40.0mm - ±0.45 | UPTO 120.0mm - ±0.90 | UPTO 225.0mm - ±1.52 |   |
| UPTO 50.0mm - ±0.52 | UPTO 140.0mm - ±1.00 |                      |   |
| UPTO 60.0mm - ±0.60 | UPTO 160.0mm - ±1.14 |                      |   |

|  |  |                      |                        |
|--|--|----------------------|------------------------|
| <br>SYMBOL OF QUALITY<br>AN ISO 9001 COMPANY                        | <b>JINDAL ALUMINIUM LTD.</b><br>BANGALORE-560073 (INDIA) | NAME                 | DATE                   |
|  |  | DRAWN                | J.P.KAUSHIK 15-04-2017 |
|  |  | CHECKED              |                        |
|  |  | APPROVED             | B.NATARAJA 27-04-2017  |
| 1. ALL DIMENSIONS ARE IN mm.<br>2. ROUND OFF ALL SHARP CORNERS WITH 0.40 mm.<br>3. TOLERANCES WILL BE AS PER IS:6477-1983 , UNLESS OTHERWISE SPECIFIED |  | SCALE                | 1:1                    |
|  |  | AREA mm <sup>2</sup> | 626.033                |
|  |  | PERIMETER mm.        | 371.933                |
| PARTY'S NAME   | TEAM WORK GLASS SOLUTION PVT. LTD., BANGALORE            | WEIGHT kg/m          | 1.690                  |
| PARTY'S DRAWING No.  | AS PER DRAWING-TWS 2017 002                              | DRAWING No.          | P-16992                |
| ALLOY & TEMPER   | 6063 T6  | SECTION No.          | X2134                  |
| DESCRIPTION  | TRANSOM SECTION  |                      |                        |