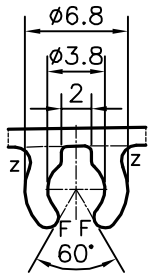
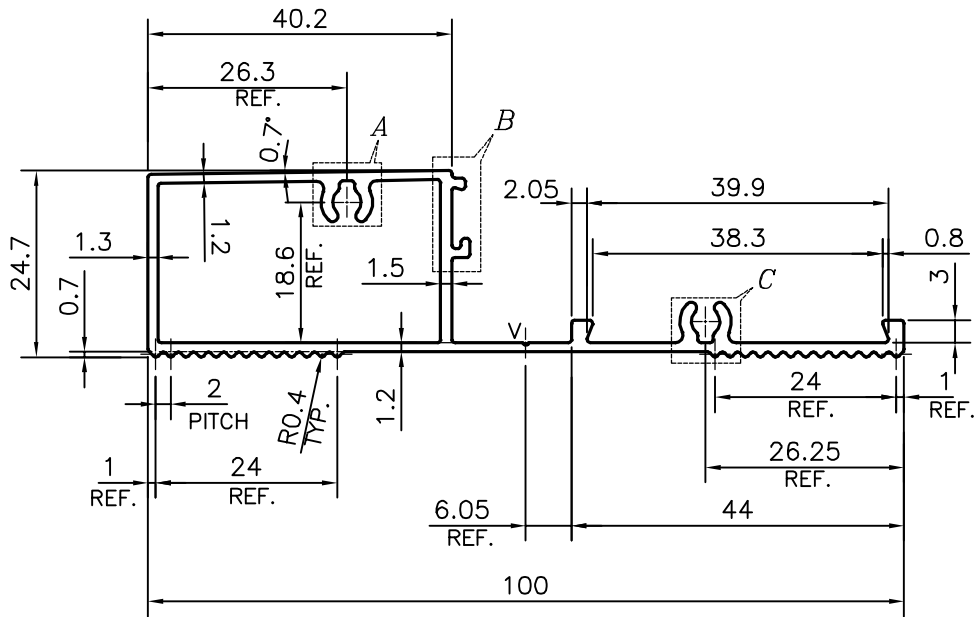
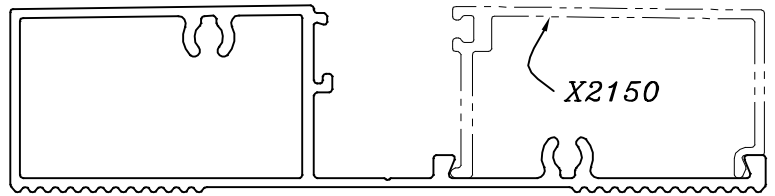
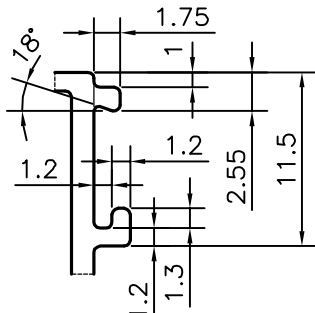


P-17026

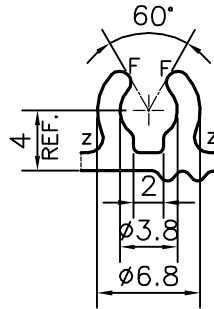
X2149



DETAIL OF "A"
SCALE 2:1



DETAIL OF "B"
SCALE 2:1



DETAIL OF "C"
SCALE 2:1

V = VEE GROOVE 0.3x90° (1 PLACE)
F = FULL RADIUS (4 PLACES)
Z = RADIUS 1 mm. (4 PLACES)

TOLERANCES ON OVERALL WIDTHS & WIDTHS ACROSS FLATS OF BARS, & REGULAR SECTIONS

| | | | |
|---------------------|----------------------|----------------------|---|
| UPTO 6.40mm - ±0.20 | UPTO 32.0mm - ±0.38 | UPTO 120.0mm - ±0.85 | 1. STRAIGHTNESS=1.7mm/M 2. TWIST=1.7mm/M 3. ANGULARITY= ±2° 4. FLATNESS =0.007xWIDTH |
| UPTO 10.0mm - ±0.23 | UPTO 50.0mm - ±0.46 | UPTO 160.0mm - ±1.02 | |
| UPTO 12.0mm - ±0.25 | UPTO 60.0mm - ±0.53 | UPTO 200.0mm - ±1.14 | |
| UPTO 16.0mm - ±0.28 | UPTO 80.0mm - ±0.69 | UPTO 250.0mm - ±1.40 | |
| UPTO 25.0mm - ±0.30 | UPTO 100.0mm - ±0.75 | UPTO 300.0mm - ±1.65 | |



SYMBOL OF QUALITY
AN ISO 9001 COMPANY

JINDAL ALUMINIUM LTD.
BANGALORE-560073 (INDIA)

| | NAME | DATE |
|----------|------------|------------|
| DRAWN | PARVESH | 02-05-2017 |
| CHECKED | | |
| APPROVED | B.NATARAJA | 12-05-2017 |

- ALL DIMENSIONS ARE IN mm.
- ROUND OFF ALL SHARP CORNERS WITH 0.40 mm.
- TOLERANCES WILL BE AS PER IS:6477-1983 , UNLESS OTHERWISE SPECIFIED

| | |
|----------------------|---------|
| SCALE | 1:1 |
| AREA mm ² | 304.546 |
| PERIMETER mm. | 302.498 |
| WEIGHT kg/m | 0.822 |

| | |
|---------------------|---|
| PARTY'S NAME | TEAM WORK GLASS SOLUTIONS PVT LTD., HYDERABAD |
| PARTY'S DRAWING No. | WL-09 |
| ALLOY & TEMPER | 6063 T6 |
| DESCRIPTION | ARCHITECTURAL SECTION-HORIZONTAL WALL PROFILE |

| | |
|-------------|-------------|
| DRAWING No. | SECTION No. |
| P-17026 | - |
| X2149 | X2149 |