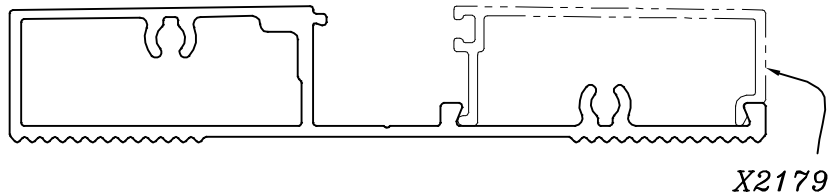
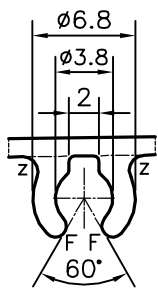
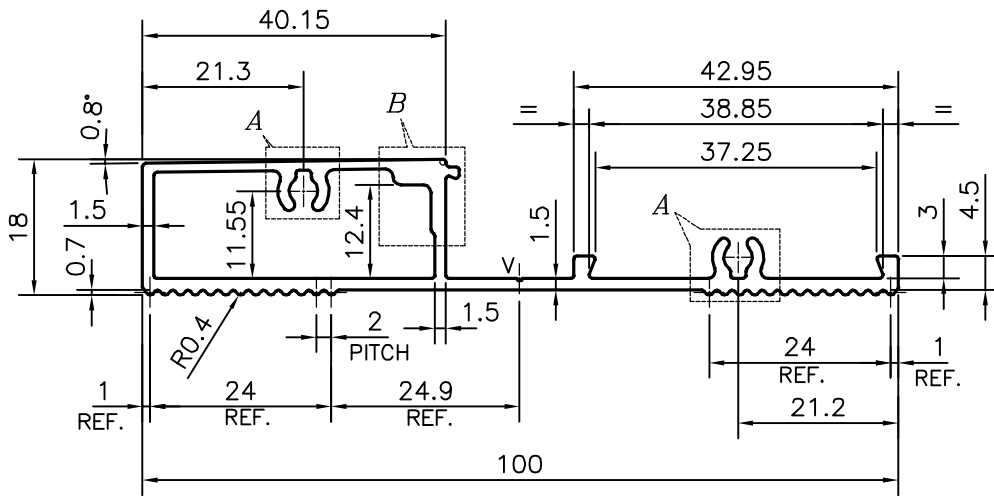


P-17079

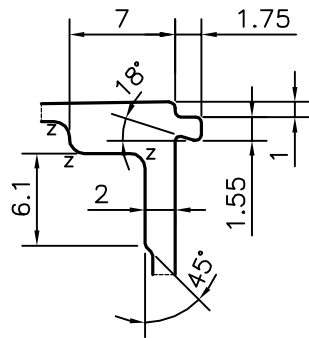
X2178



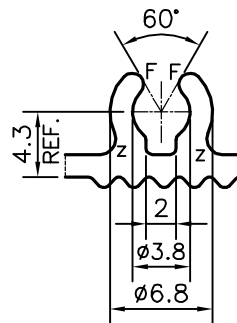
X2179



DETAIL OF "A"
SCALE 2:1



DETAIL OF "B"
SCALE 2:1



DETAIL OF "C"
SCALE 2:1

V = VEE GROOVE 0.3x90° (1 PLACE)
F = FULL RADIUS (4 PLACES)
Z = RADIUS 1 mm. (7 PLACES)

TOLERANCES ON OVERALL WIDTHS & WIDTHS ACROSS FLATS OF BARS, & REGULAR SECTIONS

UPTO 6.40mm - ±0.20	UPTO 32.0mm - ±0.38	UPTO 120.0mm - ±0.85	1. STRAIGHTNESS=1.7mm/M 2. TWIST=1.7mm/M 3. ANGULARITY= ±2° 4. FLATNESS =0.007xWIDTH
UPTO 10.0mm - ±0.23	UPTO 50.0mm - ±0.46	UPTO 160.0mm - ±1.02	
UPTO 12.0mm - ±0.25	UPTO 60.0mm - ±0.53	UPTO 200.0mm - ±1.14	
UPTO 16.0mm - ±0.28	UPTO 80.0mm - ±0.69	UPTO 250.0mm - ±1.40	
UPTO 25.0mm - ±0.30	UPTO 100.0mm - ±0.75	UPTO 300.0mm - ±1.65	



SYMBOL OF QUALITY
AN ISO 9001 COMPANY

JINDAL ALUMINIUM LTD.
BANGALORE-560073 (INDIA)

	NAME	DATE
DRAWN	PARVESH	08-05-2017
CHECKED		
APPROVED	B.NATARAJA	16-05-2017

- ALL DIMENSIONS ARE IN mm.
- ROUND OFF ALL SHARP CORNERS WITH 0.40 mm.
- TOLERANCES WILL BE AS PER IS:6477-1983 , UNLESS OTHERWISE SPECIFIED

SCALE	1:1
AREA mm ²	328.211
PERIMETER mm.	282.66
WEIGHT kg/m	0.886

PARTY'S NAME	TEAM WORK GLASS SOLUTIONS PVT LTD., HYDERABAD
PARTY'S DRAWING No.	WL-05
ALLOY & TEMPER	6063 T6
DESCRIPTION	ARCHITECTURAL SECTION-HORIZONTAL WALL PROFILE

DRAWING No.	SECTION No.
P-17079	-
X2178	X2178