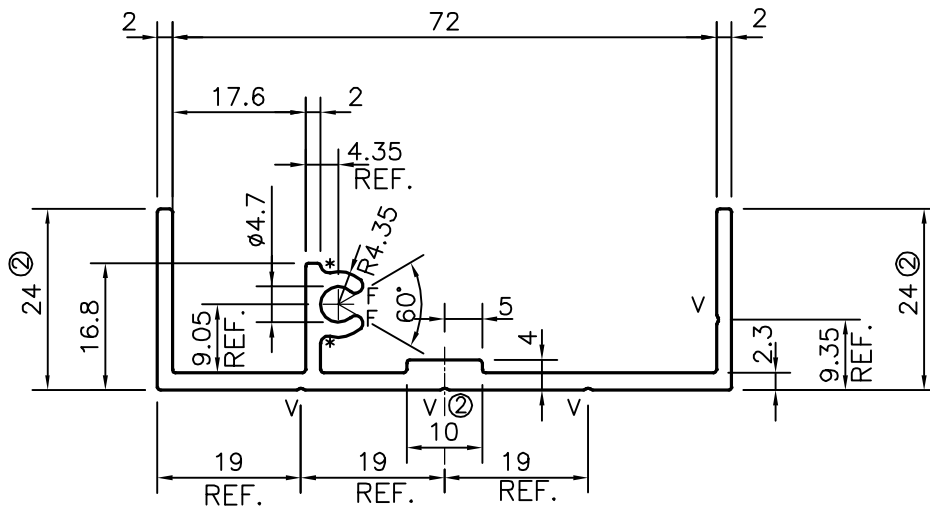
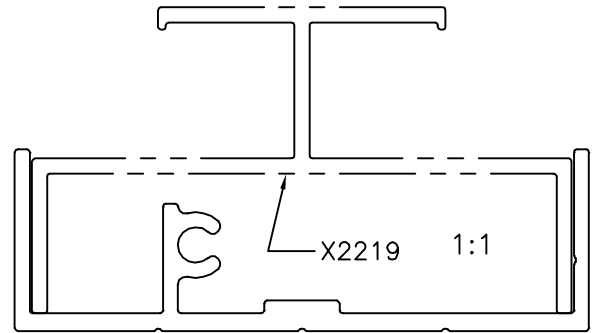


P-17119

X2182



ISSUE-2

DIMENSION CHANGED FROM 20.8 mm TO 24.0 mm & ONE STEP ADDED

WEIGHT ALSO CHANGED FROM 0.815 TO 0.895 kg/m

TOLERANCE CHART CD = CIRCUMSCRIBING CIRCLE

CD ≤ 100	100 < CD ≤ 200	200 < CD < 300	300 < CD < 500
UPTO 10mm - ±0.25	±0.30	±0.35	±0.40
10.0 - 25.0 - ±0.30	±0.40	±0.50	±0.60
25.0 - 50.0 - ±0.50	±0.60	±0.80	±0.90
50.0 - 100.0 - ±0.70	±0.90	±1.10	±1.30
100 - 150 - -	±1.10	±1.30	±1.50
150 - 200 - -	±1.3	±1.50	±1.80
200 - 300 - -	-	±1.70	±2.10
300 - 450 - -	-	-	±2.80

\* = 1.0 RADIUS (2 PLACES)  
V = V GROOVE 0.3x90° (4 PLACES)  
F = FULL RADIUS (2 PLACES)



SYMBOL OF QUALITY  
AN ISO 9001 COMPANY

**JINDAL ALUMINIUM LTD.**  
BANGALORE-560073 (INDIA)

	NAME	DATE
DRAWN	J.P.KAUSHIK	09-12-2017
CHECKED		
APPROVED	B.NATARAJA	13-03-2020
SCALE		1:1
AREA mm <sup>2</sup>		331.587
PERIMETER mm.		293.009
WEIGHT kg/m		0.895
DRAWING No.	SECTION No.	
P-17119	-	
X2182	X2182(ISSUE-2)	

- ALL DIMENSIONS ARE IN mm.
- ROUND OFF ALL SHARP CORNERS WITH 0.40 mm.
- TOLERANCES WILL BE AS PER BS:EN-755-9 UNLESS OTHERWISE SPECIFIED

PARTY'S NAME	PROSOURCE INDL. SOLUTIONS INC., CANADA
PARTY'S DRAWING No.	AS PER DRAWING-MODEL 3216A CENTER RAIL
ALLOY & TEMPER	6063 T5
DESCRIPTION	MISC. SECTION