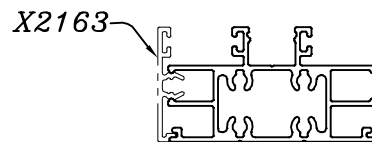
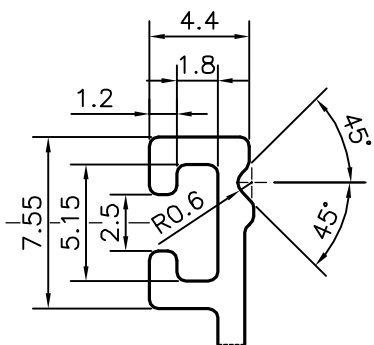
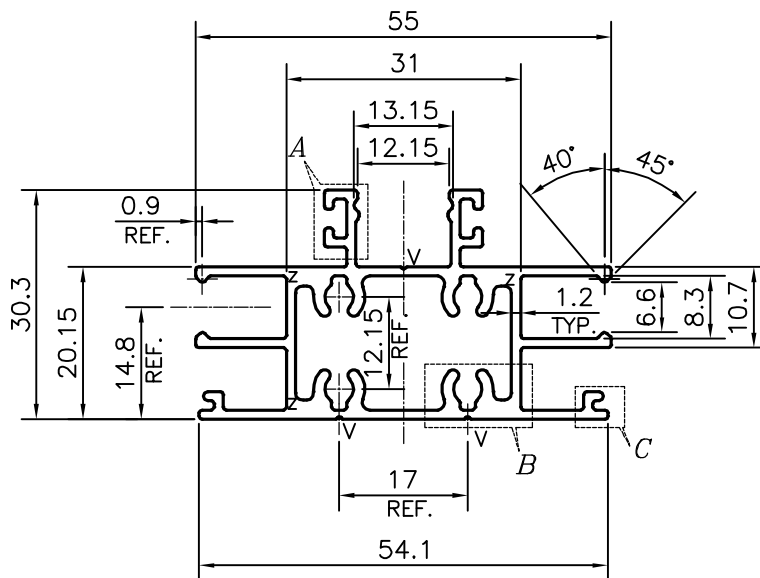


P-17273

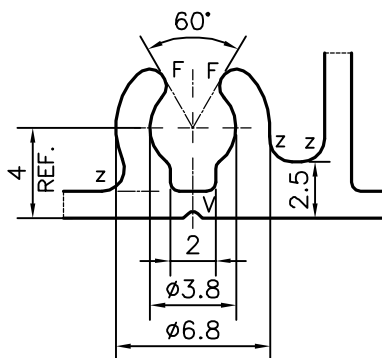
X2192



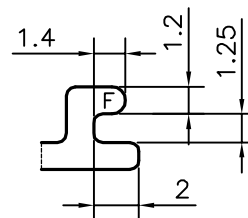
SCALE :- 0.5:1



DETAIL OF "A"  
SCALE 3:1



DETAIL OF "B"  
SCALE 3:1



DETAIL OF "C"  
SCALE 3:1

V = VEE GROOVE 0.3x45° (3 PLACES)  
 F = FULL RADIUS (10 PLACES)  
 Z = RADIUS 1 mm. (12 PLACES)

TOLERANCES ON OVERALL WIDTHS & WIDTHS ACROSS FLATS OF BARS, & REGULAR SECTIONS

UPTO 6.40mm - ±0.20	UPTO 32.0mm - ±0.38	UPTO 120.0mm - ±0.85	1. STRAIGHTNESS=1.7mm/M 2. TWIST=1.7mm/M 3. ANGULARITY= ±2° 4. FLATNESS =0.007xWIDTH
UPTO 10.0mm - ±0.23	UPTO 50.0mm - ±0.46	UPTO 160.0mm - ±1.02	
UPTO 12.0mm - ±0.25	UPTO 60.0mm - ±0.53	UPTO 200.0mm - ±1.14	
UPTO 16.0mm - ±0.28	UPTO 80.0mm - ±0.69	UPTO 250.0mm - ±1.40	
UPTO 25.0mm - ±0.30	UPTO 100.0mm - ±0.75	UPTO 300.0mm - ±1.65	



SYMBOL OF QUALITY  
 AN ISO 9001 COMPANY

**JINDAL ALUMINIUM LTD.**  
 BANGALORE-560073 (INDIA)

	NAME	DATE
DRAWN	PARVESH	13-05-2017
CHECKED		
APPROVED	B.NATARAJA	16-06-2017
SCALE		1:1
AREA	mm <sup>2</sup>	350.051
PERIMETER	mm.	330.258
WEIGHT	kg/m	0.945
DRAWING No.		SECTION No.
P-17273		-
X2192		X2192

- ALL DIMENSIONS ARE IN mm.
- ROUND OFF ALL SHARP CORNERS WITH 0.40 mm.
- TOLERANCES WILL BE AS PER IS:6477-1983 , UNLESS OTHERWISE SPECIFIED

PARTY'S NAME	TEAM WORK GLASS SOLUTIONS PVT LTD., HYDERABAD
PARTY'S DRAWING No.	DG-06
ALLOY & TEMPER	6063 T6
DESCRIPTION	ARCHITECTURAL SECTION