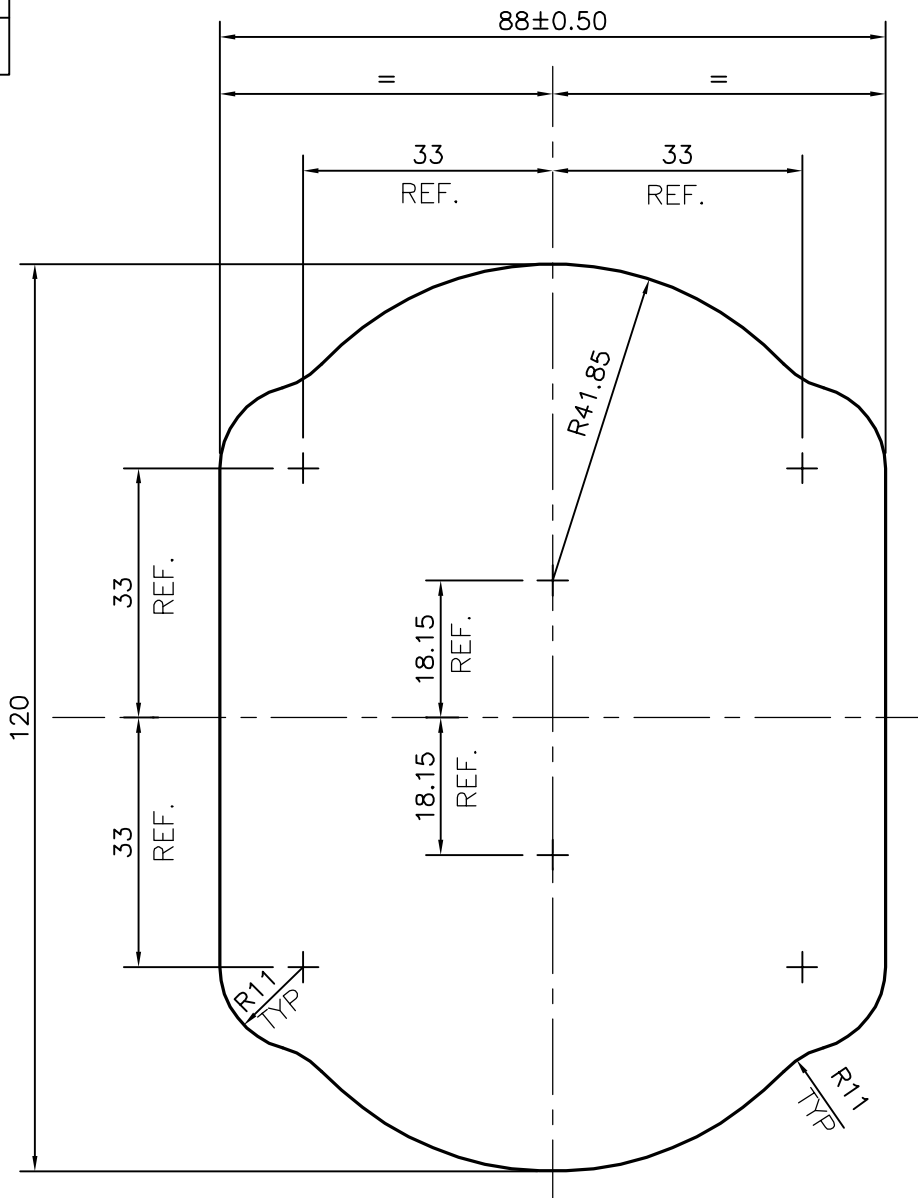


P-17210-1

X2220



TOLERANCE CHART CD = CIRCUMSCRIBING CIRCLE

	CD ≤ 100	100 < CD ≤ 200	200 < CD < 300	300 < CD < 500
UPTO 10mm - ±0.40	±0.50	±0.55	±0.60	
10.0 - 25.0 - ±0.50	±0.70	±0.80	±0.90	
25.0 - 50.0 - ±0.80	±0.90	±1.0	±1.20	
50.0 - 100.0 - ±1.0	±1.20	±1.30	±1.60	
100 - 150 - -	±1.50	±1.70	±1.80	
150 - 200 - -	±1.9	±2.20	±2.40	
200 - 300 - -	-	±2.50	±2.80	
300 - 450 - -	-	-	±3.50	

HARDNESS :- 89 BHN MIN.

1. STRAIGHTNESS=1.5mm/m
2. TWIST=1/4°/300mm(1.7mm/m)
2. TWIST=2°/3mtr(4.2mm/3mtr)



SYMBOL OF QUALITY
AN ISO 9001 COMPANY

JINDAL ALUMINIUM LTD.
BANGALORE-560073 (INDIA)

	NAME	DATE
DRAWN	J.P.KAUSHIK	24-06-2017
CHECKED		
APPROVED	B.NATARAJA	10-07-2017
SCALE		1:1
AREA mm ²		9114.671
PERIMETER mm.		351.518
WEIGHT kg/m		24.610
DRAWING No.	SECTION No.	
P-17210-1	-	
X2220	X2220	

1. ALL DIMENSIONS ARE IN mm.
2. ROUND OFF ALL SHARP CORNERS WITH 0.40 mm.
3. TOLERANCES WILL BE AS PER BS:EN-755-9 UNLESS OTHERWISE SPECIFIED

PARTY'S NAME	HEMA ENDUSTRI- TURKEY
PARTY'S DRAWING No.	15P100014
ALLOY & TEMPER	6082 T6
DESCRIPTION	PUMP BODY