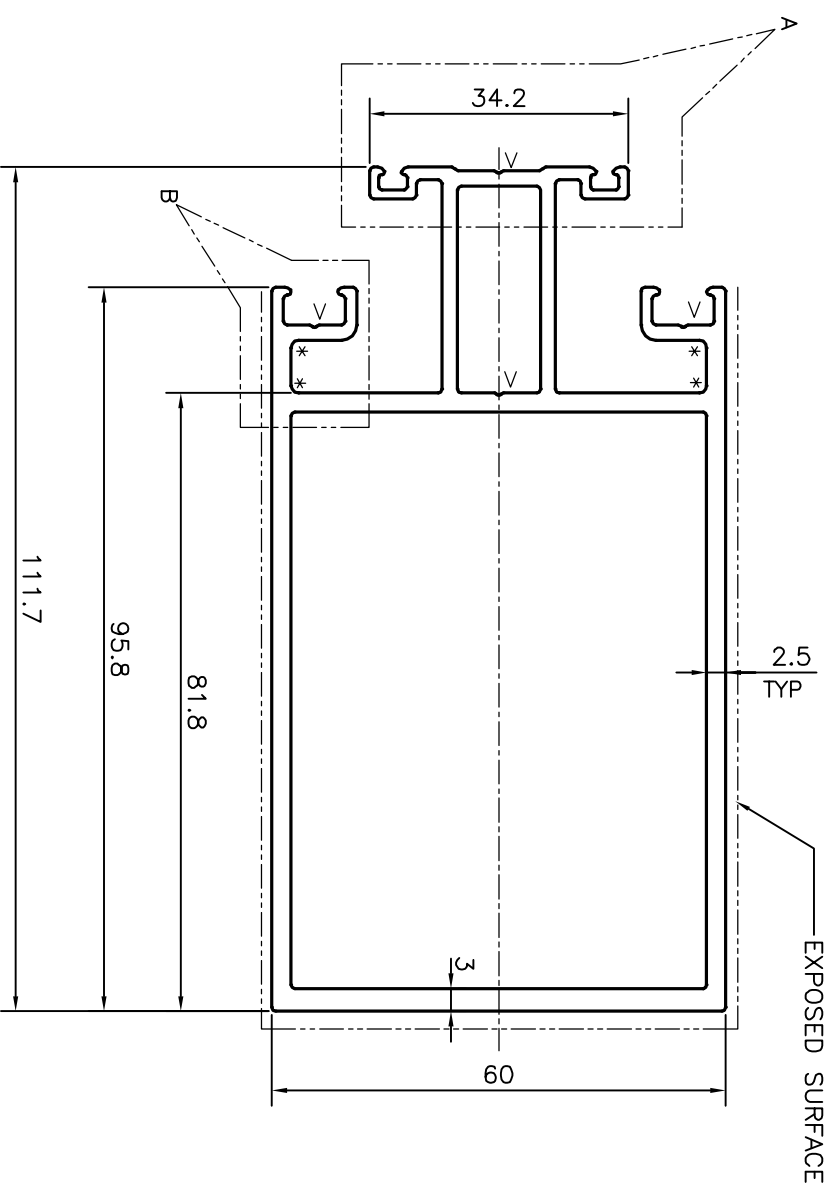
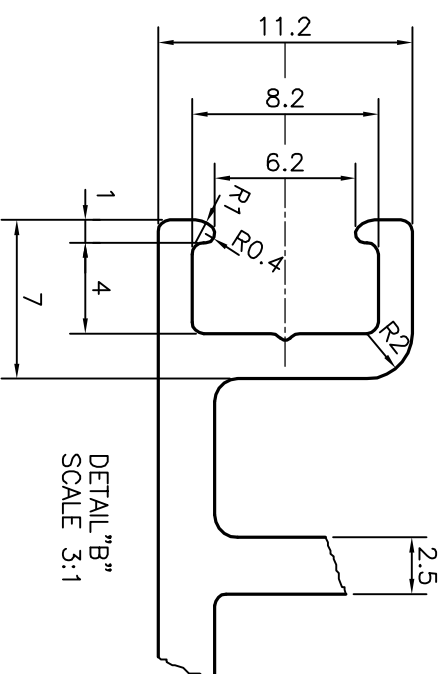
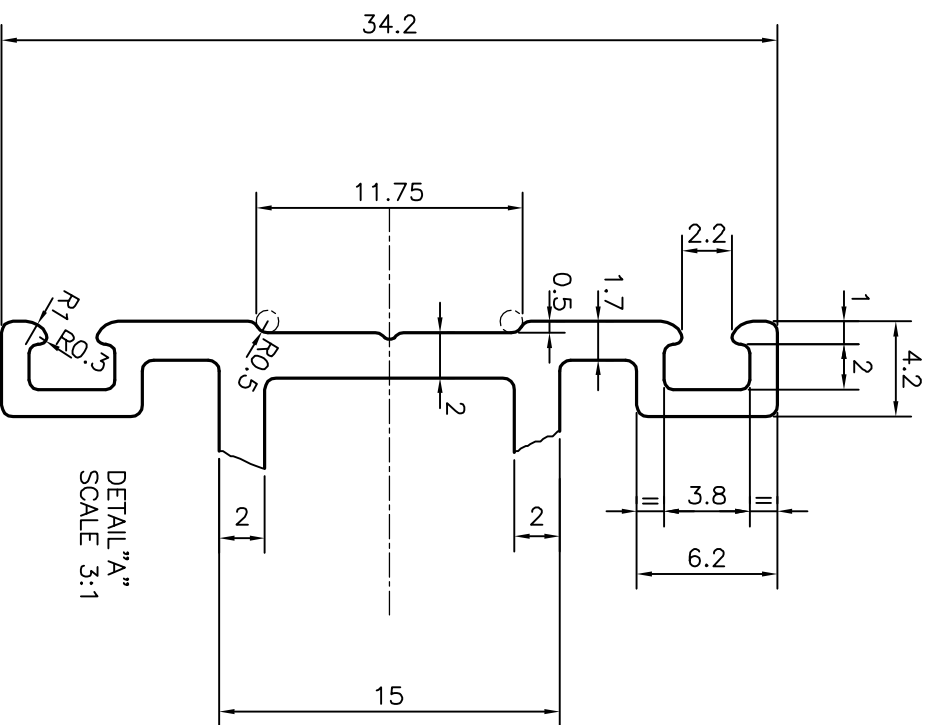


P-17291

X2226



\* = 1.0 RADIUS (4 PLACES)  
V = V GROOVE 0.3x90° (4 PLACES)

TOLERANCES ON OVERALL DIMENSIONS OF HOLLOW SECTIONS

UPTO 20.0mm - ±0.30	UPTO 80.0mm - ±0.70	UPTO 180.0mm - ±1.27
UPTO 30.0mm - ±0.38	UPTO 100.0mm - ±0.80	UPTO 200.0mm - ±1.40
UPTO 40.0mm - ±0.45	UPTO 120.0mm - ±0.90	UPTO 225.0mm - ±1.52
UPTO 50.0mm - ±0.52	UPTO 140.0mm - ±1.00	
UPTO 60.0mm - ±0.60	UPTO 160.0mm - ±1.14	

1. STRAIGHTNESS=1.7mm/M
2. TWIST=1.7mm/M
3. ANGULARITY= ±2°
4. FLATNESS =0.006xWIDTH

<p>SYMBOL OF QUALITY AN ISO 9001 COMPANY</p>		<p><b>JINDAL ALUMINIUM LTD.</b> BANGALORE-560073 (INDIA)</p>	
<p>1. ALL DIMENSIONS ARE IN mm. 2. ROUND OFF ALL SHARP CORNERS WITH 0.50 mm. 3. TOLERANCES WILL BE AS PER IS:6477-1983 UNLESS OTHERWISE SPECIFIED</p>		<p>SCALE 1:1 AREA mm<sup>2</sup> 1008.558 PERIMETER mm. 515.569 WEIGHT kg/m 2.723</p>	
PARTY'S NAME	TEAM WORK GLASS SOLUTION PVT. LTD., BANGALORE	DRAWING No.	SECTION No.
PARTY'S DRAWING No.	AS PER DRAWING-TWS 2017 011	P-17291	-
ALLOY & TEMPER	6063 T6	X2226	X2226
DESCRIPTION	MULLION SECTION		