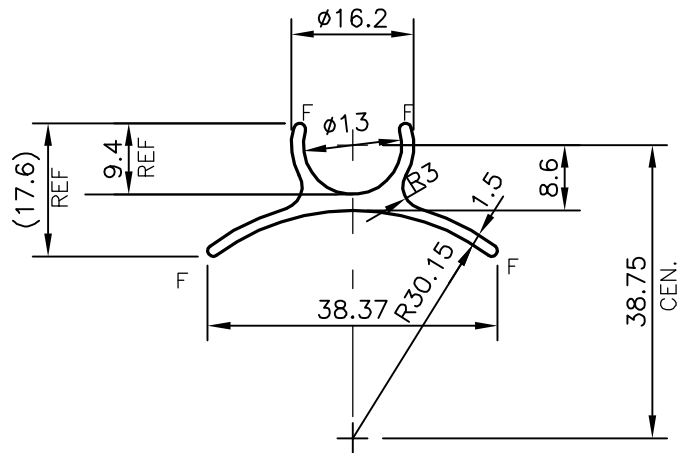


P-17353

X2241



TOLERANCE CHART CD = CIRCUMSCRIBING CIRCLE

CD ≤ 100	100 < CD ≤ 200	200 < CD < 300	300 < CD < 500
UPTO 10mm - ±0.25	±0.30	±0.35	±0.40
10.0 - 25.0 - ±0.30	±0.40	±0.50	±0.60
25.0 - 50.0 - ±0.50	±0.60	±0.80	±0.90
50.0 - 100.0 - ±0.70	±0.90	±1.10	±1.30
100 - 150 - -	±1.10	±1.30	±1.50
150 - 200 - -	±1.3	±1.50	±1.80
200 - 300 - -	-	±1.70	±2.10
300 - 450 - -	-	-	±2.80

F = FULL RADIUS (4 PLACES)



SYMBOL OF QUALITY
AN ISO 9001 COMPANY

JINDAL ALUMINIUM LTD.
BANGALORE-560073 (INDIA)

- ALL DIMENSIONS ARE IN mm.
- ROUND OFF ALL SHARP CORNERS WITH 0.40 mm.
- TOLERANCES WILL BE AS PER BS:EN-755-9 UNLESS OTHERWISE SPECIFIED

		NAME	DATE
PARTY'S NAME		DRAWN J.P.KAUSHIK	22-07-2017
PARTY'S DRAWING No.		CHECKED	
ALLOY & TEMPER		APPROVED B.NATARAJA	19-08-2017
DESCRIPTION		SCALE	1:1
		AREA mm ²	112.353
		PERIMETER mm.	118.979
		WEIGHT kg/m	0.303
		DRAWING No.	SECTION No.
		P-17353	-
		X2241	X2241