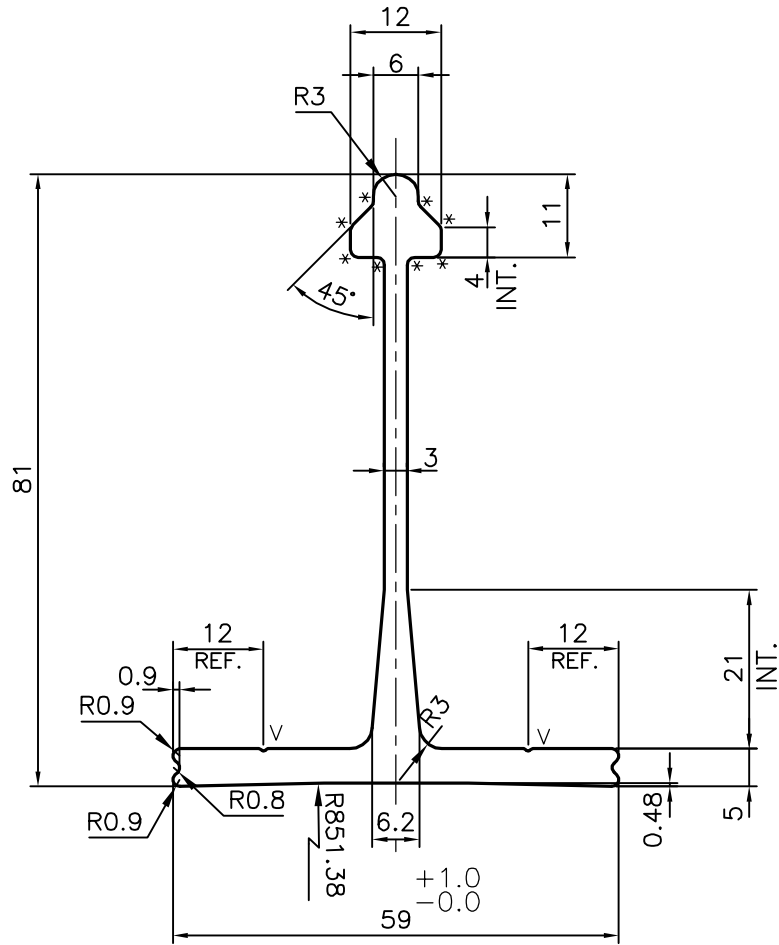


P-17432-1

X2247



V = V GROOVE 0.3x90°(2 PLACES)
 * = 1.0 RADIUS(8 PLACES)

TOLERANCES ON OVERALL WIDTHS & WIDTHS ACROSS FLATS OF BARS, & REGULAR SECTIONS

UPTO 6.40mm - ±0.20	UPTO 32.0mm - ±0.38	UPTO 120.0mm - ±0.85	UPTO 320.00mm - ±1.70
UPTO 10.0mm - ±0.23	UPTO 50.0mm - ±0.46	UPTO 160.0mm - ±1.02	
UPTO 12.0mm - ±0.25	UPTO 60.0mm - ±0.53	UPTO 200.0mm - ±1.14	
UPTO 16.0mm - ±0.28	UPTO 80.0mm - ±0.69	UPTO 250.0mm - ±1.40	
UPTO 25.0mm - ±0.30	UPTO 100.0mm - ±0.75	UPTO 300.0mm - ±1.65	



SYMBOL OF QUALITY
AN ISO 9001 COMPANY

JINDAL ALUMINIUM LTD.
 BANGALORE-560073 (INDIA)

	NAME	DATE
DRAWN	J.P.KAUSHIK	08-09-2017
CHECKED		
APPROVED	B.NATARAJA	15-09-2017
SCALE		1:1
AREA mm ²		605.042
PERIMETER mm.		284.433
WEIGHT kg/m		1.634
DRAWING No.	SECTION No.	
P-17432-1	-	
X2247	X2247	

1. ALL DIMENSIONS ARE IN mm.
2. ROUND OFF ALL SHARP CORNERS WITH 0.40 mm.
3. TOLERANCES WILL BE AS PER,IS:3965-1981 UNLESS OTHERWISE SPECIFIED

PARTY'S NAME	KALZIP INDIA PVT. LTD., GURGAON
PARTY'S DRAWING No.	KZ-0-COMP-IND-1-002 REV A
ALLOY & TEMPER	6061 T6
DESCRIPTION	ST. CLIP EXTRUSION TYPE L25