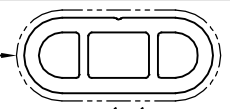


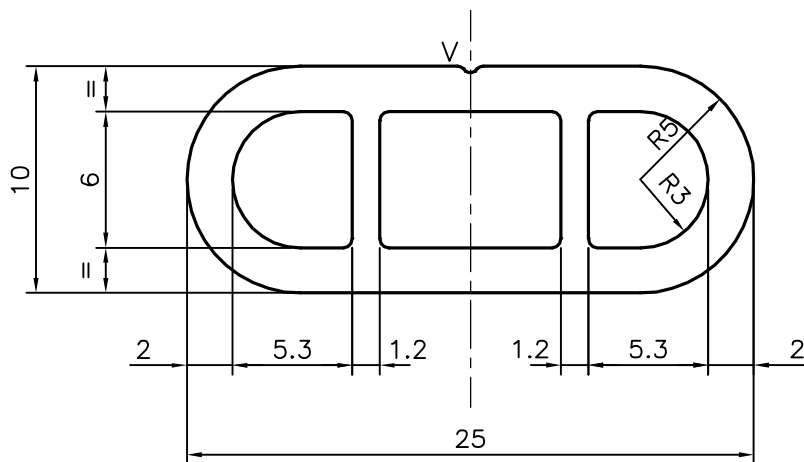
P-17672

X2284

EXPOSED SURFACE



1:1



V = V GROOVE 0.3x90° (ONE PLACE)



SYMBOL OF QUALITY  
AN ISO 9001 COMPANY

**JINDAL ALUMINIUM LTD.**  
BANGALORE-560073 (INDIA)

	NAME	DATE
DRAWN	J.P.KAUSHIK	25-11-2017
CHECKED		
APPROVED	B.NATARAJA	01-12-2017
SCALE		3:1
AREA mm <sup>2</sup>		124.773
PERIMETER mm.		61.604
WEIGHT kg/m		0.337
DRAWING No.	SECTION No.	
P-17672	-	
X2284	X2284	

1. ALL DIMENSIONS ARE IN mm.
2. ROUND OFF ALL SHARP CORNERS WITH 0.40 mm.
3. TOLERANCES WILL BE AS PER BS:EN-755-9 UNLESS OTHERWISE SPECIFIED

PARTY'S NAME NATIONAL DAIRY EQUIPMENTS (NDE),  
SOUTH AFRICA

PARTY'S DRAWING No. 55879

ALLOY & TEMPER 6063 T6

DESCRIPTION MISC. TUBE SECTION