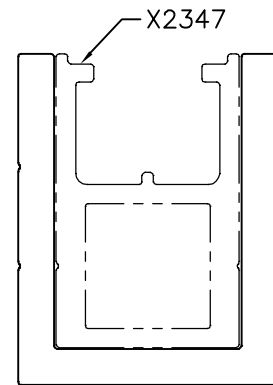
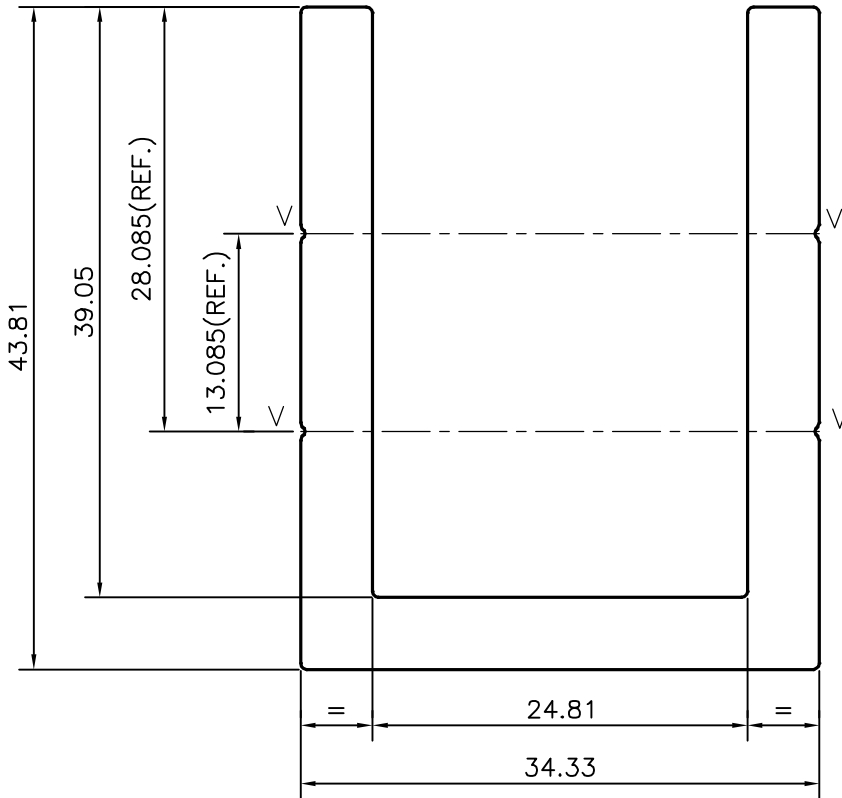
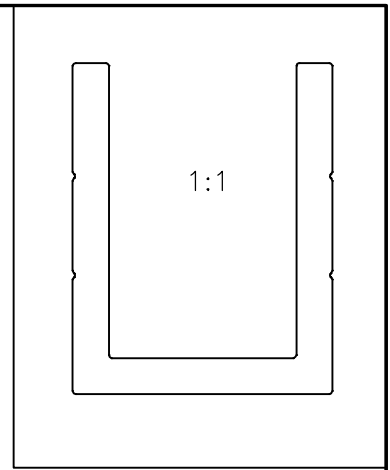



P-18267
X2345



TOLERANCE CHART CD = CIRCUMSCRIBING CIRCLE

CD ≤ 100	100 < CD ≤ 200	200 < CD < 300	300 < CD < 500
UPTO 10mm - ±0.25	±0.30	±0.35	±0.40
10.0 - 25.0 - ±0.30	±0.40	±0.50	±0.60
25.0 - 50.0 - ±0.50	±0.60	±0.80	±0.90
50.0 - 100.0 - ±0.70	±0.90	±1.10	±1.30
100 - 150 - -	±1.10	±1.30	±1.50
150 - 200 - -	±1.3	±1.50	±1.80
200 - 300 - -	-	±1.70	±2.10
300 - 450 - -	-	-	±2.80

V = V GROOVE 0.3x90° (4 PLACES)

 SYMBOL OF QUALITY AN ISO 9001 COMPANY	JINDAL ALUMINIUM LTD. BANGALORE-560073 (INDIA)	NAME	DATE
		DRAWN	J.P.KAUSHIK
		CHECKED	
		APPROVED	B.NATARAJA 02-06-2018
1. ALL DIMENSIONS ARE IN mm. 2. ROUND OFF ALL SHARP CORNERS WITH 0.40 mm. 3. TOLERANCES WILL BE AS PER,BS:EN-755-9 UNLESS OTHERWISE SPECIFIED		SCALE	2:1
		AREA mm ²	534.359
		PERIMETER mm.	233.76
		WEIGHT kg/m	1.443
		DRAWING No.	SECTION No.
		P-18267	-
		X2345	X2345
PARTY'S NAME	PROSOURCE INDL. SOLUTIONS, CANADA		
PARTY'S DRAWING No.	AS PER DRAWING		
ALLOY & TEMPER	6063 T5		
DESCRIPTION	BOTTOM CHANNEL SUPPORT		