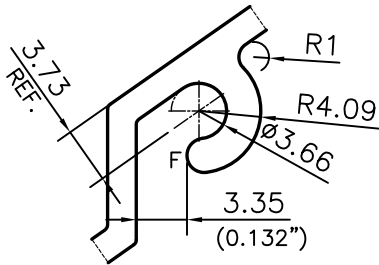
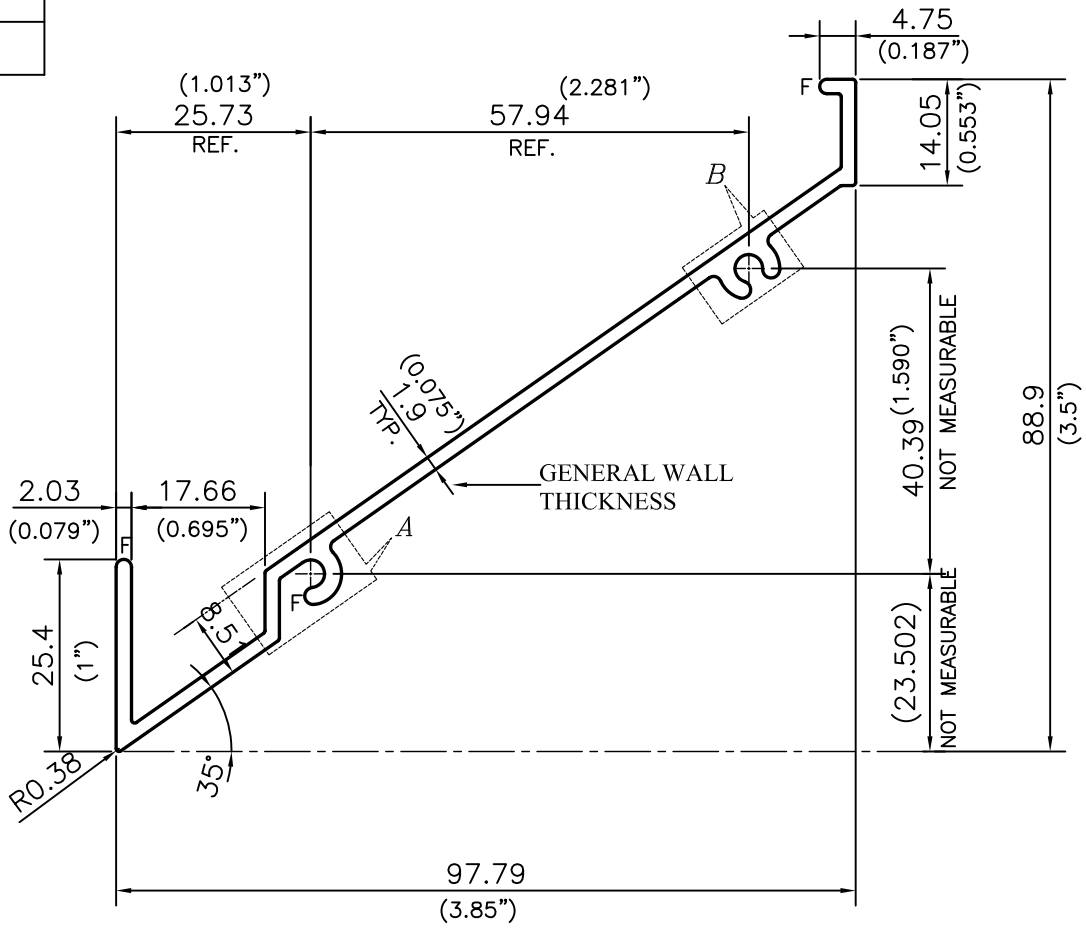
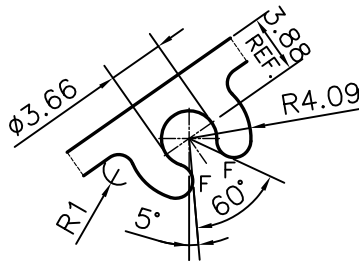


P-18288-3

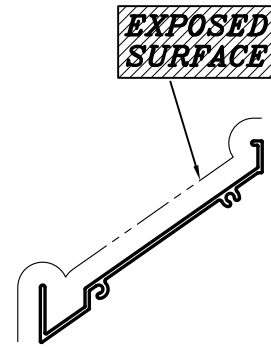
X2360



DETAIL OF "A"
SCALE 2:1



DETAIL OF "A"
SCALE 2:1



SCALE :- N.T.S.

TOLERANCE CHART CD = CIRCUMSCRIBING CIRCLE

DIMENSION	CD<100	100<CD<200	200<CD<300	300<CD<500
UPTO 10mm	±0.25	±0.30	±0.35	±0.40
10.0 -25.0	±0.30	±0.40	±0.50	±0.60
25.0 -50.0	±0.50	±0.60	±0.80	±0.90
50.0 -100	±0.70	±0.90	±1.10	±1.30
100 - 150	-	±1.10	±1.30	±1.50
150 - 200	-	±1.3	±1.50	±1.80
200 - 300	-	-	±1.70	±2.10
300 - 450	-	-	-	±2.80

F = FULL RADIUS (5 PLACES)



SYMBOL OF QUALITY
AN ISO 9001 COMPANY

JINDAL ALUMINIUM LTD.
BANGALORE-560073 (INDIA)

	NAME	DATE
DRAWN	PARVESH	04-07-2018
CHECKED		
APPROVED	B.NATARAJA	06-09-2018
SCALE		1:1
AREA mm ²		359.825
PERIMETER mm.		360.943
WEIGHT kg/m		0.972
DRAWING No.	SECTION No.	
P-18288-3	-	
X2360	X2360	

- ALL DIMENSIONS ARE IN mm.
- ROUND OFF ALL SHARP CORNERS WITH 0.4 mm.
- TOLERANCES WILL BE AS PER BS:EN-755-9 , UNLESS OTHERWISE SPECIFIED

PARTY'S NAME	VENTEX INC, CANADA
PARTY'S DRAWING No.	AS-38499-1
ALLOY & TEMPER	6063 T6
DESCRIPTION	DRAINABLE LOUVRE BLADE-4"