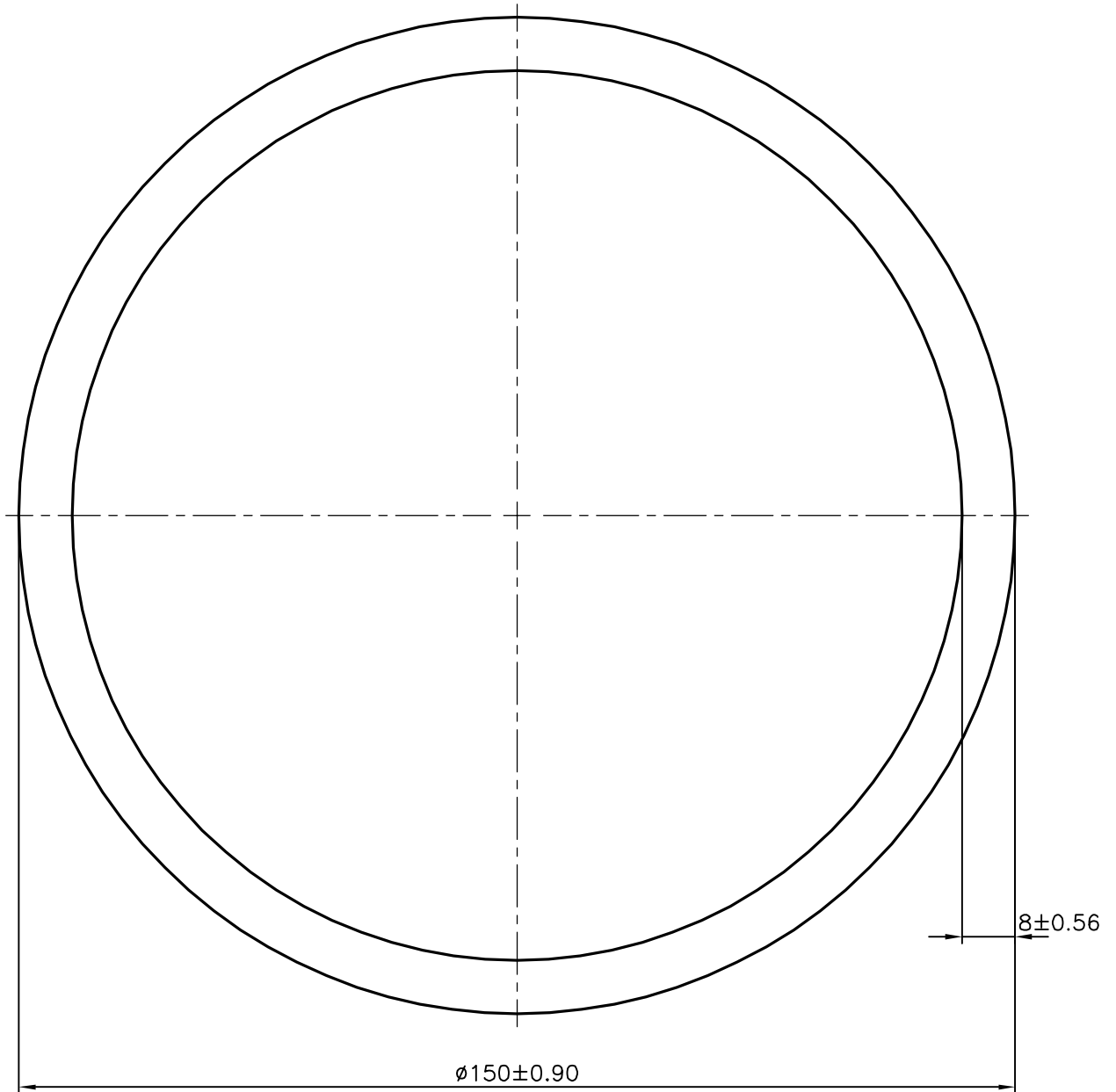


P-18045

X2368

STANDARDS:-EN573-3 FOR ALLOY
 STANDARDS:-EN755-2 FOR MECHANICAL PROPERTIES
 STANDARDS:-EN755-8 FOR TOLERANCE.



SYMBOL OF QUALITY
 AN ISO 9001 COMPANY

JINDAL ALUMINIUM LTD.
 BANGALORE-560073 (INDIA)

	NAME	DATE
DRAWN	J.P.KAUSHIK	26-03-2018
CHECKED		
APPROVED	B.NATARAJA	23-07-2018
SCALE		1:1
AREA mm ²		3568.849
PERIMETER mm.		471.239
WEIGHT kg/m		9.636
DRAWING No.	SECTION No.	
P-18045	-	
X2368	X2368	

1. ALL DIMENSIONS ARE IN mm.
2. ROUND OFF ALL SHARP CORNERS WITH 0.40 mm.
3. TOLERANCES WILL BE AS PER BS:EN-755-8 UNLESS OTHERWISE SPECIFIED

PARTY'S NAME	M/S NATIONAL CONTRACTING COMPANY, JORDAN
PARTY'S DRAWING No.	AS PER SPECIFICATION
ALLOY & TEMPER	6101 T6
DESCRIPTION	ROUND TUBE