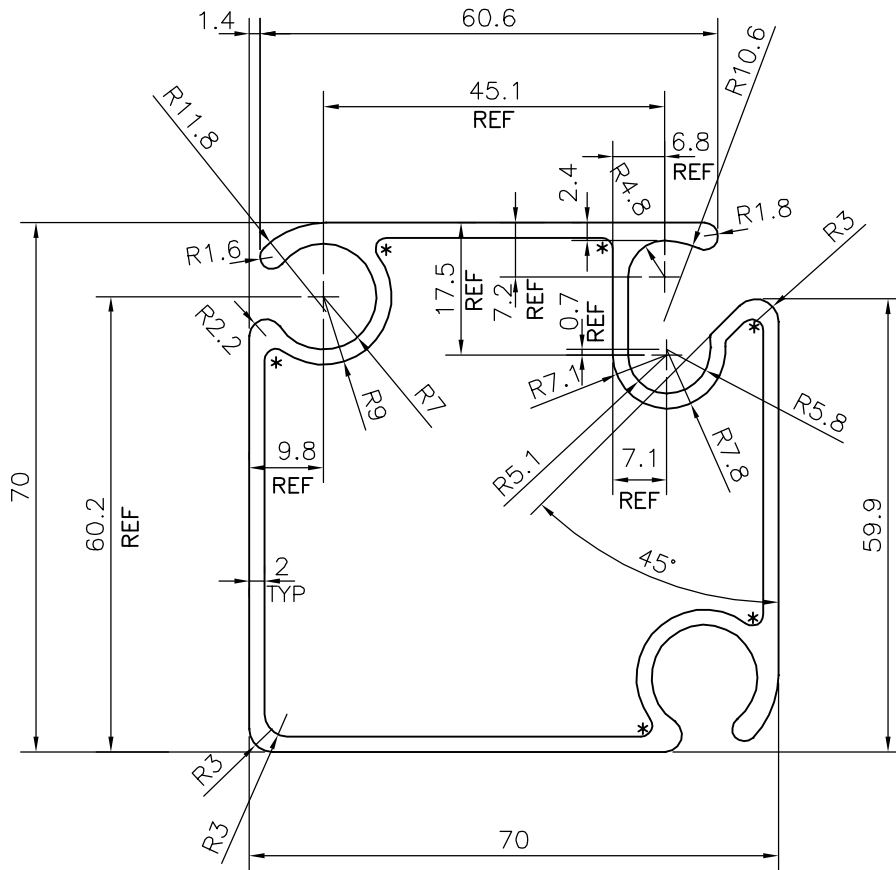


P-18661

X2399



* = 1.5 RADIUS(6 PLACES)

TOLERANCES ON OVERALL DIMENSIONS OF HOLLOW SECTIONS

UPTO 20.0mm - ±0.30	UPTO 80.0mm - ±0.70	UPTO 180.0mm - ±1.27	1. STRAIGHTNESS=1.7mm/M 2. TWIST=1.7mm/M 3. ANGULARITY= ±2° 4. FLATNESS =0.006xWIDTH
UPTO 30.0mm - ±0.38	UPTO 100.0mm - ±0.80	UPTO 200.0mm - ±1.40	
UPTO 40.0mm - ±0.45	UPTO 120.0mm - ±0.90	UPTO 225.0mm - ±1.52	
UPTO 50.0mm - ±0.52	UPTO 140.0mm - ±1.00		
UPTO 60.0mm - ±0.60	UPTO 160.0mm - ±1.14		



SYMBOL OF QUALITY
AN ISO 9001 COMPANY

JINDAL ALUMINIUM LTD.
BANGALORE-560073 (INDIA)

		NAME	DATE
DRAWN	J.P.KAUSHIK		10-09-2018
CHECKED			
APPROVED	B.NATARAJA		12-10-2018
SCALE		1:1	
AREA mm ²		723.352	
PERIMETER mm.		376.523	
WEIGHT kg/m		1.953	
DRAWING No.		SECTION No.	
P-18661		-	
X2399		X2399	

1. ALL DIMENSIONS ARE IN mm.
2. ROUND OFF ALL SHARP CORNERS WITH 0.40 mm.
3. TOLERANCES WILL BE AS PER IS:6477-1983 UNLESS OTHERWISE SPECIFIED

PARTY'S NAME	ALUMINIUM TRADING CO., DELHI
PARTY'S DRAWING No.	LIGHTER OF 27919
ALLOY & TEMPER	6063 T6
DESCRIPTION	MISC. SECTION