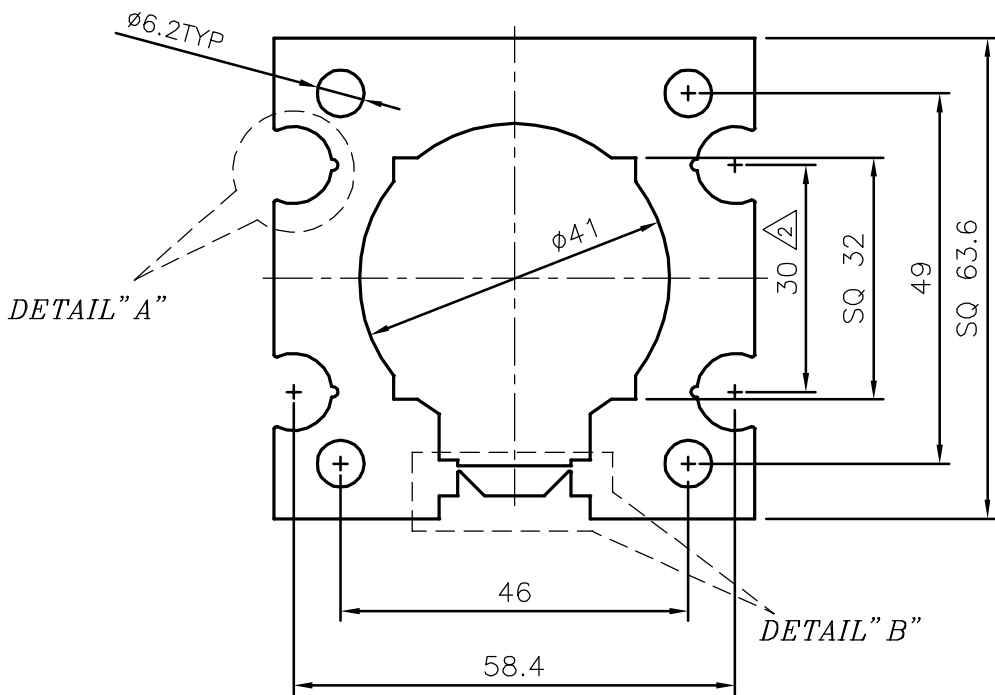
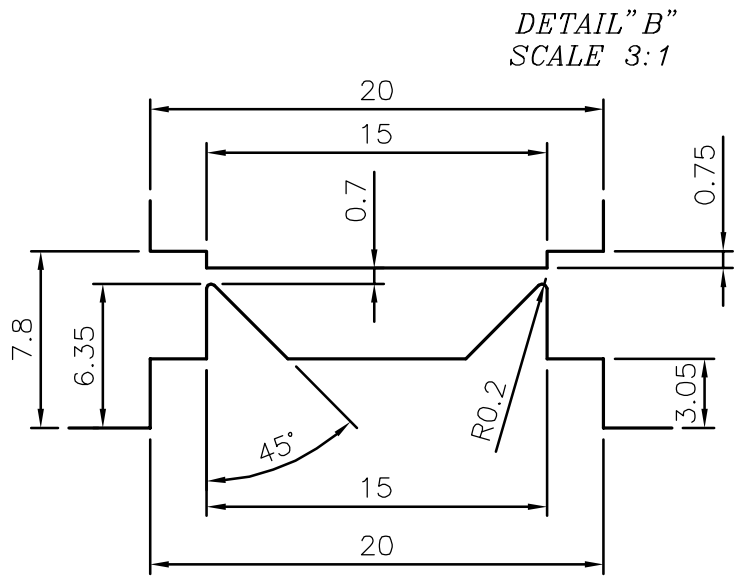
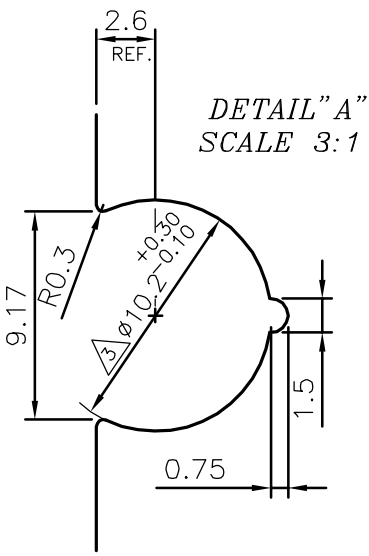


P-3699
S833
X240
77216
27540
X240



$\triangle 2$ DIMENSION CHANGED FROM 28.00 TO 30mm

ISSUE-3:- RADIUS 5.1 REMOVED, & DIMENSION & TOLERANCE $\phi 10.20_{-0.10}^{+0.30}$ ADDED. AS PER E MAIL DATED 15/09/16

	JINDAL ALUMINIUM LTD. BANGALORE-560073 (INDIA)	NAME	DATE
		DRAWN	J.P.KAUSHIK 16-09-2016
		CHECKED	
		APPROVED	B.NATARAJ 03-11-2016
1. ALL DIMENSIONS ARE IN mm. 2. ROUND OFF ALL SHARP CORNERS WITH 0.40 mm. 3. TOLERANCES WILL BE AS PER IS:6477-1983 UNLESS OTHERWISE SPECIFIED		SCALE	1:1
		AREA mm ²	2144.476
		PERIMETER mm.	321.286
		WEIGHT kg/m	5.790
PARTY'S NAME	OPTIMA ENGINEERING SYSTEMS., MUMBAI	DRAWING No.	SECTION No.
PARTY'S DRAWING No.	AS PER DRAWING (LFR 10 EXTRU)	P-3699	-
ALLOY & TEMPER	6063 T6	S833	S833-ISSUE-3
DESCRIPTION/END USE	HEAT SINK SECTION	X240	X240
		27540	27540
		X240	X240-ISSUE-3