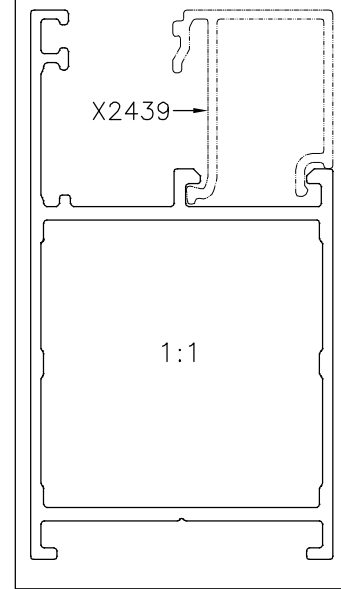
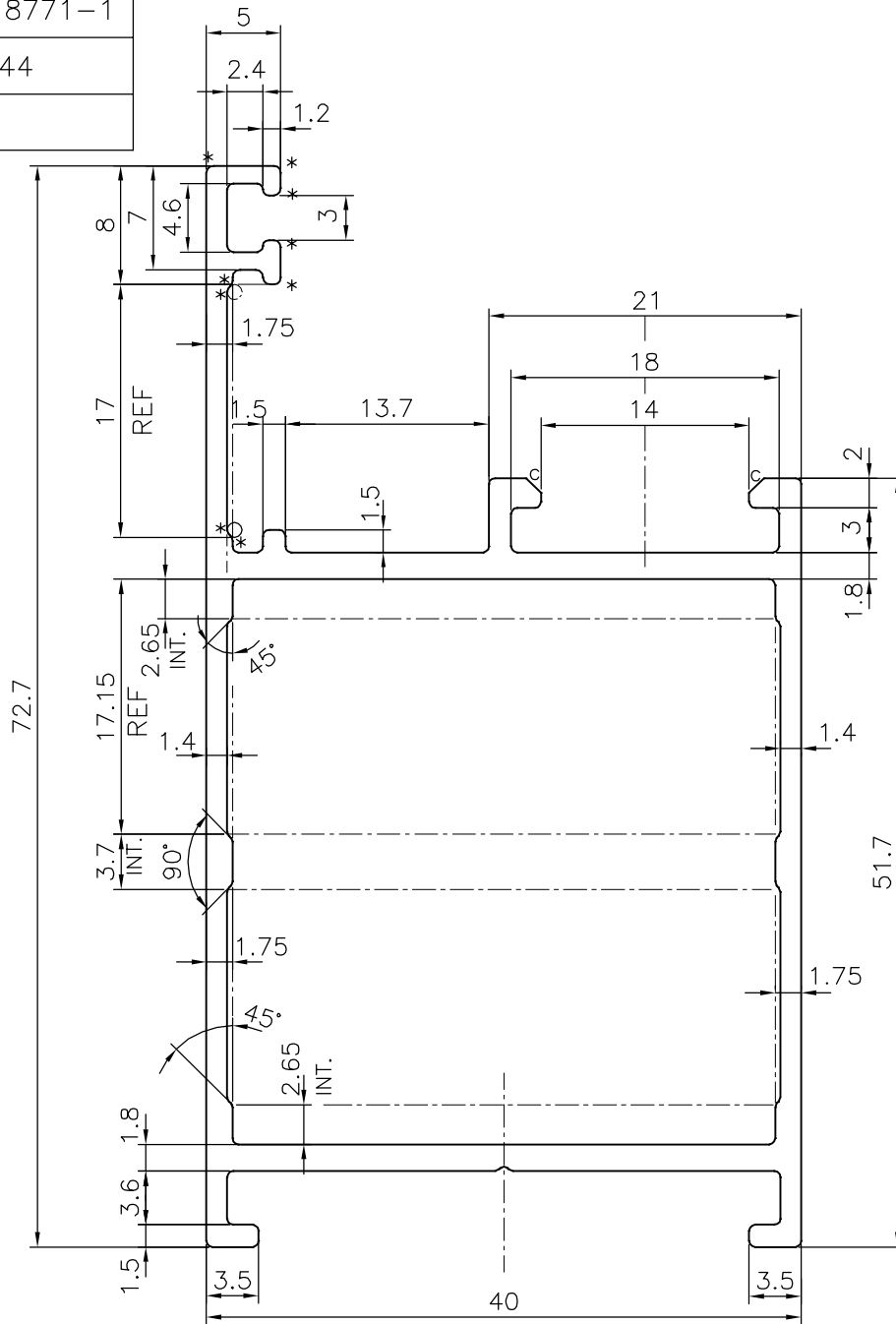


P-18771-1

X2444



c = CHAMFER 1.0x45° (2 PLACES)
 V = V GROOVE 0.3x90° (1 PLACE)
 * = 0.5 RADIUS (12 PLACES)



SYMBOL OF QUALITY
 AN ISO 9001 COMPANY

JINDAL ALUMINIUM LTD.
 BANGALORE-560073 (INDIA)

	NAME	DATE
DRAWN	J.P.KAUSHIK	30-11-2018
CHECKED		
APPROVED	B,NATARAJA	08-12-2018
SCALE		2:1
AREA mm ²		350.302
PERIMETER mm.		286.256
WEIGHT kg/m		0.946
DRAWING No.		SECTION No.
P-18771-1		-
X2444		X2444

1. ALL DIMENSIONS ARE IN mm.
2. ROUND OFF ALL SHARP CORNERS WITH 0.40 mm.
3. TOLERANCES WILL BE AS PER IS:6477-1983 , UNLESS OTHERWISE SPECIFIED

PARTY'S NAME	HEET ENTERPRISE, AHMEDABAD
PARTY'S DRAWING No.	HECA4008
ALLOY & TEMPER	6063 T6
DESCRIPTION	WINDOW SECTION