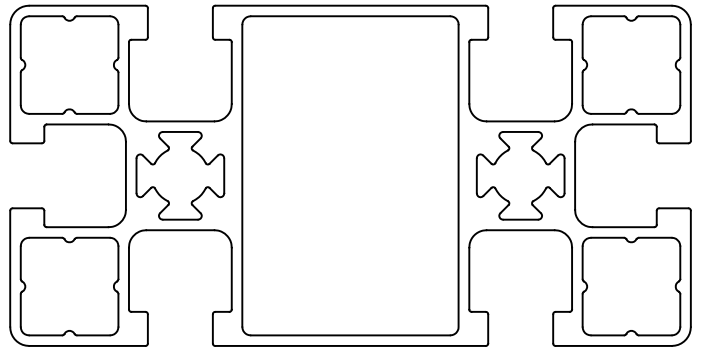
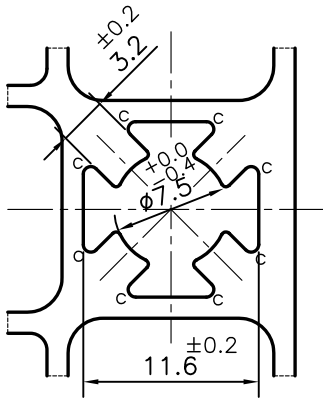
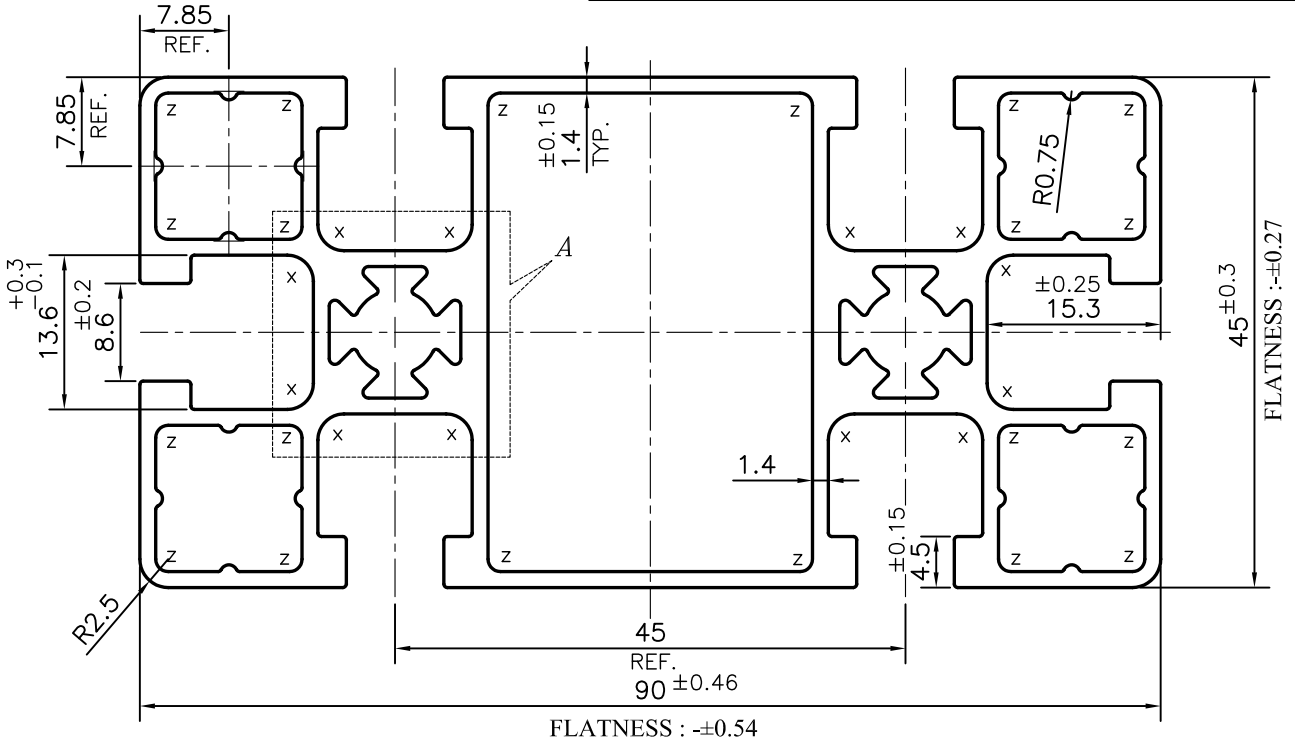


P-16004-2

X2600



SCALE: - 1:1



Z = RADIUS 1.1 mm. (20 PLACES)
 X = RADIUS 2.3 mm. (12 PLACES)
 C = RADIUS 0.5 mm. (16 PLACES)

UNSPECIFIED CORNERS RADIUS WILL BE 0.30 mm.



SYMBOL OF QUALITY
AN ISO 9001 COMPANY

JINDAL ALUMINIUM LTD.
BANGALORE-560073 (INDIA)

	NAME	DATE
DRAWN	PARVESH	31-07-2019
CHECKED		
APPROVED	B.NATARAJA	04-11-2019
SCALE		1.5:1
AREA	mm ²	919.612
PERIMETER	mm.	492.827
WEIGHT	kg/m	2.483
DRAWING No.	SECTION No.	
P-16004-2	-	
X2600	X2600	

1. ALL DIMENSIONS ARE IN mm.
2. ROUND OFF ALL SHARP CORNERS WITH 0.40 mm.
3. TOLERANCES WILL BE AS PER ANSI:H35.2-2009 , UNLESS OTHERWISE SPECIFIED

PARTY'S NAME	UNIVERSAL FABRICATING, CANADA
PARTY'S DRAWING No.	UH-33216 'A'
ALLOY & TEMPER	6063 T6
DESCRIPTION	DISPLAY SECTION