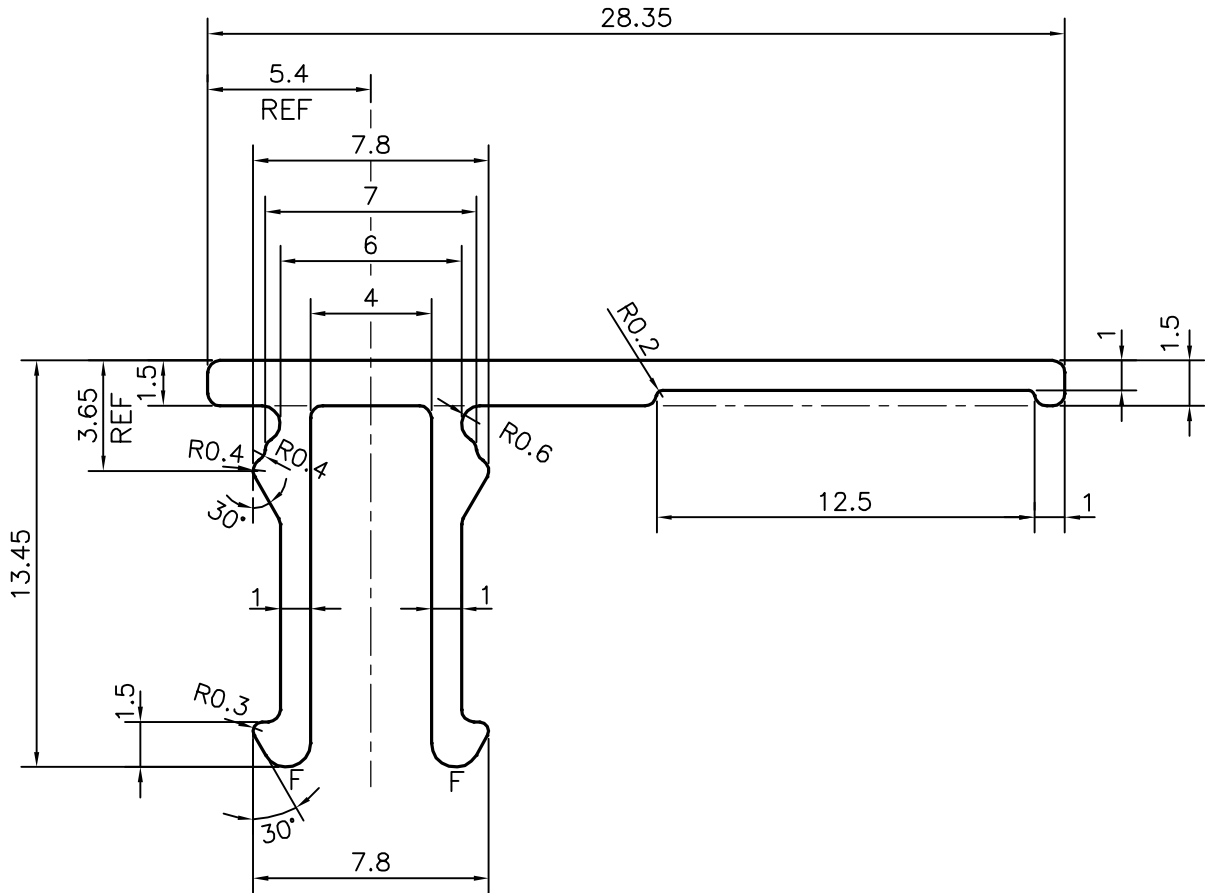
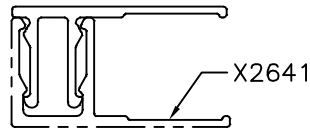
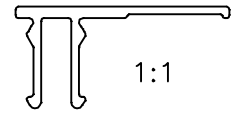


P-20754

X2642



TOLERANCE CHART CD = CIRCUMSCRIBING CIRCLE

|               | CD ≤ 100 | 100 < CD ≤ 200 | 200 < CD < 300 | 300 < CD < 500 |
|---------------|----------|----------------|----------------|----------------|
| UPTO 10mm -   | ±0.25    | ±0.30          | ±0.35          | ±0.40          |
| 10.0 -25.0 -  | ±0.30    | ±0.40          | ±0.50          | ±0.60          |
| 25.0 -50.0 -  | ±0.50    | ±0.60          | ±0.80          | ±0.90          |
| 50.0 -100.0 - | ±0.70    | ±0.90          | ±1.10          | ±1.30          |
| 100 - 150 -   | -        | ±1.10          | ±1.30          | ±1.50          |
| 150 - 200 -   | -        | ±1.3           | ±1.50          | ±1.80          |
| 200 - 300 -   | -        | -              | ±1.70          | ±2.10          |
| 300 - 450 -   | -        | -              | -              | ±2.80          |

F = FULL RADIUS (2 PLACES)



SYMBOL OF QUALITY  
AN ISO 9001 COMPANY

**JINDAL ALUMINIUM LTD.**  
BANGALORE-560073 (INDIA)

|                      | NAME        | DATE        |
|----------------------|-------------|-------------|
| DRAWN                | J.P.KAUSHIK | 15-02-2020  |
| CHECKED              |             |             |
| APPROVED             | B.NATARAJA  | 05-03-2020  |
| SCALE                |             | 4:1         |
| AREA mm <sup>2</sup> |             | 64.827      |
| PERIMETER mm.        |             | 108.798     |
| WEIGHT kg/m          |             | 0.175       |
| DRAWING No.          |             | SECTION No. |
| P-20754              |             | -           |
| X2642                |             | X2642       |
|                      |             |             |
|                      |             |             |

- ALL DIMENSIONS ARE IN mm.
- ROUND OFF ALL SHARP CORNERS WITH 0.40 mm.
- TOLERANCES WILL BE AS PER,ANSI:H35.2-2009 UNLESS OTHERWISE SPECIFIED

|                     |                        |
|---------------------|------------------------|
| PARTY'S NAME        | ALUMINIUM F/X , CANADA |
| PARTY'S DRAWING No. | AS PER DRAWING         |
| ALLOY & TEMPER      | 6063 T6                |
| DESCRIPTION         | MISC. SECTION          |