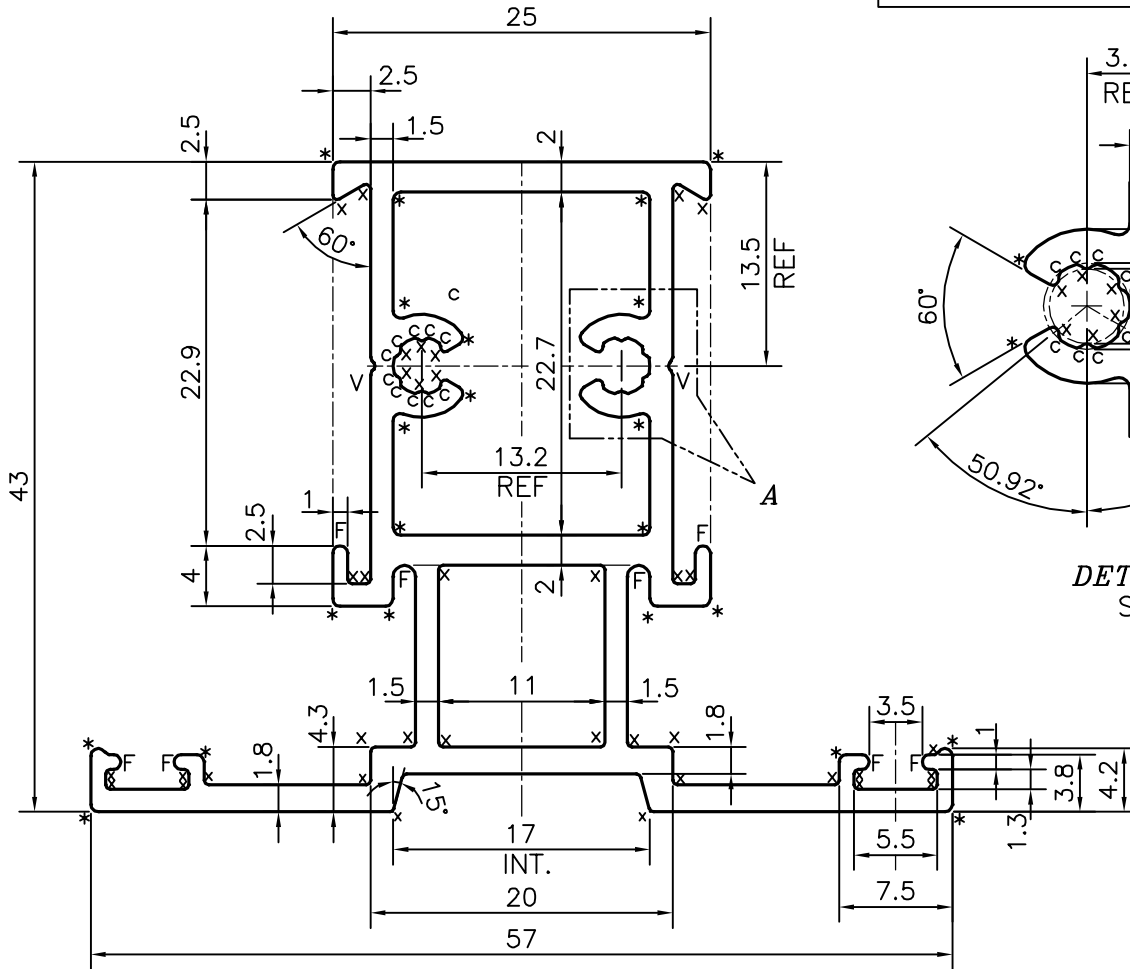
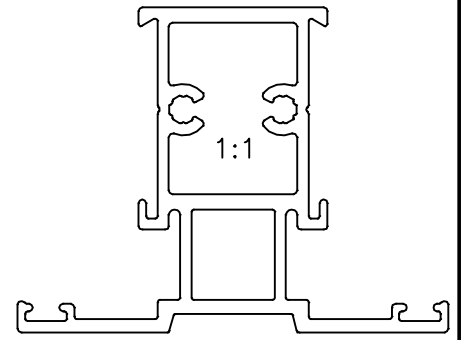


P-20940-2

X2651



DETAIL OF "A"  
SCALE 3:1

TOLERANCE CHART CD = CIRCUMSCRIBING CIRCLE

	CD ≤ 100	100 < CD ≤ 200	200 < CD ≤ 300	300 < CD ≤ 500
UPTO 10mm - ±0.25	±0.30	±0.35	±0.40	
10.0 - 25.0 - ±0.30	±0.40	±0.50	±0.60	
25.0 - 50.0 - ±0.50	±0.60	±0.80	±0.90	
50.0 - 100.0 - ±0.70	±0.90	±1.10	±1.30	
100 - 150 - -	±1.10	±1.30	±1.50	
150 - 200 - -	±1.3	±1.50	±1.80	
200 - 300 - -	-	±1.70	±2.10	
300 - 450 - -	-	-	±2.80	

- c = 0.20 RADIUS (32 PLACES)
- x = 0.30 RADIUS (44 PLACES)
- \* = 0.50 RADIUS (24 PLACES)
- V = V GROOVE 0.30x90° (2 PLACES)
- F = FULL RADIUS (8 PLACES)



SYMBOL OF QUALITY  
AN ISO 9001 COMPANY

**JINDAL ALUMINIUM LTD.**  
BANGALORE-560073 (INDIA)

	NAME	DATE
DRAWN	J.P.KAUSHIK	19-05-2020
CHECKED		
APPROVED	B.NATARAJA	25-05-2020
SCALE		2:1
AREA mm <sup>2</sup>		366.718
PERIMETER mm.		276.036
WEIGHT kg/m		0.990
DRAWING No.	SECTION No.	
P-20940-2	-	
X2651	X2651	

1. ALL DIMENSIONS ARE IN mm.
2. ROUND OFF ALL SHARP CORNERS WITH 0.40 mm.
3. TOLERANCES WILL BE AS PER BS:EN-755-9 , UNLESS OTHERWISE SPECIFIED

PARTY'S NAME	PERFECT GLAZE, UNITED KINGDOM
PARTY'S DRAWING No.	TW 09
ALLOY & TEMPER	6063 T6
DESCRIPTION	WINDOW SECTION