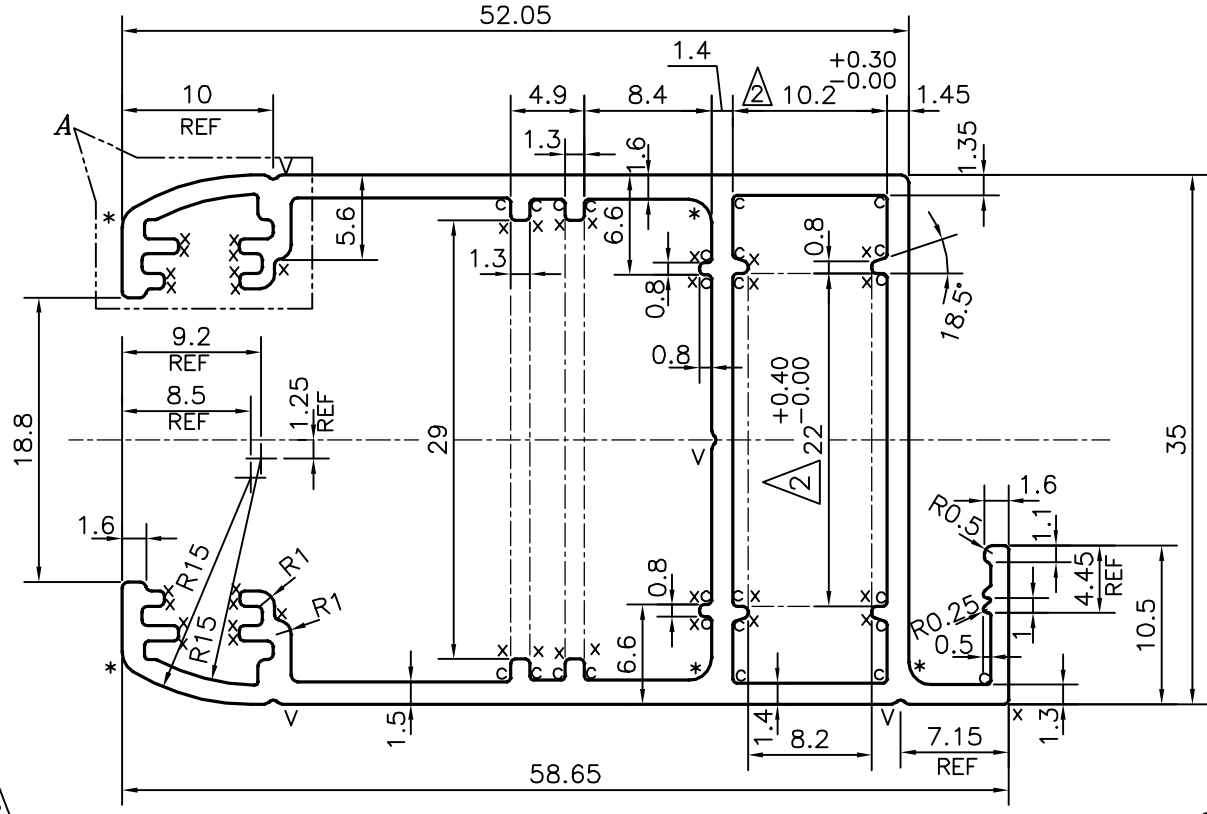
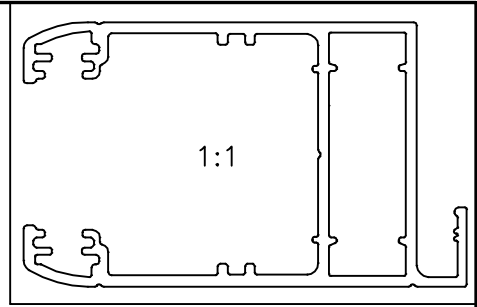
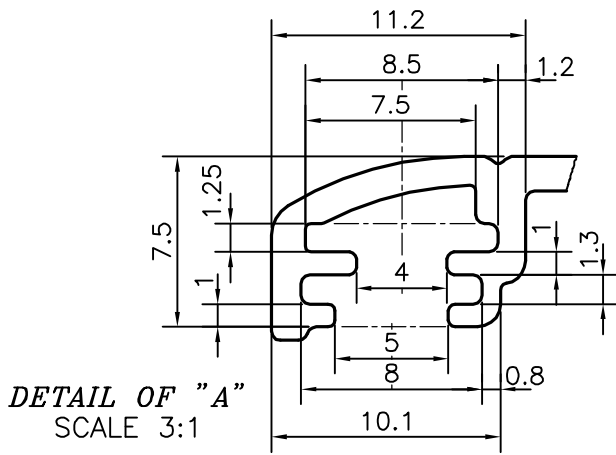


P-20944-1
X2660



ISSUE- \triangle 2

DIMENSION CHANGED FROM 21.8 mm TO 22 mm & TOLERANCE ADDED ON 22 $\begin{smallmatrix} +0.40 \\ -0.00 \end{smallmatrix}$ & 10.2 $\begin{smallmatrix} +0.30 \\ -0.00 \end{smallmatrix}$

TOLERANCE CHART CD = CIRCUMSCRIBING CIRCLE

CD ≤ 100	100 < CD ≤ 200	200 < CD < 300	300 < CD ≤ 500
UPTO 10mm - ±0.25	±0.30	±0.35	±0.40
10.0 - 25.0 - ±0.30	±0.40	±0.50	±0.60
25.0 - 50.0 - ±0.50	±0.60	±0.80	±0.90
50.0 - 100.0 - ±0.70	±0.90	±1.10	±1.30
100 - 150 - -	±1.10	±1.30	±1.50
150 - 200 - -	±1.3	±1.50	±1.80
200 - 300 - -	-	±1.70	±2.10
300 - 450 - -	-	-	±2.80

c = 0.25 RADIUS (25 PLACES)
x = 0.30 RADIUS (38 PLACES)
* = 1.5 RADIUS (5 PLACES)
V = V GROOVE 0.30x90° (4 PLACES)

	JINDAL ALUMINIUM LTD. BANGALORE-560073 (INDIA)	NAME	DATE
		DRAWN	J.P.KAUSHIK 29-07-2020
		CHECKED	
		APPROVED	B.NATARAJA 30-07-2020
1. ALL DIMENSIONS ARE IN mm. 2. ROUND OFF ALL SHARP CORNERS WITH 0.40 mm. 3. TOLERANCES WILL BE AS PER BS:EN-755-9 , UNLESS OTHERWISE SPECIFIED		SCALE	2:1
		AREA mm ²	322.288
		PERIMETER mm.	360.637
PARTY'S NAME	PERFECT GLAZE, UNITED KINGDOM	WEIGHT kg/m	0.870
PARTY'S DRAWING No.	M 60	DRAWING No.	SECTION No.
ALLOY & TEMPER	6063 T6	P-20944-1	-
DESCRIPTION	WINDOW SECTION	X2660	X2660(ISSUE-2)