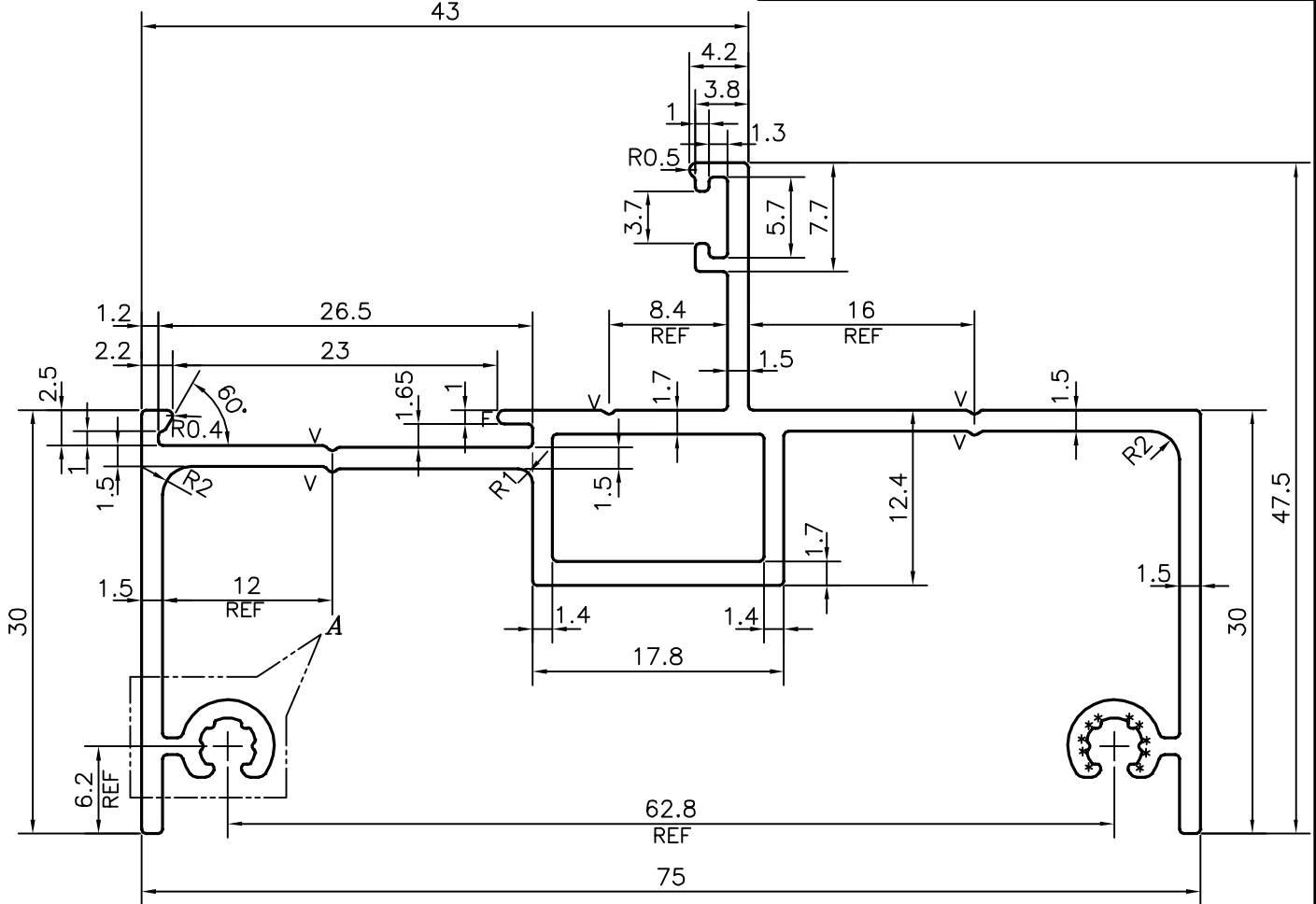
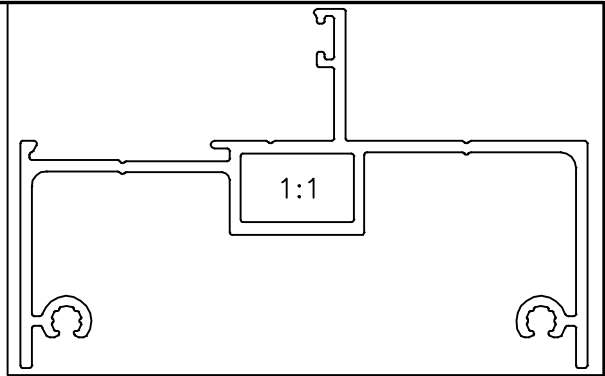
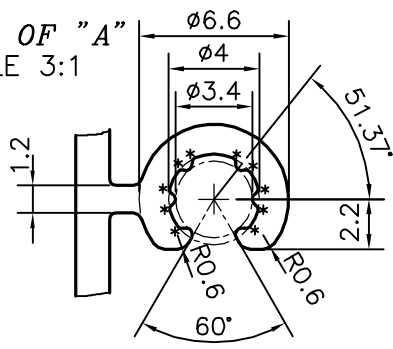


P-20953-1

X2668

**DETAIL OF "A"**  
SCALE 3:1



TOLERANCE CHART CD = CIRCUMSCRIBING CIRCLE

	CD ≤ 100	100 < CD ≤ 200	200 < CD ≤ 300	300 < CD ≤ 500
UPTO 10mm	±0.25	±0.30	±0.35	±0.40
10.0 - 25.0	±0.30	±0.40	±0.50	±0.60
25.0 - 50.0	±0.50	±0.60	±0.80	±0.90
50.0 - 100.0	±0.70	±0.90	±1.10	±1.30
100 - 150	-	±1.10	±1.30	±1.50
150 - 200	-	±1.3	±1.50	±1.80
200 - 300	-	-	±1.70	±2.10
300 - 450	-	-	-	±2.80

F = FULL RADIUS (1 PLACE)  
 \* = 0.20 RADIUS (20 PLACES)  
 UNSPECIFIED RADIUS 0.30 mm  
 V = V GROOVE 0.30x90° (5 PLACES)



SYMBOL OF QUALITY  
AN ISO 9001 COMPANY

**JINDAL ALUMINIUM LTD.**  
BANGALORE-560073 (INDIA)

	NAME	DATE
DRAWN	J.P.KAUSHIK	15-05-2020
CHECKED		
APPROVED	B.NATARAJA	26-05-2020
SCALE		2:1
AREA mm <sup>2</sup>		334.131
PERIMETER mm.		398.578
WEIGHT kg/m		0.902
DRAWING No.	SECTION No.	
P-20953-1	-	
X2668	X2668	

- ALL DIMENSIONS ARE IN mm.
- ROUND OFF ALL SHARP CORNERS WITH 0.40 mm.
- TOLERANCES WILL BE AS PER BS:EN-755-9, UNLESS OTHERWISE SPECIFIED

PARTY'S NAME	PERFECT GLAZE, UNITED KINGDOM
PARTY'S DRAWING No.	TSF 114
ALLOY & TEMPER	6063 T6
DESCRIPTION	WINDOW SECTION