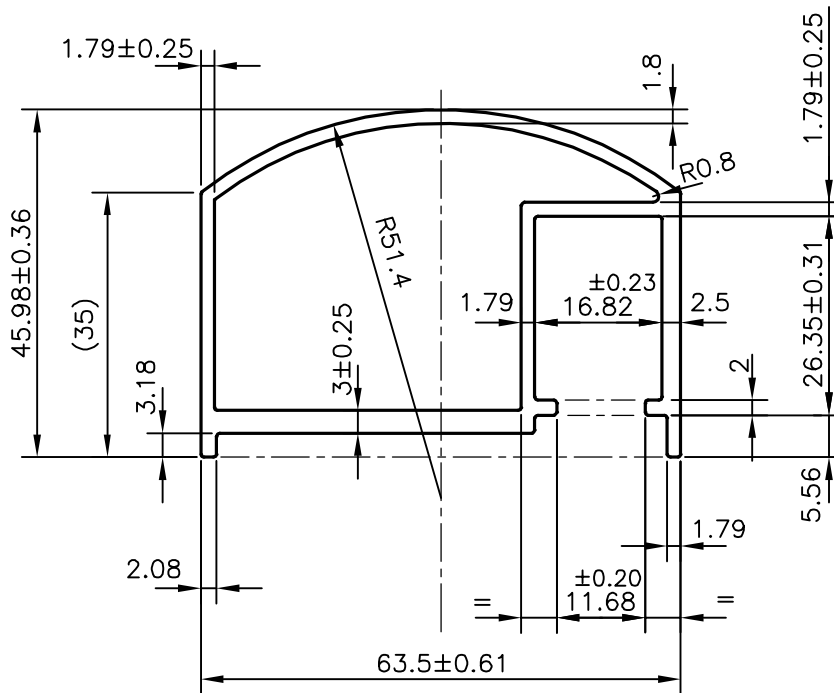
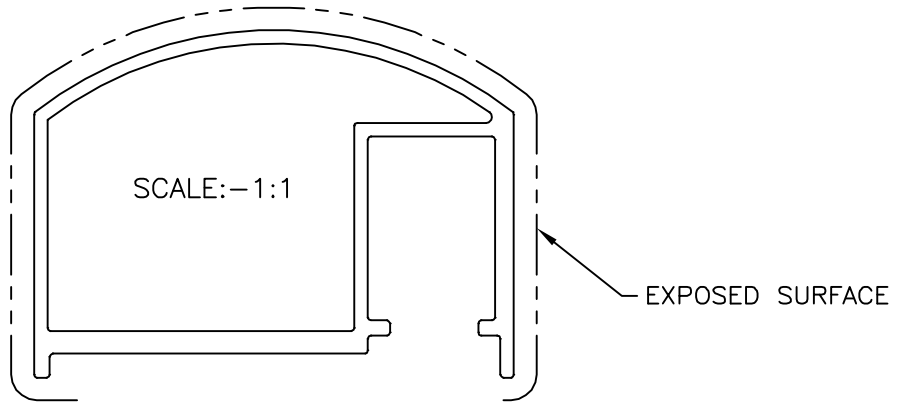


P-21090

X2675



SYMBOL OF QUALITY
AN ISO 9001 COMPANY

JINDAL ALUMINIUM LTD.
BANGALORE-560073 (INDIA)

| | NAME | DATE |
|----------|-------------|------------|
| DRAWN | J.P.KAUSHIK | 19-06-2020 |
| CHECKED | | |
| APPROVED | B.NATARAJA | 23-06-2020 |

1. ALL DIMENSIONS ARE IN mm.
2. ROUND OFF ALL SHARP CORNERS WITH 0.40 mm.
3. TOLERANCES WILL BE AS PER ANSI:H35.2-2009, UNLESS OTHERWISE SPECIFIED

| | |
|----------------------|---------|
| SCALE | 1:1 |
| AREA mm ² | 481.938 |
| PERIMETER mm. | 273.245 |
| WEIGHT kg/m | 1.301 |

| | |
|---------------------|---------------------------------------|
| PARTY'S NAME | PERMACORP GROUP OF COMPANIES, ALBERTA |
| PARTY'S DRAWING No. | AS PER DRAWING |
| ALLOY & TEMPER | 6063 T5 |
| DESCRIPTION | HAND RAIL SECTION |

| DRAWING No. | SECTION No. |
|-------------|-------------|
| P-21090 | - |
| X2675 | X2675 |
| | |
| | |