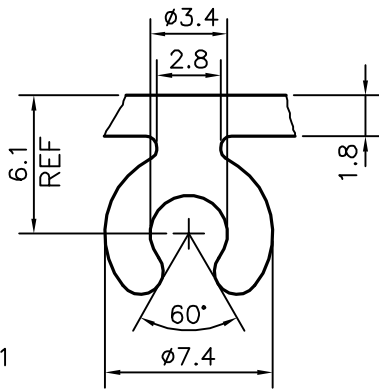


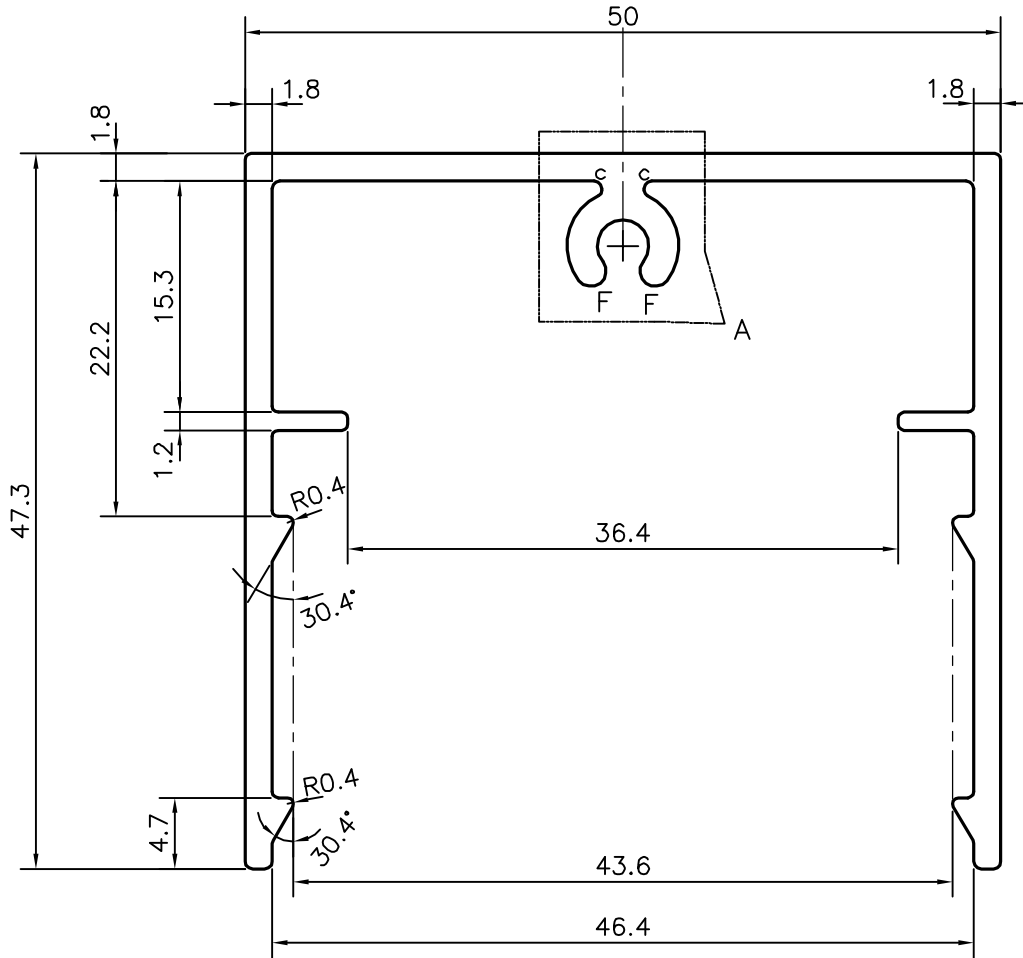
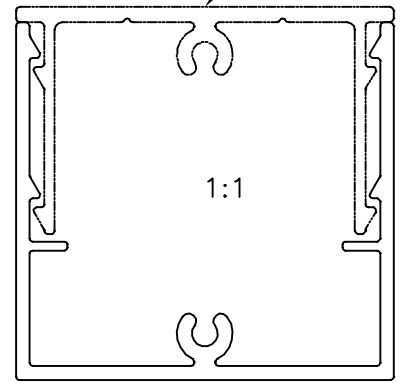
P-21274

X2699

X2698



DETAIL "A"  
SCALE 3:1



1. TWIST=1.7mm/M

2. ANGULARITY TOLERANCE=  $\pm 2^\circ$

3. GENERAL TOLERANCE=  $\pm 0.50$

c = 0.5 RADIUS (2 PLACES)

F = FULL RADIUS (2 PLACES)



SYMBOL OF QUALITY  
AN ISO 9001 COMPANY

**JINDAL ALUMINIUM LTD.**  
BANGALORE-560073 (INDIA)

	NAME	DATE
DRAWN	J.P.KAUSHIK	07-08-2020
CHECKED		
APPROVED	J.N.RAI	26-08-2020

1. ALL DIMENSIONS ARE IN mm.
2. ROUND OFF ALL SHARP CORNERS WITH 0.40 mm.
3. TOLERANCES WILL BE AS PER AS/NZS:1866-1997 UNLESS OTHERWISE SPECIFIED

SCALE	2:1
AREA mm <sup>2</sup>	304.535
PERIMETER mm.	334.295
WEIGHT kg/m	0.822

PARTY'S NAME	LINK POWDER COATING GROUP PTY. LTD., AUSTRALIA	DRAWING No.	P-21274	SECTION No.	-
PARTY'S DRAWING No.	LDD5050F OUTER REV. 02		X2699		X2699
ALLOY & TEMPER	6060 T6				
DESCRIPTION	MISC. SECTION				