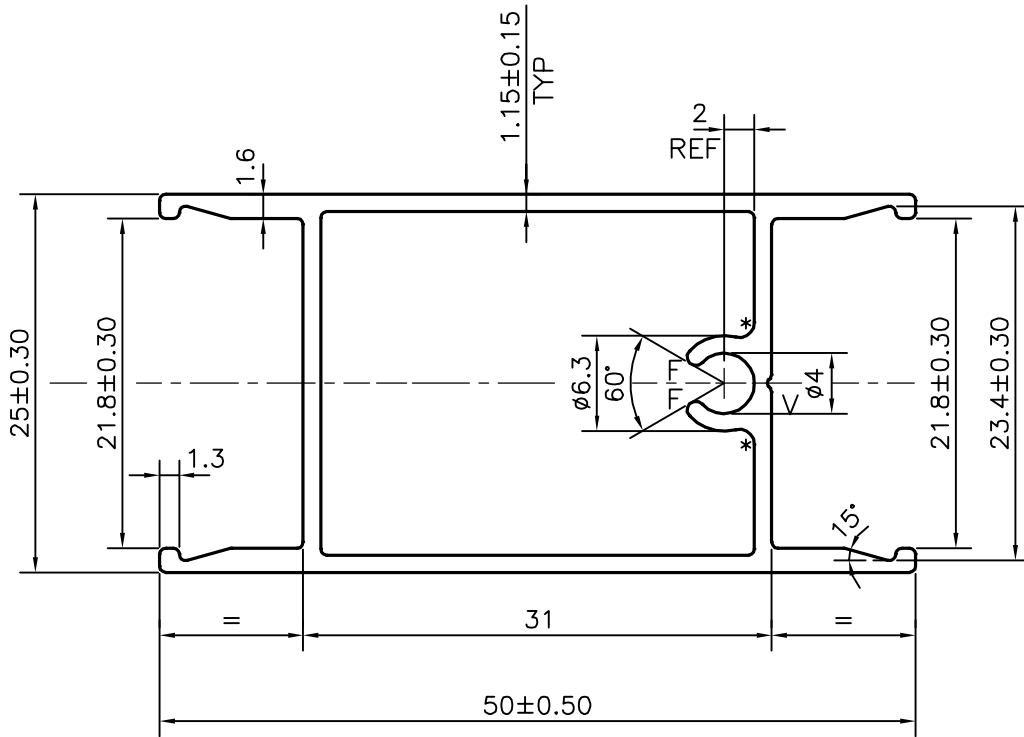
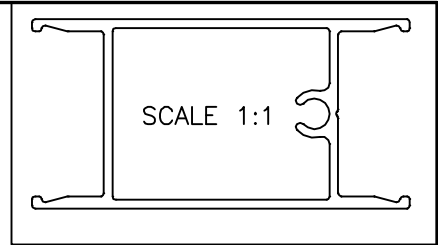


P-21504-1

X2731



\* = 1.0 RADIUS (2 PLACES)

F = FULL RADIUS (2 PLACES)

V = V GROOVE  $0.3 \times 90^\circ$  (1 PLACE)

AVERAGE WEIGHT:  $-0.447$  kg/m TO  $0.581$  kg/m



SYMBOL OF QUALITY  
AN ISO 9001 COMPANY

**JINDAL ALUMINIUM LTD.**  
BANGALORE-560073 (INDIA)

	NAME	DATE
DRAWN	J.P.KAUSHIK	16-10-2020
CHECKED		
APPROVED	B.NATARAJA	09-11-2020

1. ALL DIMENSIONS ARE IN mm.
2. ROUND OFF ALL SHARP CORNERS WITH 0.40 mm.
3. TOLERANCES WILL BE AS PER BS:EN-755-9, UNLESS OTHERWISE SPECIFIED

SCALE	2:1
AREA mm <sup>2</sup>	190.224
PERIMETER mm.	188.371
WEIGHT kg/m	0.514

PARTY'S NAME	PRAYOSHA ENTERPRISES LTD., UGANDA	DRAWING No.	P-21504-1	SECTION No.	-
PARTY'S DRAWING No.	MODIFIED OF 20921		X2731		X2731
ALLOY & TEMPER	6063 T6				
DESCRIPTION	WINDOW SECTION				