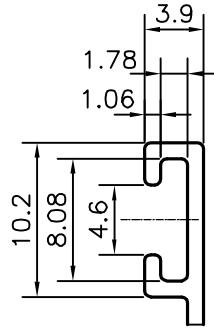
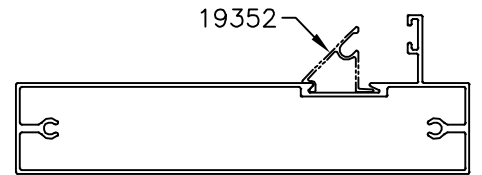


P-21596-1

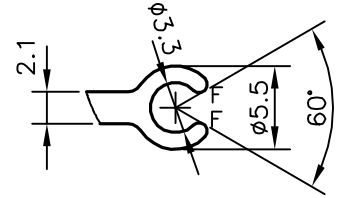
X2755



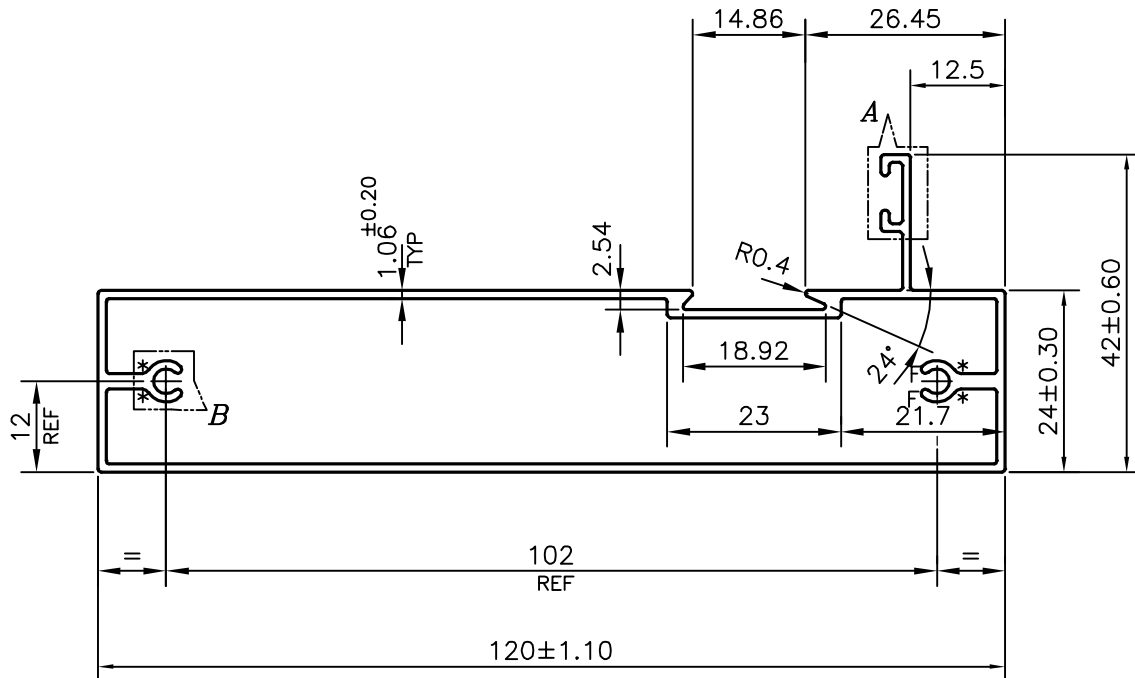
DETAIL OF "A"
SCALE:- 2:1



SCALE:- 1:2




DETAIL OF "B"
SCALE:- 2:1



AVERAGE WEIGHT:-0.859 kg/m TO 1.259 kg/m

* = 1.0 RADIUS (4 PLACES)
F = FULL RADIUS (4 PLACES)

| | | | |
|---|--|----------------------|------------------------|
|  SYMBOL OF QUALITY AN ISO 9001 COMPANY | JINDAL ALUMINIUM LTD. BANGALORE-560073 (INDIA) | NAME | DATE |
| | | DRAWN | J.P.KAUSHIK 29-10-2020 |
| | | CHECKED | |
| | | APPROVED | B.NATARAJA 10-11-2020 |
| 1. ALL DIMENSIONS ARE IN mm. 2. ROUND OFF ALL SHARP CORNERS WITH 0.40 mm. 3. TOLERANCES WILL BE AS PER BS:EN-755-9 UNLESS OTHERWISE SPECIFIED | | SCALE | 1:1 |
| | | AREA mm ² | 392.33 |
| | | PERIMETER mm. | 349.832 |
| | | WEIGHT kg/m | 1.059 |
| PARTY'S NAME | PRAYOSHA ENTERPRISES LTD., UGANDA | DRAWING No. | SECTION No. |
| PARTY'S DRAWING No. | MODIFIED OF 21433 | P-21596-1 | - |
| ALLOY & TEMPER | 6063 T6 | X2755 | X2755 |
| DESCRIPTION | WINDOW SECTION | | |