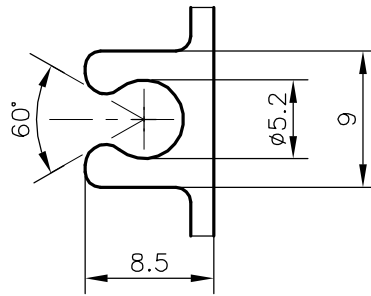
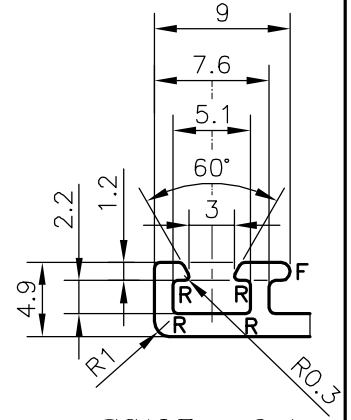


P-21472

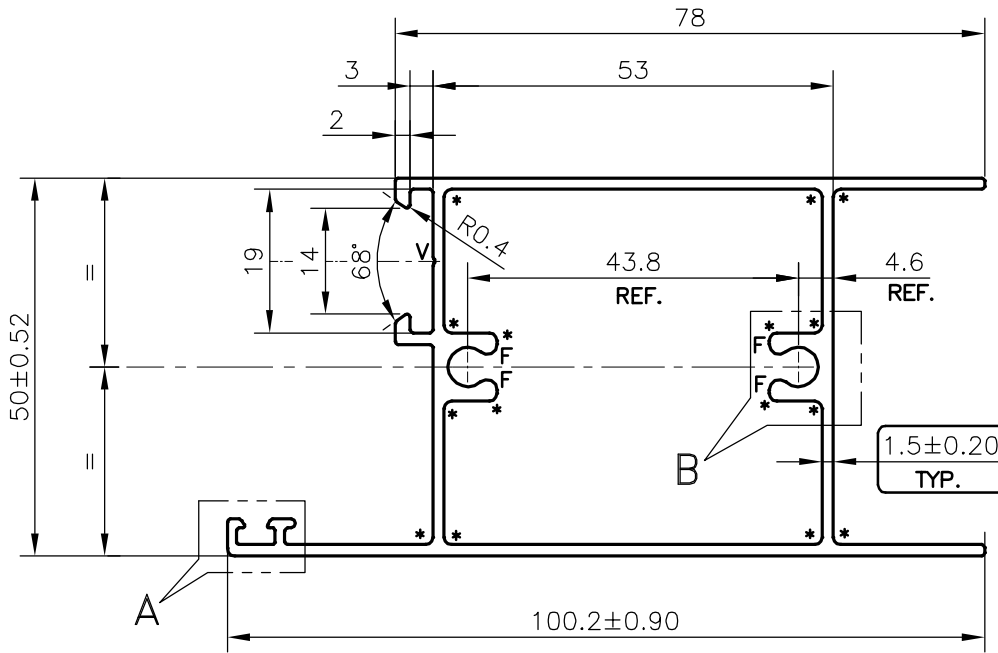
X2777



SCALE: - 2:1
DETAIL OF "B"



SCALE: - 2:1
DETAIL OF "A"



SCALE: - 1:1

WEIGHT RANGE (kg/m) - 1.238 - 1.513 (APPROX.)

- F = FULL RADIUS (5 PLACES)
- V="V" GROOVE 0.3x90° (1 PLACE)
- * = 1 mm RADIUS (15 PLACES)
- R = 0.3mm RADIUS (4 PLACES)

TOLERANCES ON OVERALL DIMENSIONS OF HOLLOW SECTIONS

UPTO 20.0mm - ±0.30	UPTO 80.0mm - ±0.70	UPTO 180.0mm - ±1.27	1. STRAIGHTNESS=1.7mm/M 2. TWIST=1.7mm/M 3. ANGULARITY= ±2° 4. FLATNESS =0.006xWIDTH
UPTO 30.0mm - ±0.38	UPTO 100.0mm - ±0.80	UPTO 200.0mm - ±1.40	
UPTO 40.0mm - ±0.45	UPTO 120.0mm - ±0.90	UPTO 225.0mm - ±1.52	
UPTO 50.0mm - ±0.52	UPTO 140.0mm - ±1.00		
UPTO 60.0mm - ±0.60	UPTO 160.0mm - ±1.14		



SYMBOL OF QUALITY
AN ISO 9001 COMPANY

JINDAL ALUMINIUM LTD.
BANGALORE-560073 (INDIA)

	NAME	DATE
DRAWN	DARPAN	15-09-2020
CHECKED		
APPROVED	B.NATARAJA	09-12-2020
SCALE		1:1
AREA mm ²		509.323
PERIMETER mm.		383.183
WEIGHT kg/m		1.375
DRAWING No.		SECTION No.
P-21472		-
X2777		X2777

1. ALL DIMENSIONS ARE IN mm.
2. ROUND OFF ALL SHARP CORNERS WITH 0.40 mm.
3. TOLERANCES WILL BE AS PER IS:6477-1983, UNLESS OTHERWISE SPECIFIED

PARTY'S NAME	HARI ALUMINIUM, AHMEDABAD
PARTY'S DRAWING No.	AS PER AutoCAD DRAWING
ALLOY & TEMPER	6063 T6
DESCRIPTION	WINDOW SECTION