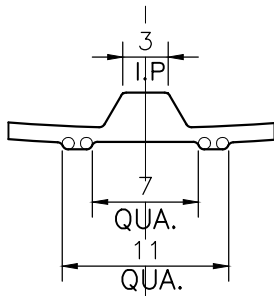
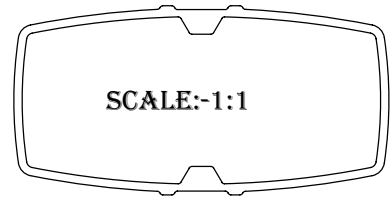
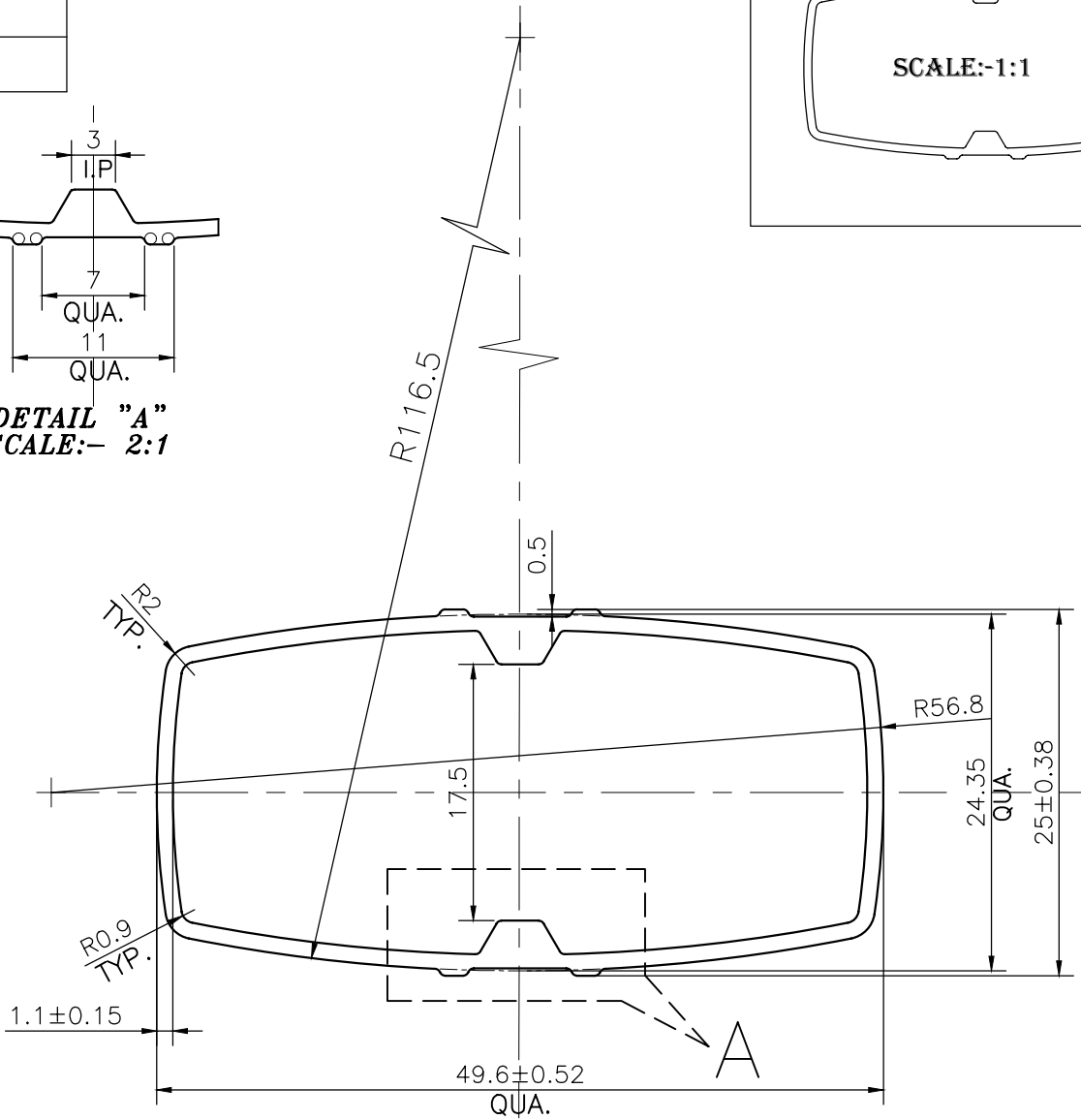


P-22938

X2991



DETAIL "A"
SCALE:- 2:1



SCALE:-2:1

WEIGHT RANGE:- NOT LESS THAN 1.95 KG/15 FEET TO 2.2 KG/15 FEET

TOLERANCES ON OVERALL DIMENSIONS OF HOLLOW SECTIONS

UPTO 20.0mm - ±0.30	UPTO 80.0mm - ±0.70	UPTO 180.0mm - ±1.27	1. STRAIGHTNESS=1.7mm/M 2. TWIST=1.7mm/M 3. ANGULARITY= ±2° 4. FLATNESS =0.006xWIDTH
UPTO 30.0mm - ±0.38	UPTO 100.0mm - ±0.80	UPTO 200.0mm - ±1.40	
UPTO 40.0mm - ±0.45	UPTO 120.0mm - ±0.90	UPTO 225.0mm - ±1.52	
UPTO 50.0mm - ±0.52	UPTO 140.0mm - ±1.00		
UPTO 60.0mm - ±0.60	UPTO 160.0mm - ±1.14		



SYMBOL OF QUALITY
AN ISO 9001 COMPANY

JINDAL ALUMINIUM LTD.
BANGALORE-560073 (INDIA)

	NAME	DATE
DRAWN	PUNITH	08-09-2021
CHECKED		
APPROVED	B.NATARAJA	18/09/2021
SCALE		2:1
AREA mm ²		164.738
PERIMETER mm.		135.671
WEIGHT kg/m		0.445
DRAWING No.	SECTION No.	
P-22938	-	
X2991	X2991	

1. ALL DIMENSIONS ARE IN mm.
2. ROUND OFF ALL SHARP CORNERS WITH 0.40 mm.
3. TOLERANCES WILL BE AS PER IS:6477-1983, UNLESS OTHERWISE SPECIFIED

PARTY'S NAME	ATCO ALUMINIUM SYSTEMS ,DELHI
PARTY'S DRAWING No.	LIGHTER OF SECTION NO. 22049
ALLOY & TEMPER	HE9 WP
DESCRIPTION	VENETIAN BLINDS