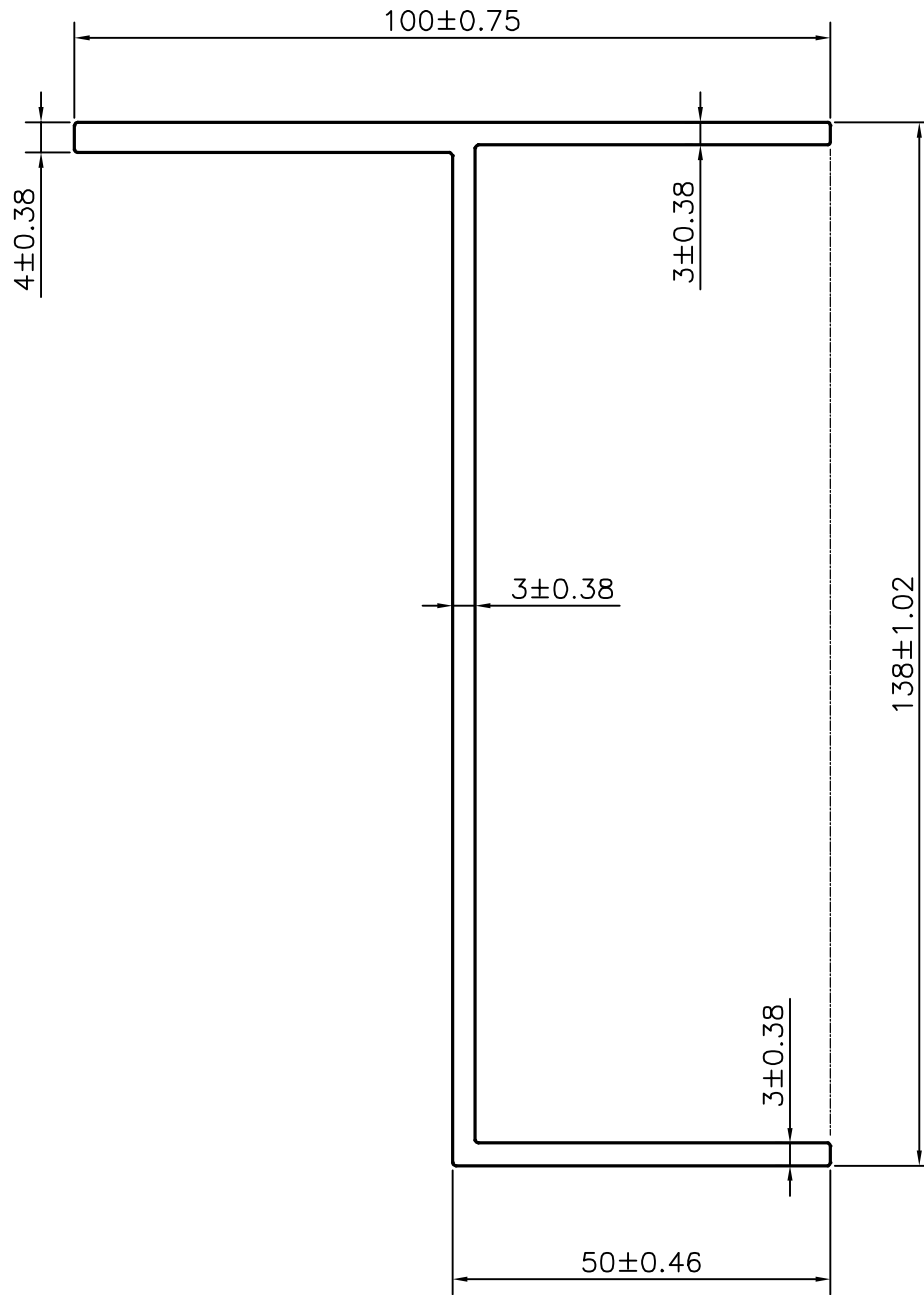



P-23038

X3016



1. STRAIGHTNESS= 1.5mm/M
2. TWIST= 1.5mm/M
3. ANGULARITY= ±2'
4. FLATNESS= 0.006xWIDTH

APPROXIMATE WEIGHT RANGE -2.177 - 2.661 kg/m

 SYMBOL OF QUALITY AN ISO 9001 COMPANY	<b>JINDAL ALUMINIUM LTD.</b> BANGALORE-560073 (INDIA)	NAME	DATE
		DRAWN SURENDRA	19-10-2021
		CHECKED	
		APPROVED B.NATARAJA	23-10-2021
1. ALL DIMENSIONS ARE IN mm. 2. ROUND OFF ALL SHARP CORNERS WITH 0.40 mm. 3. TOLERANCES WILL BE AS PER IS:3965-1981 , UNLESS OTHERWISE SPECIFIED		SCALE	1:1
		AREA mm <sup>2</sup>	895.863
PARTY'S NAME EVERGREEN TECHNOLOGIES PVT LTD-MUMBAI		PERIMETER mm.	568.283
		WEIGHT kg/m	2.419
PARTY'S DRAWING No. AS PER DRAWING - EPL-15902		DRAWING No.	SECTION No.
		P-23038	-
ALLOY & TEMPER 6060 T6		X3016	X3016
DESCRIPTION TOP & SIDE FRAME SECTION SECTION			