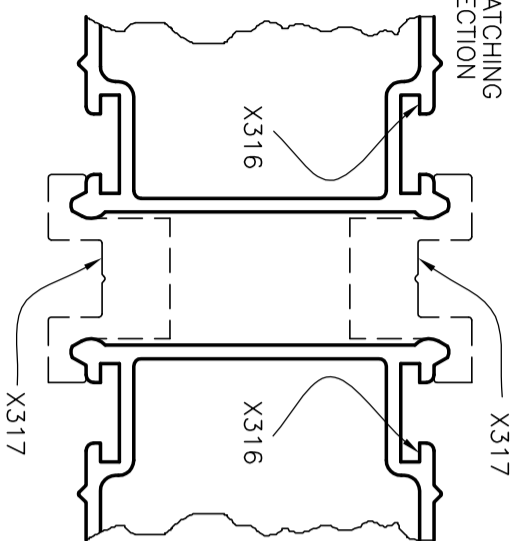


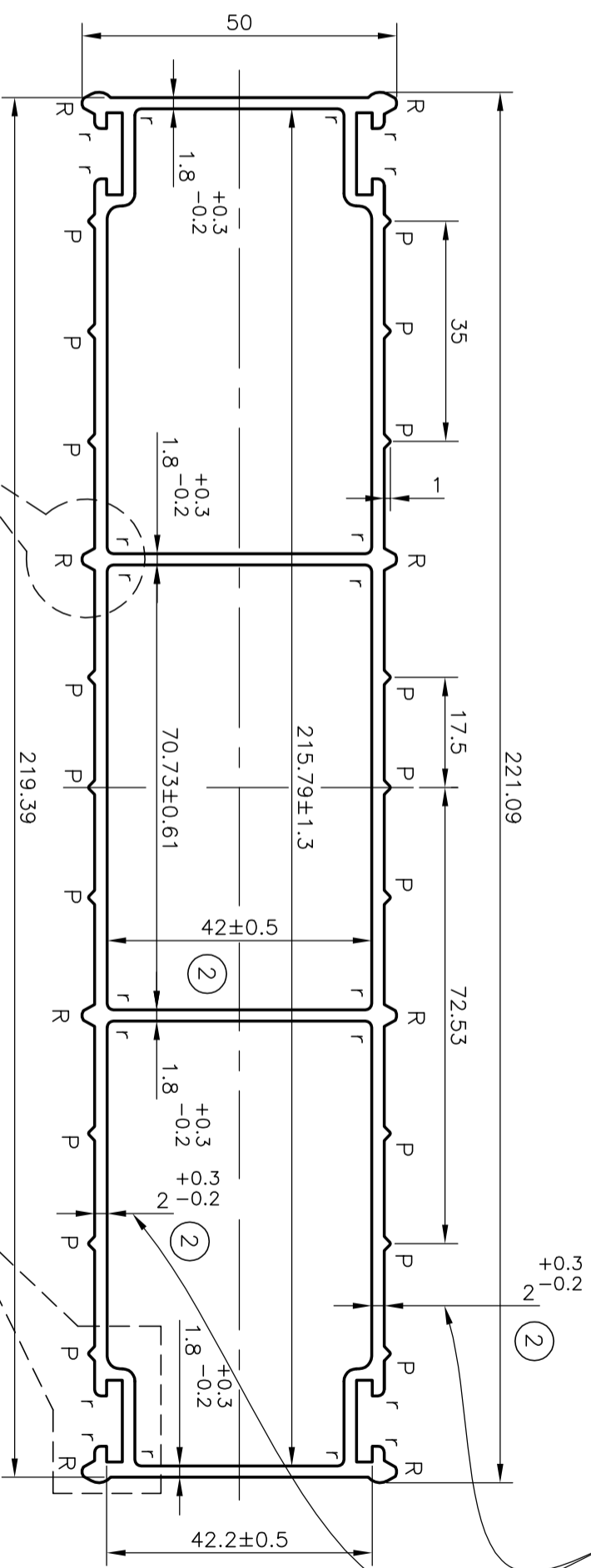
P-4595-2

X316

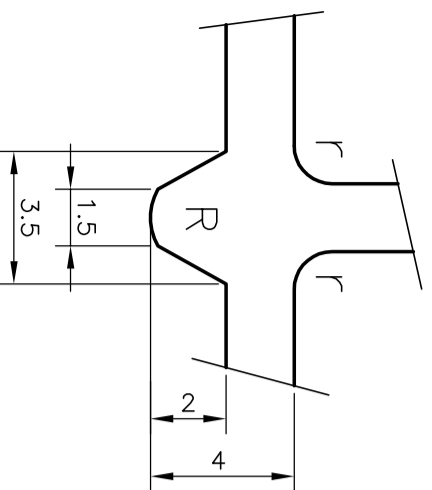
MATCHING SECTION



IT IS CRITICAL THAT THIS DIMENSION IS MAINTAINED TO ENSURE THAT DEFLECTION PERFORMANCE IS IN ACCORDANCE WITH AUSTRALIAN STANDARDS.



**DETAIL "B"**  
SCALE 5:1



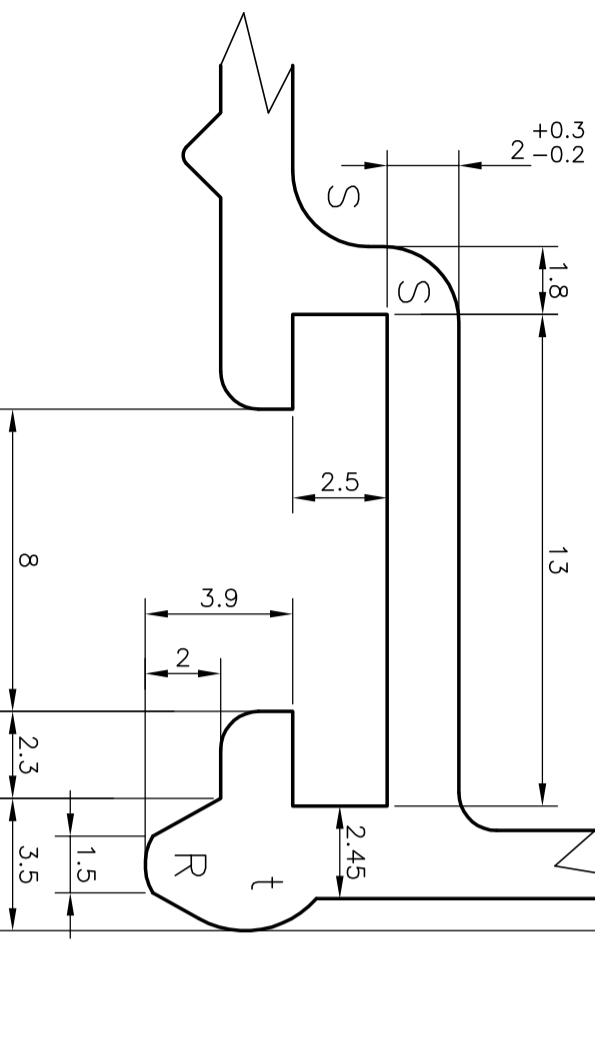
**DETAIL "B"**

1.  $r = 1.0$  RADIUS (20)
2.  $R = 1.50$  RADIUS (8)
3.  $t = 2.50$  RADIUS (4)
4.  $P =$  PIPPS  $1.0$  HIGH  $\times 90^\circ$  (18)
5.  $S = 2.0$  RADIUS (8 PLACES)
6. ALL EXTERNAL SURFACES VISIBLE


**DETAIL "A"**

TWIST = 0.50mm/300mm LENGTH  
STRAIGHTNESS = 0.60mm/300mm LENGTH  
FLATNESS = 1.32mm  
TOLERANCES WILL BE AS PER AS/NZS:-1866-1997

**DETAIL "A"**  
SCALE 5:1



ISSUE-2 DIMENSIONS CHANGED FROM  
1.90 $\pm$ 0.25 TO 2.00 $\pm$ 0.3  
42.20 $\pm$ 0.50 TO 42.00 $\pm$ 0.50  
& WEIGHT ALSO CHANGED FROM 3.472 TO 3.587kg/M

 SYMBOL OF QUALITY AN ISO 9001 COMPANY		<b>JINDAL ALUMINIUM LTD.</b> BANGALORE-560073 (INDIA)	
PARTY'S NAME		MAYFAIR IMPORTS , AUSTRALIA	
PARTY'S DRAWING No.		AS PER DRAWING & AS PER REQUIREMENT	
ALLOY & TEMPER		6005 T6	
DESCRIPTION		SCAFFOLD PLANK	
DRAWN	NAME	DATE	
CHECKED	RAGHAVENDRA	13-07-2004	
APPROVED			
SCALE		1:1	
AREA mm <sup>2</sup>		1328.444	
PERIMETER mm.		638.768	
WEIGHT kg/m		3.587	
DRAWING No.		SECTION No.	
P-4595-2		-	
X316		X316-ISSUE-2	