

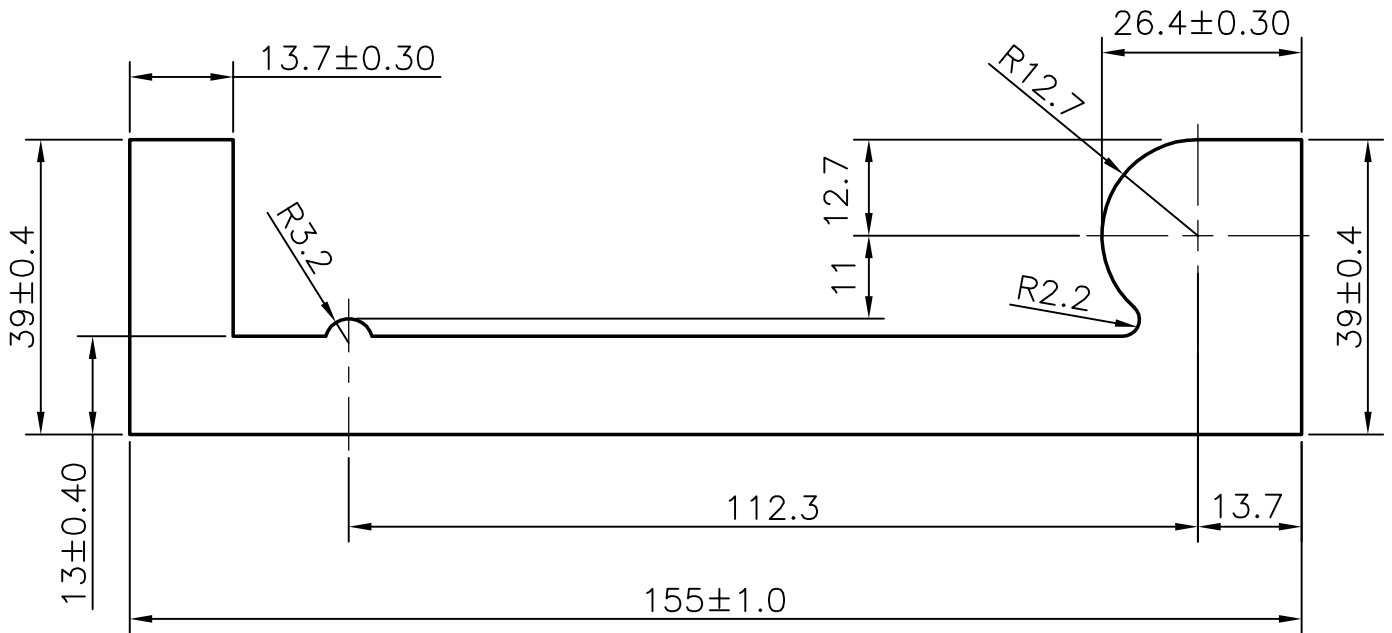
P-3993

S936(2)

27570

X389

1. TOLERANCES FOR STRAIGHTNESS & TWIST :- 1.70 mm./M
2. COCAVITY & COXVEXITY:- ± 1.10 mm.
3. ANGULAR TOLERANCE:- $\pm 1.50^\circ$



DIMENSION CHANGED FROM 12 ± 0.40 TO 13 ± 0.40 AND WEIGHT ALSO CHANGED FROM 7.790 kg/m TO 8.109 kg/m



SYMBOL OF QUALITY
AN ISO 9002 COMPANY

JINDAL ALUMINIUM LTD.
BANGALORE-560073 (INDIA)

	NAME	DATE
DRAWN	R.D.Sharma	21-04-03
CHECKED		
APPROVED		

1. ALL DIMENSIONS ARE IN mm.
2. ROUND OFF ALL SHARP CORNERS WITH 0.50 mm.
3. TOLERANCES WILL BE AS PER IS 3965-1981 UNLESS OTHERWISE SPECIFIED

SCALE	1:1
AREA mm ²	3003.5
PERIMETER mm.	442
WEIGHT kg/m	8.109
SECTION No.	X389
DRAWING No.	X389

PARTY'S NAME	SAHAJANAND LASER TECHNOLOGY PVT. LTD., SURAT
PARTY'S DRAWING No.	LM2.1.11.01
ALLOY & TEMPER	6005 T6
DESCRIPTION	"C" CARRIAGE SECTION