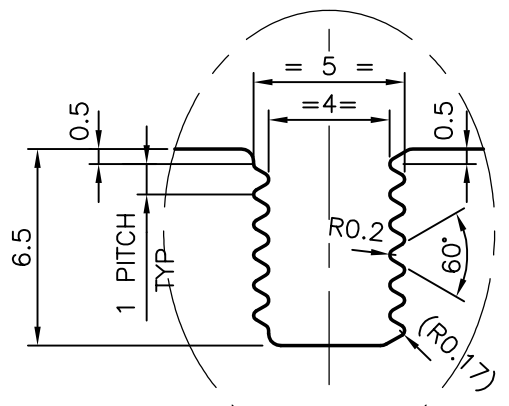
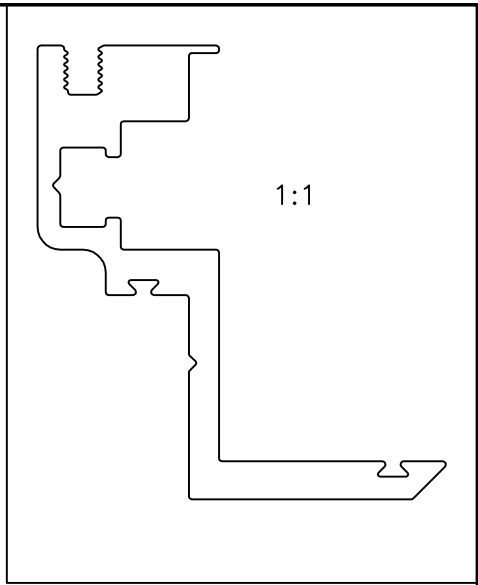
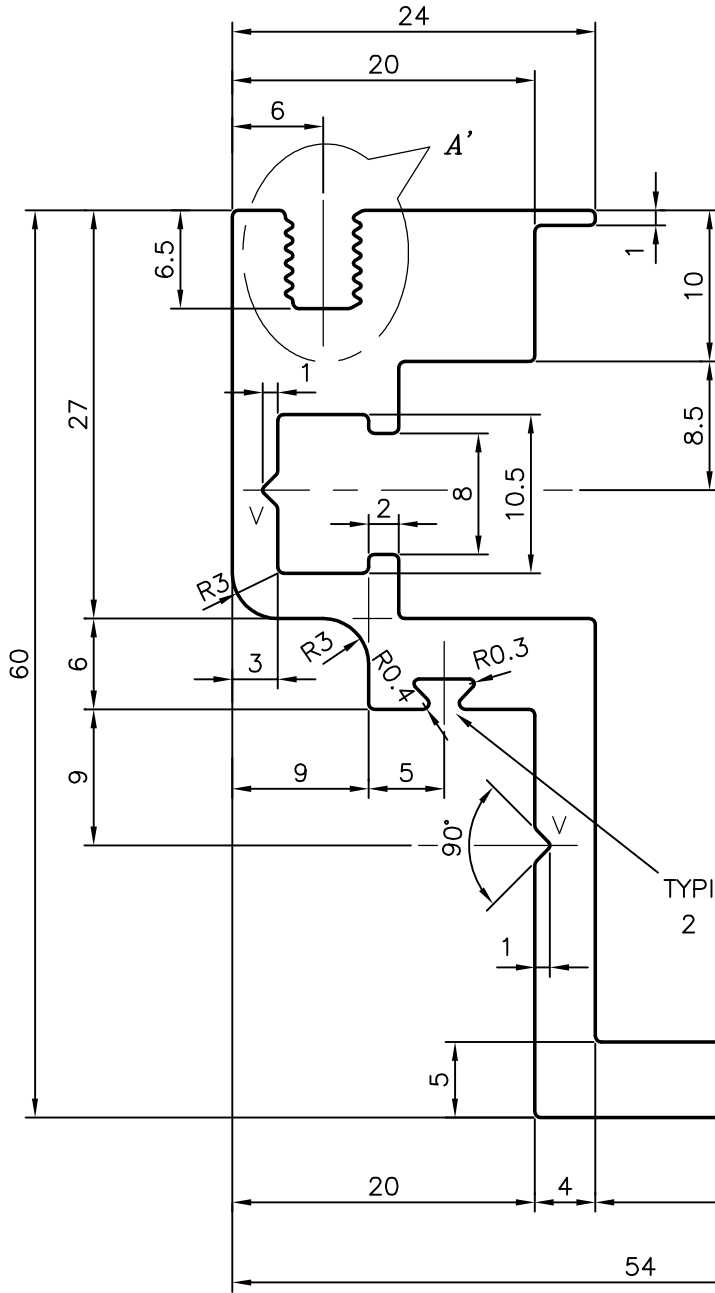


P-5572

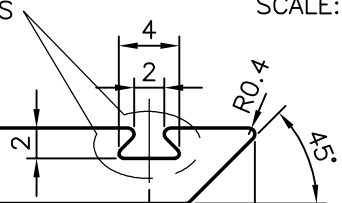
X398

V = 1.0x90°xR0.3 (2 PLACES)
 FLATNESS:- ±0.5 mm
 ANGULARITY ±1.0°



DETAIL -A
 SCALE: 4:1

TYPICAL GROOVE AT
 2 PLACES



SYMBOL OF QUALITY
 AN ISO 9001 COMPANY

JINDAL ALUMINIUM LTD.
 BANGALORE-560073 (INDIA)

	NAME	DATE
DRAWN	MALINGAPPA	11-06-2005
CHECKED		
APPROVED		

1. ALL DIMENSIONS ARE IN mm.
2. ROUND OFF ALL SHARP CORNERS WITH 0.40 mm.
3. TOLERANCES WILL BE AS PER DIN: 1748 UNLESS OTHERWISE SPECIFIED

SCALE	1:1
AREA mm ²	606.608
PERIMETER mm.	297.554
WEIGHT kg/m	1.638

PARTY'S NAME: MGI (INDIA) PVT. LTD., GURGAON

DRAWING No.	SECTION No.
P-5572	-
X398	X398

PARTY'S DRAWING No.: AS PER DRAWING

ALLOY & TEMPER: 6063 T6

DESCRIPTION: -