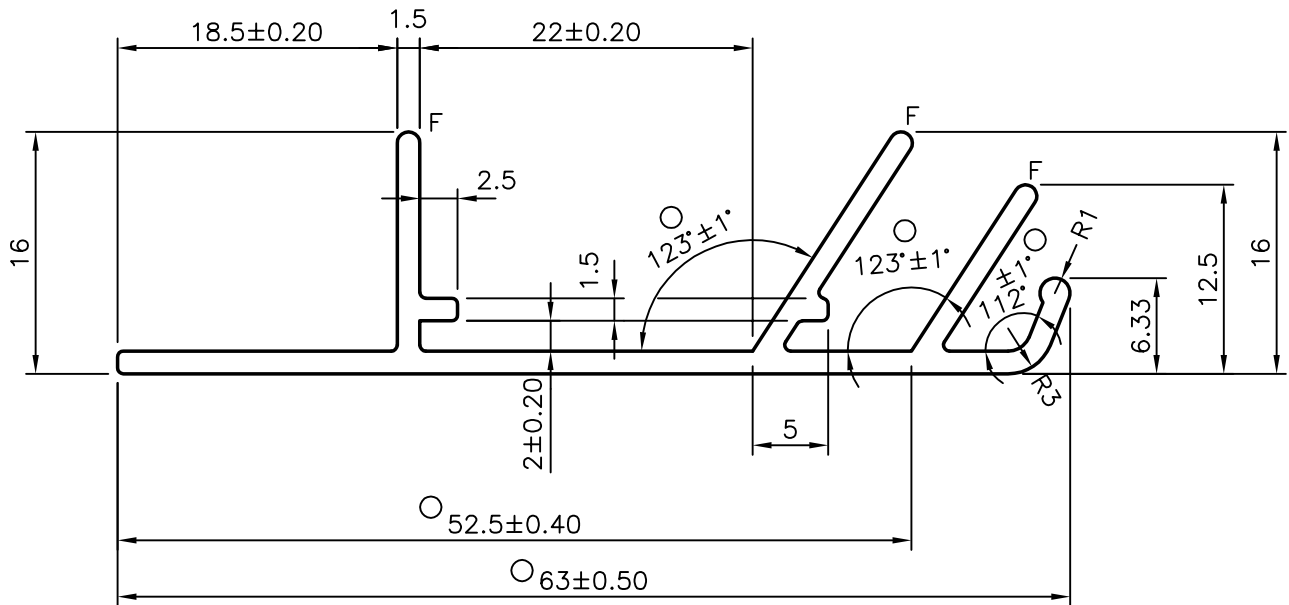
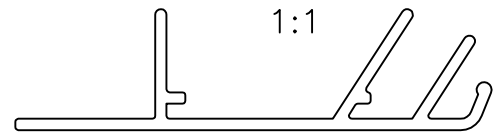


P-5640

X417



1. GENERAL WALL THICKNESS:- 1.50 mm.
2. F = FULL RADIUS (3)

ISSUE-2 "O" MARKED ANGULARITY TOLERANCE AND DIMENSION TOLERANCES CHANGED  
 ANGULARITY TOLERANCE  $\pm 2^\circ$  TO  $\pm 1^\circ$   
 $52.5 \pm 0.50$  TO  $52.5 \pm 0.40$   
 $63 \pm 0.60$  TO  $63 \pm 0.50$



SYMBOL OF QUALITY  
AN ISO 9002 COMPANY

**JINDAL ALUMINIUM LTD.**  
BANGALORE-560073 (INDIA)

	NAME	DATE
DRAWN	MALINGAPPA	07-07-2005
CHECKED		
APPROVED		
SCALE		2:1
AREA mm <sup>2</sup>		171.566
PERIMETER mm.		225.508
WEIGHT kg/m		0.463
DRAWING No.	SECTION No.	
P-5640	-	
X417	X417-ISSUE-2	

1. ALL DIMENSIONS ARE IN mm. 2. ROUND OFF ALL SHARP CORNERS WITH 0.40 mm. 3. TOLERANCES WILL BE AS PER IS:3965-1981 UNLESS OTHERWISE SPECIFIED	
PARTY'S NAME	INDO-WESTERN REFRIGERATION PVT. LTD., SHAHAPUR
PARTY'S DRAWING No.	0300612
ALLOY & TEMPER	HE9 WP
DESCRIPTION	RADIUS CANOPY