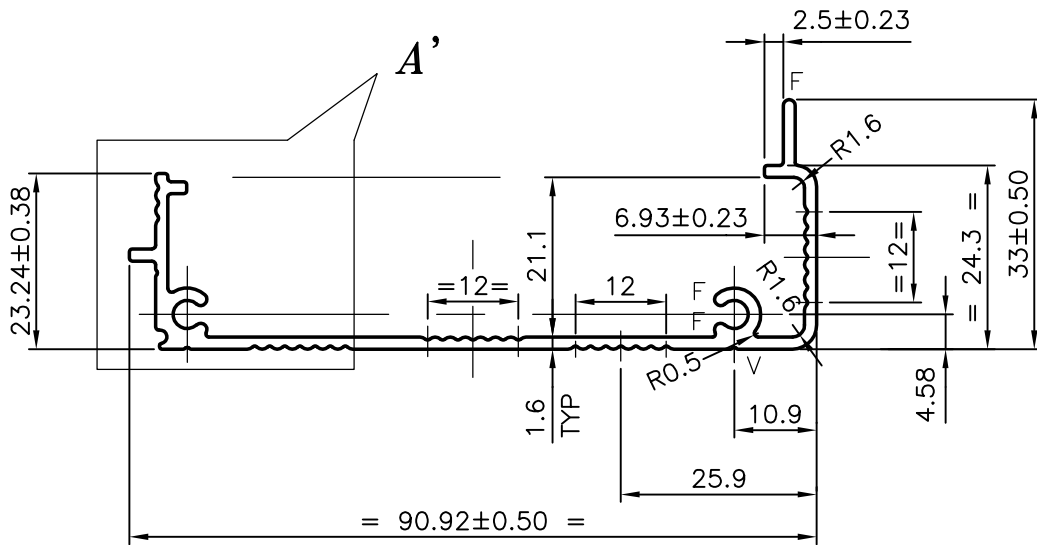
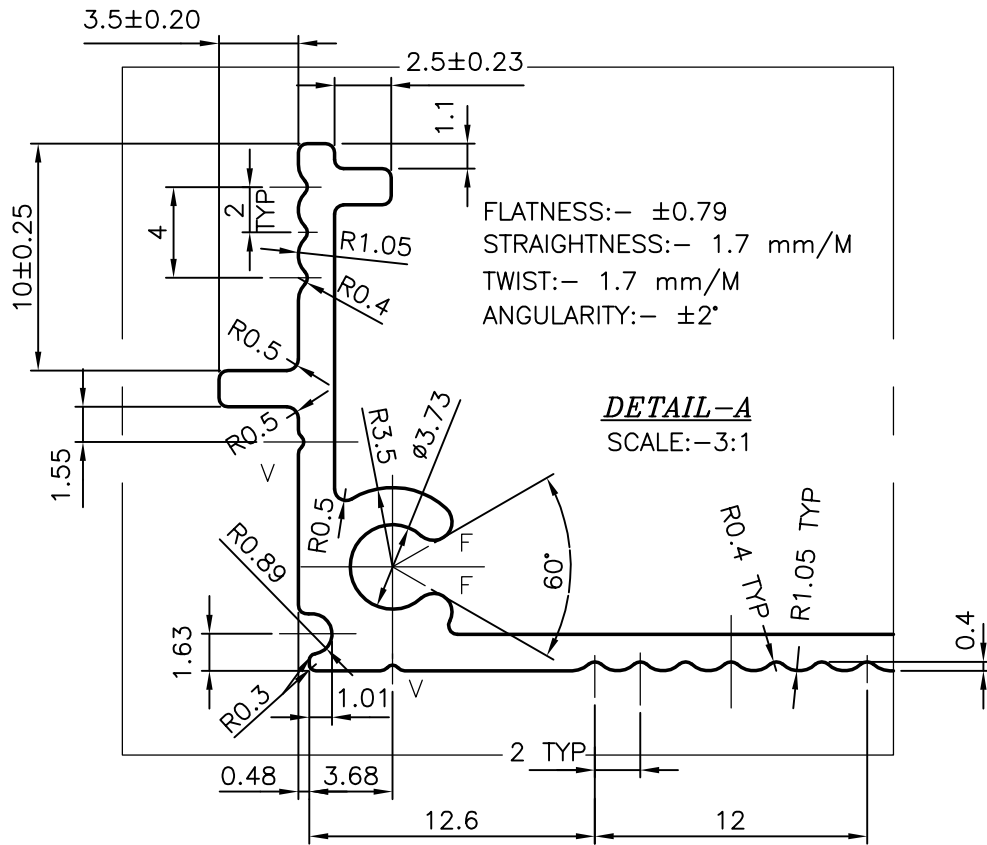


P-5839-1

X419



GENERAL WALL THICKNESS = $1.6 \begin{matrix} +0.24 \\ -0.00 \end{matrix}$
 V = VEE GROOVE 0.30xR0.30 (3 PLACES)
 F = FULL RADIUS (5 PLACES)



SYMBOL OF QUALITY
 AN ISO 9001 COMPANY

JINDAL ALUMINIUM LTD.
 BANGALORE-560073 (INDIA)

	NAME	DATE
DRAWN	MALINGAPPA	02-09-2005
CHECKED		
APPROVED		
SCALE		1:1
AREA mm ²		266.32
PERIMETER mm.		335.341
WEIGHT kg/m		0.719
DRAWING No.	SECTION No.	
P-5839-1	-	
X419	X419	

- ALL DIMENSIONS ARE IN mm.
- ROUND OFF ALL SHARP CORNERS WITH 0.40 mm.
- TOLERANCES WILL BE AS PER IS:3965-1981 UNLESS OTHERWISE SPECIFIED

PARTY'S NAME TATA BP SOLAR INDIA LTD., BANGALORE

PARTY'S DRAWING No. DVP0750A REV. 2 (HEAVIER OF ' X022')

ALLOY & TEMPER HE9 WP

DESCRIPTION COLLECTOR FRAME TOP AND BOTTOM