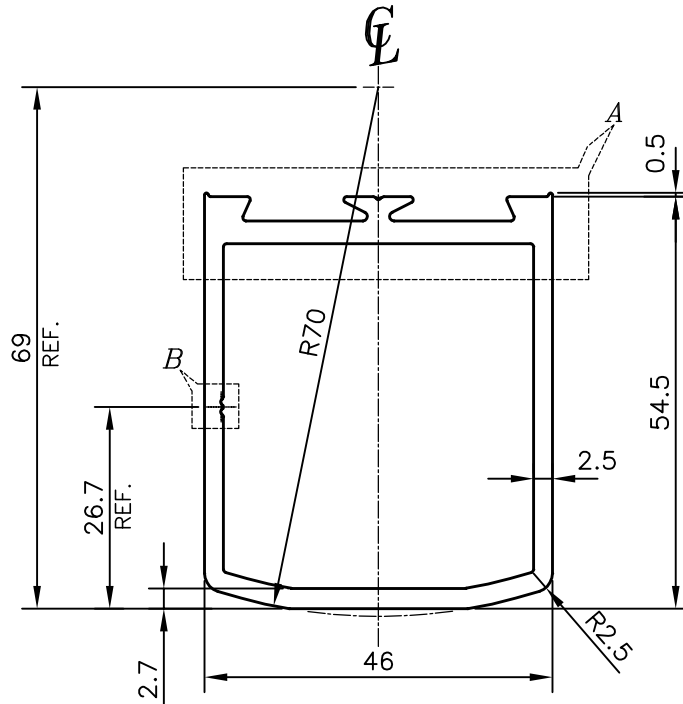
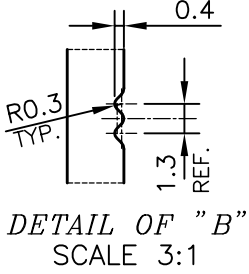
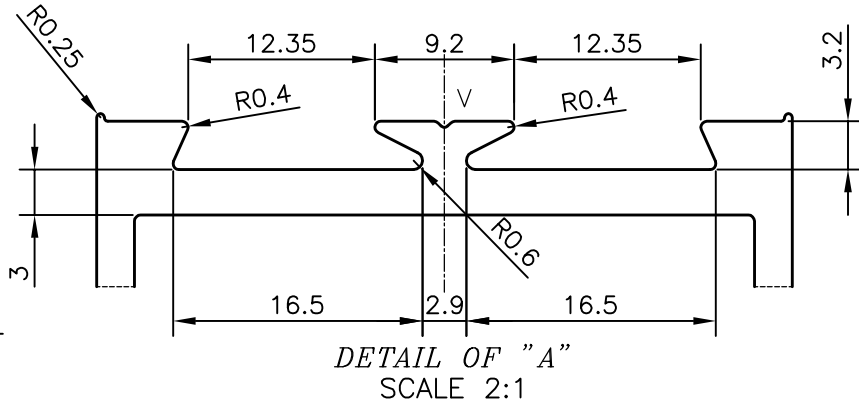


P-6019

X472



V = GROOVE 0.4x90° (1 PLACE)

ISSUE-2

PROFILE MODIFIED AS PER NEW SAMPLE (CS 20 NEW)



SYMBOL OF QUALITY
AN ISO 9001 COMPANY

JINDAL ALUMINIUM LTD.
BANGALORE-560073 (INDIA)

	NAME	DATE
DRAWN	PARVESH	18-10-2014
CHECKED		
APPROVED	S.S.GARG	02-12-2014
SCALE		1:1
AREA mm ²		529.303
PERIMETER mm.		220.25
WEIGHT kg/m		1.429
DRAWING No.	SECTION No.	
P-6019	-	
X472	X472 (ISSUE-2)	

1. ALL DIMENSIONS ARE IN mm.
2. ROUND OFF ALL SHARP CORNERS WITH 0.40 mm.
3. TOLERANCES WILL BE AS PER BS:EN-755-9 , UNLESS OTHERWISE SPECIFIED

PARTY'S NAME	P D ALUMINIUM LTD, UK
PARTY'S DRAWING No.	AS PER SAMPLE-CS 20 NEW
ALLOY & TEMPER	6063 T6
DESCRIPTION	DOOR SECTION