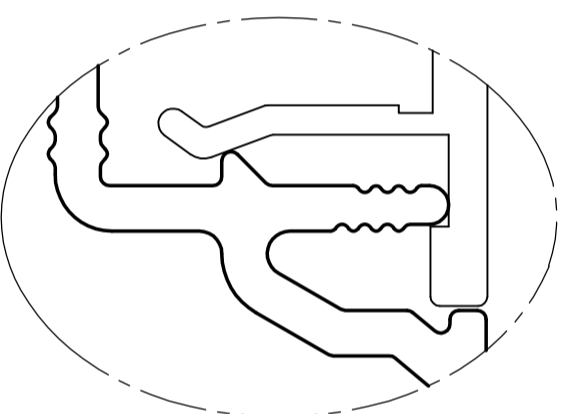
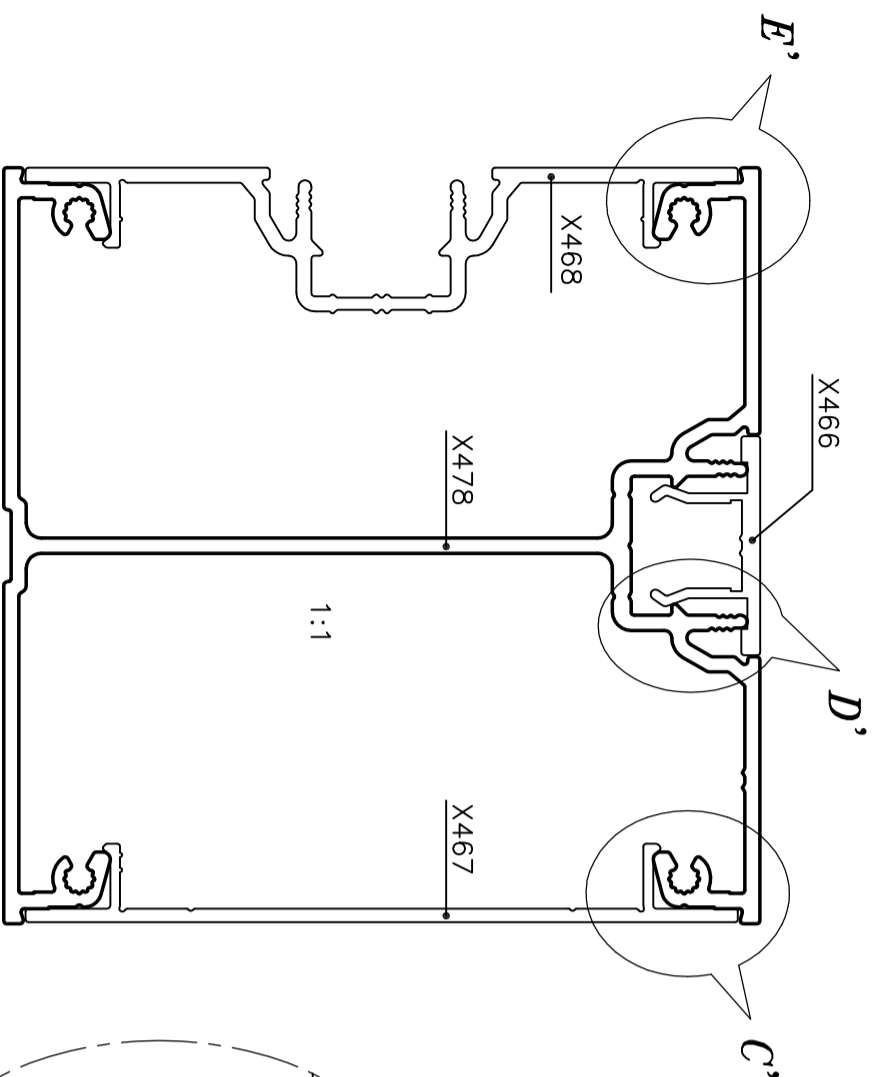


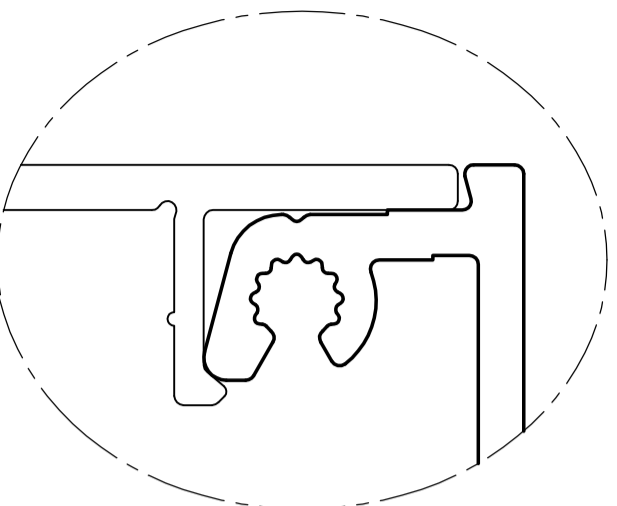
P-6027

X478

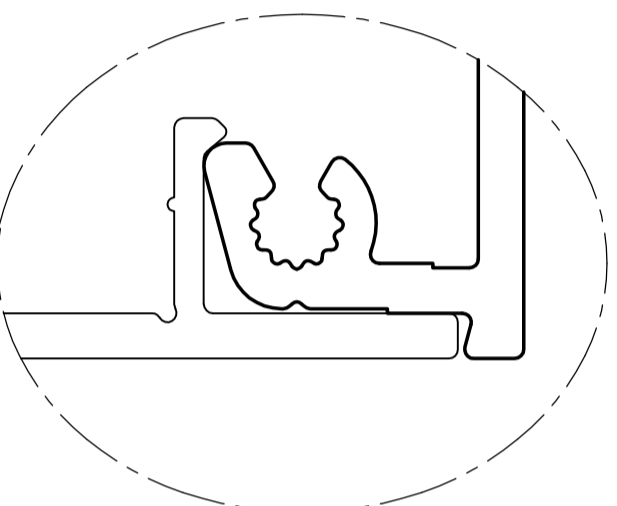
GENERAL WALL THICKNESS = 2 mm
 P = PIP 0.3x90°xR0.3 (2 PLACES)
 V = VEE GROOVE 0.3x90°xR0.3 (9 PLACES)



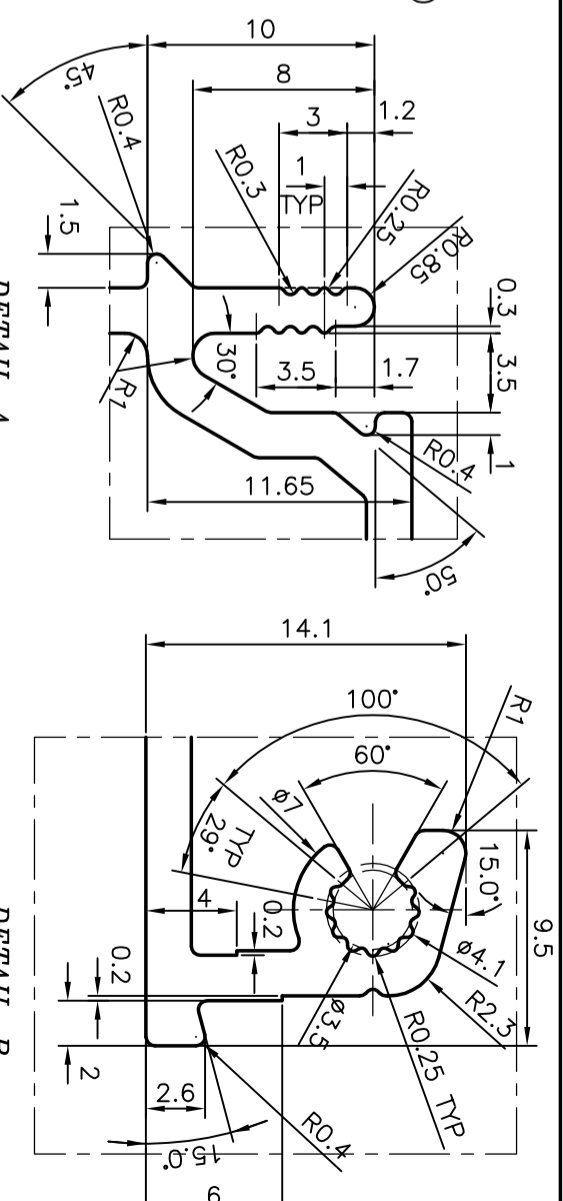
DETAIL-D
SCALE:-3:1



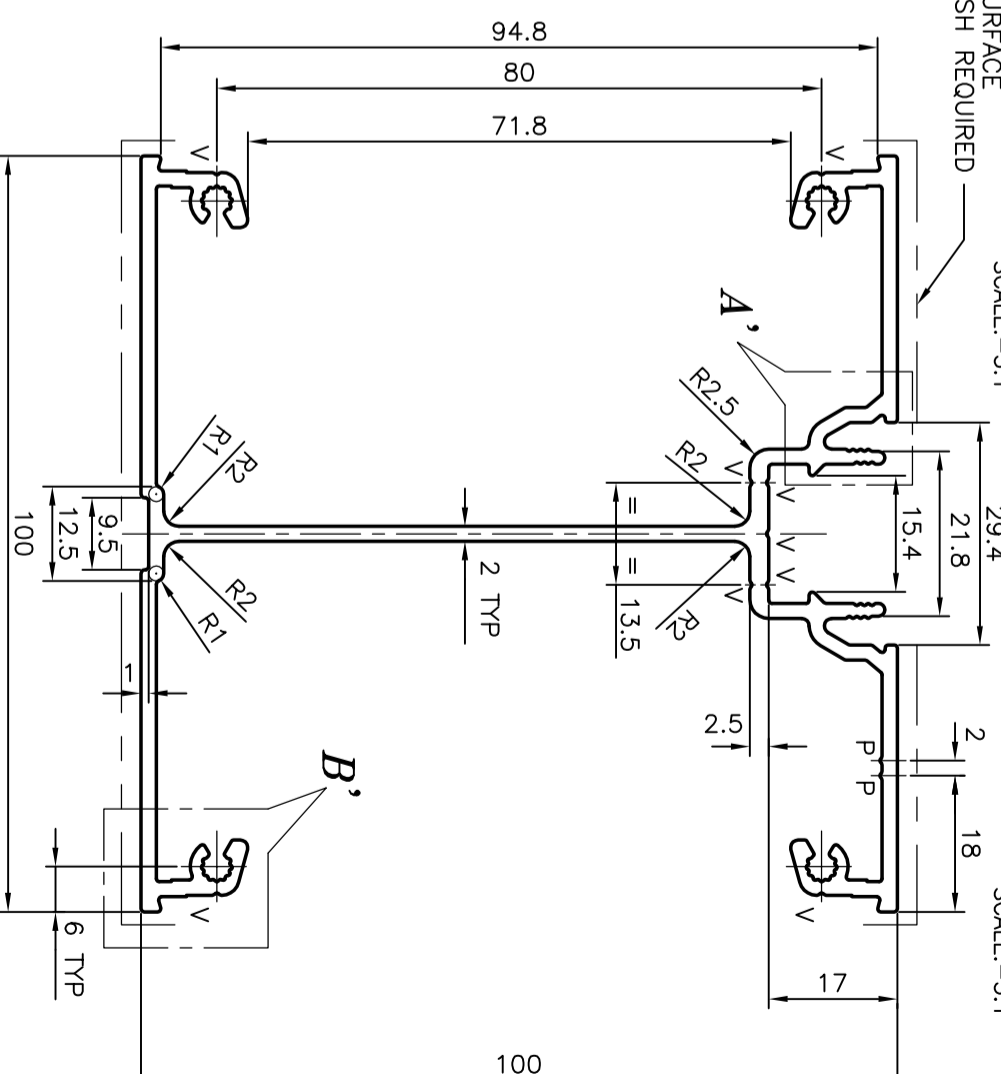
DETAIL-E
SCALE:-3:1




DETAIL-C
SCALE:-3:1



DETAIL-A
SCALE:-3:1



DETAIL-B
SCALE:-3:1

 SYMBOL OF QUALITY AN ISO 9001 COMPANY		JINDAL ALUMINIUM LTD. BANGALORE-560073 (INDIA)	
1. ALL DIMENSIONS ARE IN mm. 2. ROUND OFF ALL SHARP CORNERS WITH 0.40 mm. 3. TOLERANCES WILL BE AS PER BS:1474-1987 UNLESS OTHERWISE SPECIFIED		NAME MALINGAPPA05-12-2005	DATE
PARTY'S NAME	J. CAPITAL SHOPFRONT LTD., U.K.	SCALE	1:1
PARTY'S DRAWING No.	AS PER SAMPLE	AREA mm ²	826.954
ALLOY & TEMPER	6063 T6	PERIMETER mm.	822.852
DESCRIPTION	MISC. SECTION	WEIGHT kg/m	2.233
		DRAWING No.	SECTION No.
		P-6027	-
		X478	X478