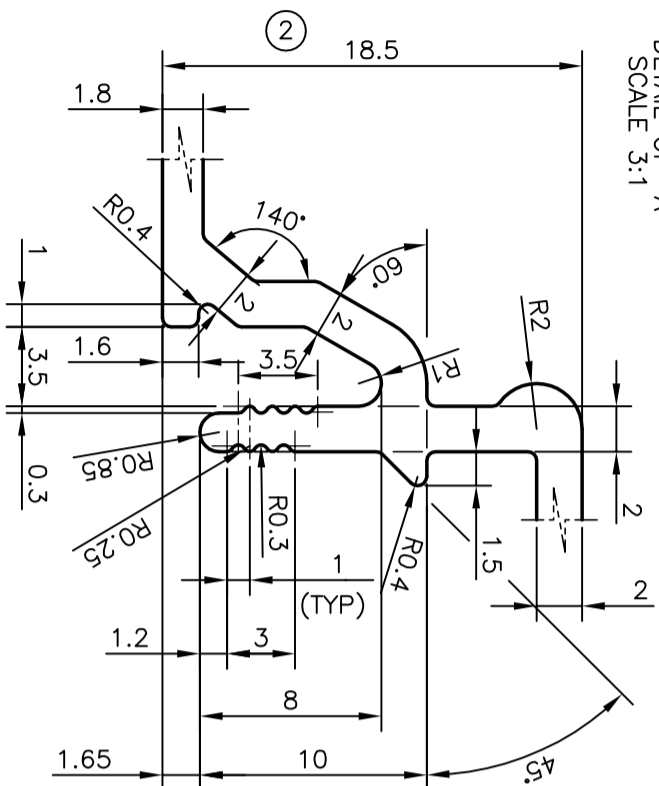


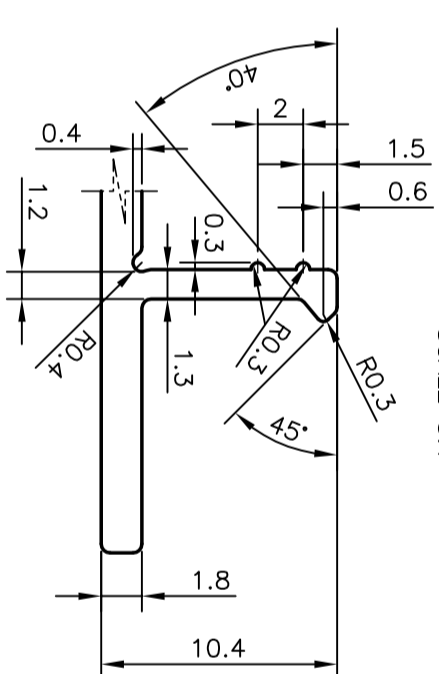
P-7476

X758

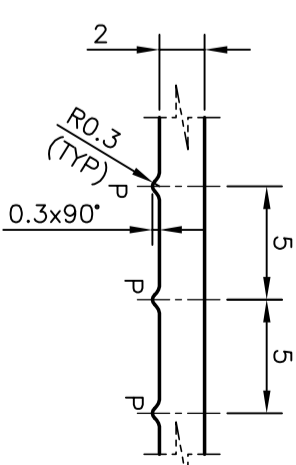
DETAIL OF "A"
SCALE 3:1



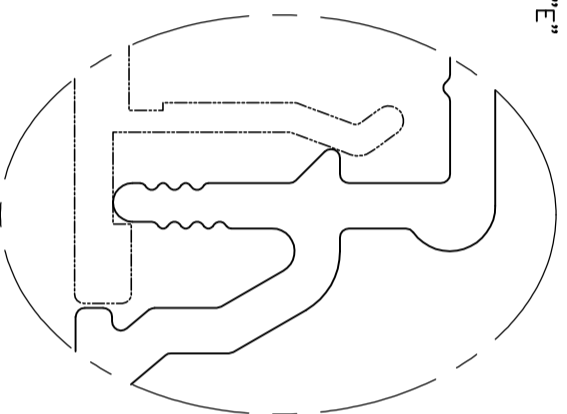
DETAIL OF "B"
SCALE 3:1



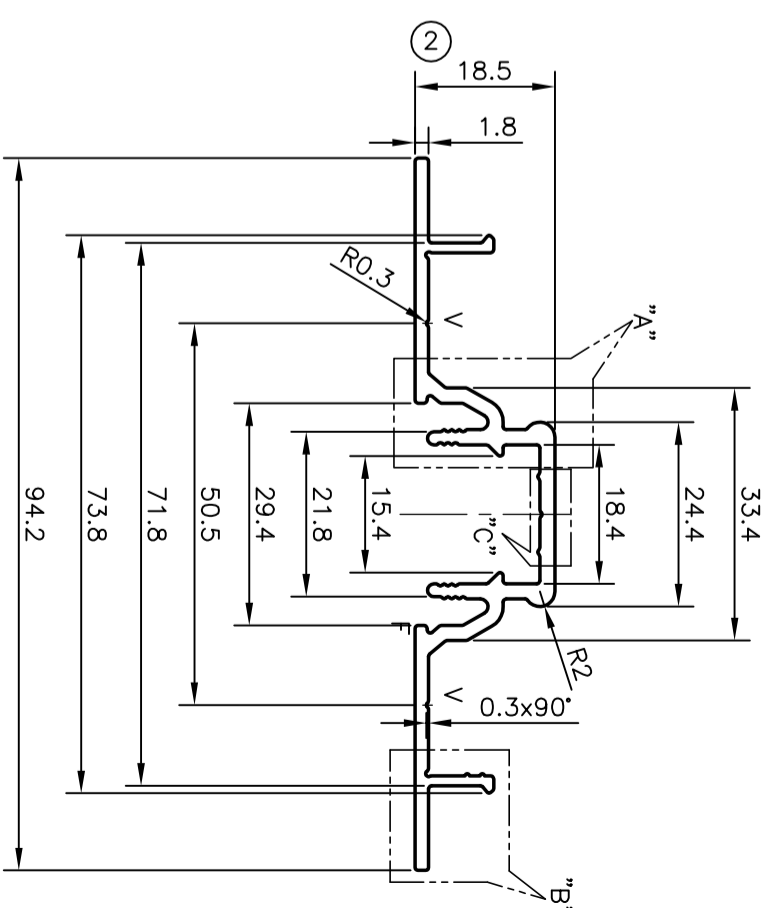
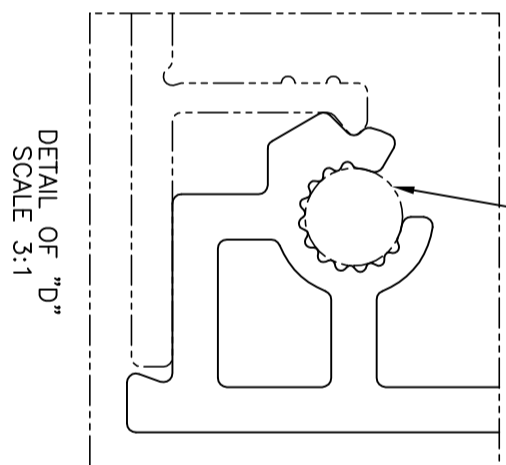
DETAIL OF "C"
SCALE 3:1



DETAIL OF "E"
SCALE 3:1



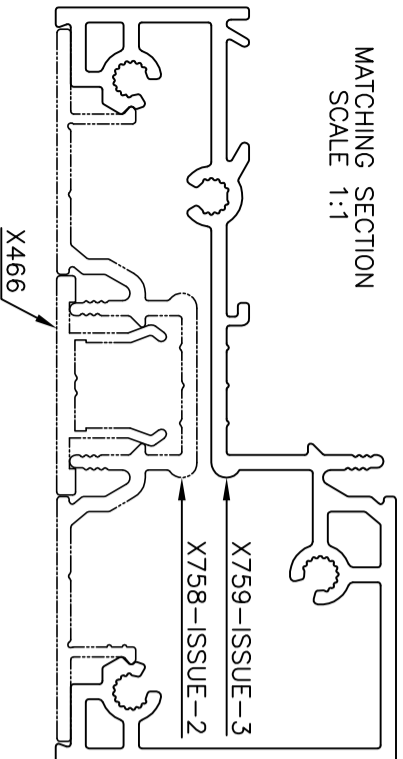
DETAIL OF "D"
SCALE 3:1



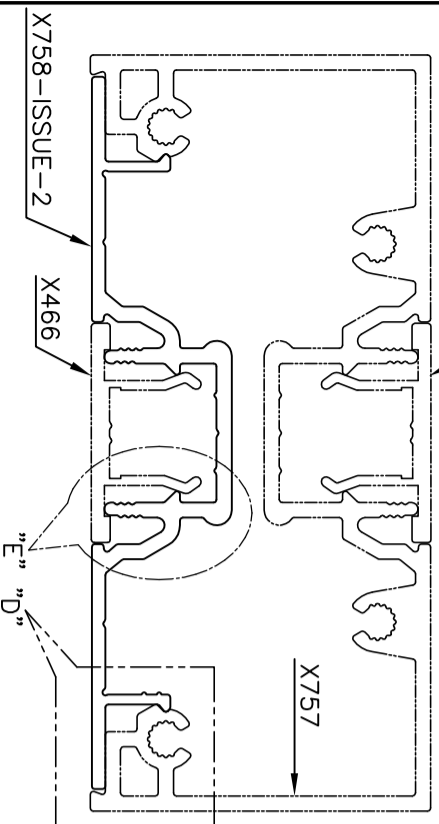
ISSUE - 2
DIMENSION REDUCED FROM 21.8 mm TO 18.5 mm & WEIGHT ALSO CHANGED FROM 0.841 kg/m TO 0.804 kg/m

UNSPECIFIED WALL THICKNESS = 2.00 mm
P = PIP 0.3x90° (3 PLACES)
V = V'-GROOVE 0.3x90° (2 PLACES)

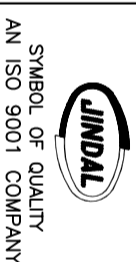
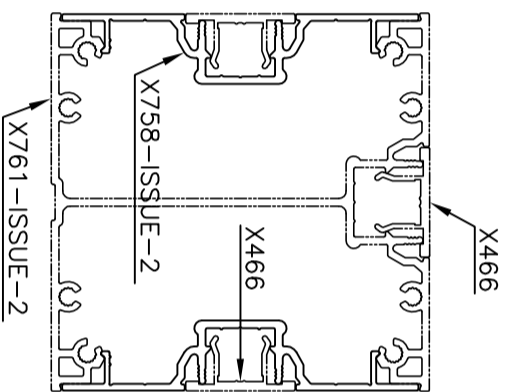
MATCHING SECTION
SCALE 1:1



MATCHING SECTION
SCALE 1:1



MATCHING SECTION
SCALE 1:2



JINDAL ALUMINIUM LTD.
BANGALORE-560073 (INDIA)

- 1. ALL DIMENSIONS ARE IN mm.
- 2. ROUND OFF ALL SHARP CORNERS WITH 0.40 mm.
- 3. TOLERANCES WILL BE AS PER EN12020-2:2001 UNLESS OTHERWISE SPECIFIED

PARTY'S NAME		MEERA ALUMINIUM UK LTD., UNITED KINGDOM	
PARTY'S DRAWING No.		GS-1009 SECTION	
ALLOY & TEMPER		6063 T6	
DESCRIPTION		MISC. SECTION	

DRAWN	NAME	DATE
CHECKED	PRASANN. H	13-05-2008
APPROVED		

SCALE	1:1
AREA mm ²	297.943
PERIMETER mm.	323.355
WEIGHT kg/m	0.804 (2)

DRAWING No.	SECTION No.
P-7476	-
X758	X758-ISSUE-2