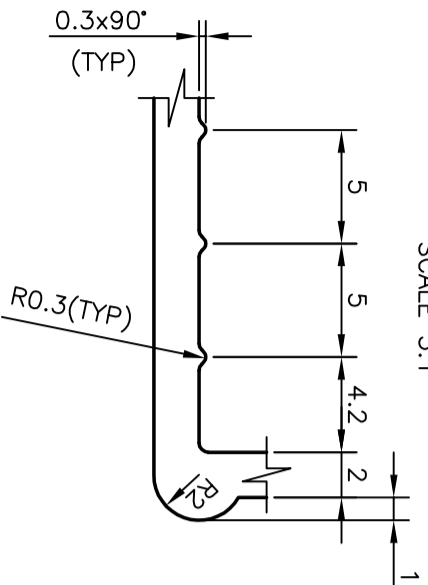


P-7539

X759

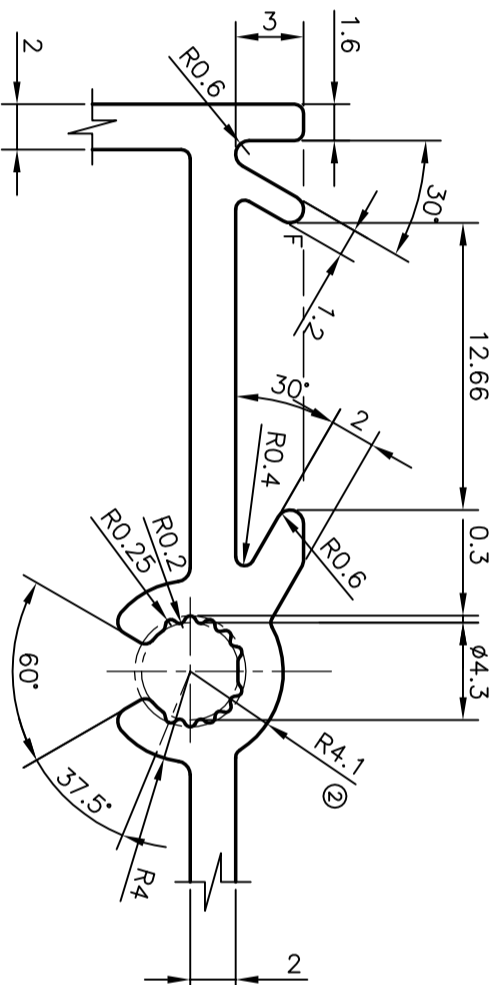
DETAIL OF "C"
SCALE 3:1



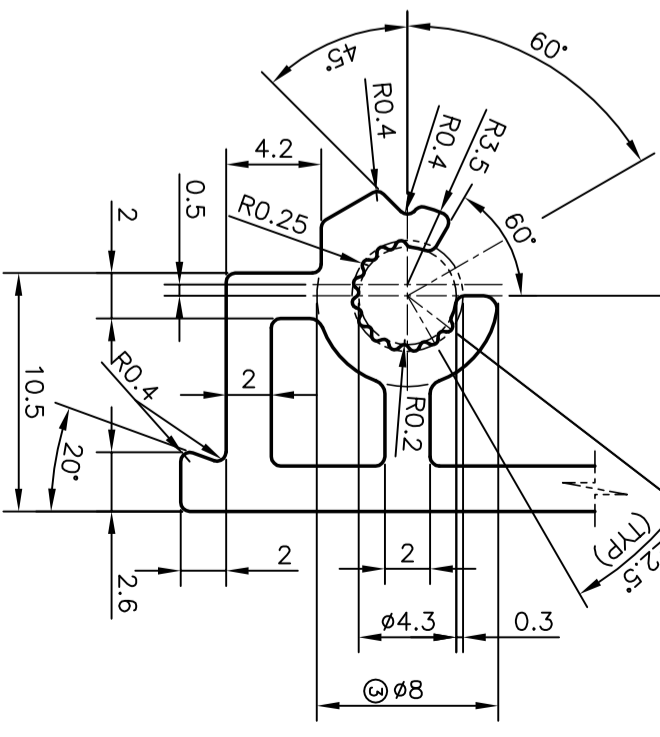
ISSUE-2 SCREW BOX (DETAIL "D") DIMENSION CHANGED FROM R3.50mm TO R4.10mm & 1 NO. GROOVE REMOVED TO STRENGTHEN THE SECTION

ISSUE-3 SCREW BOX (DETAIL "D") DIMENSION CHANGED FROM R3.50mm TO R4.00mm, $\phi 7.0$ mm TO $\phi 8.0$ mm & 1 NO. AND WEIGHT ALSO CHANGED FROM 1.511 kg/m TO 1.602 kg/m

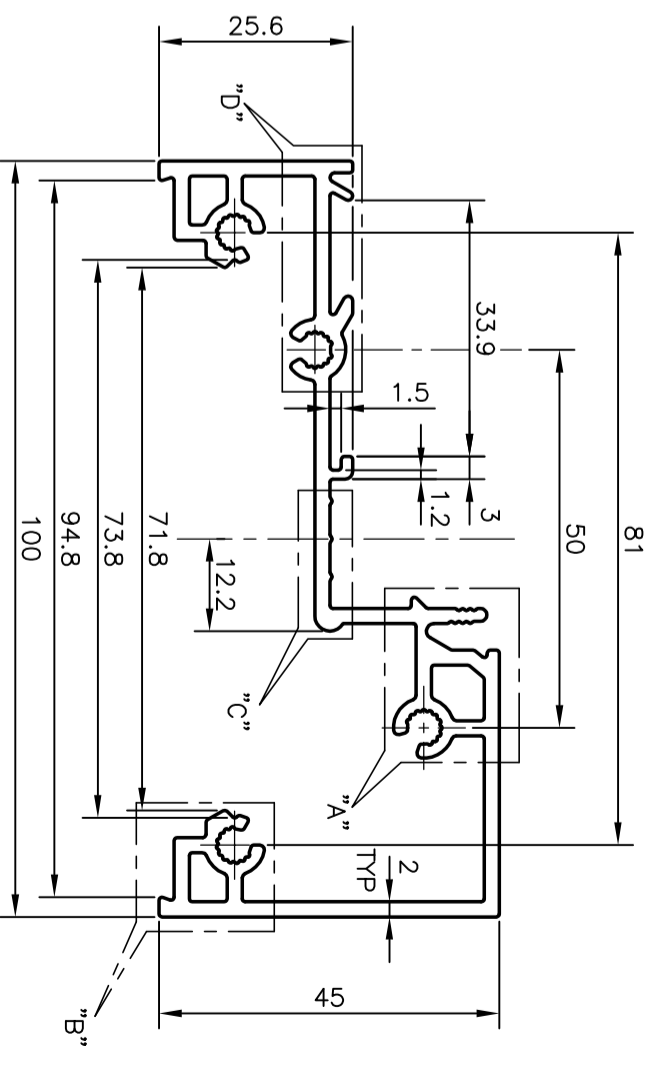
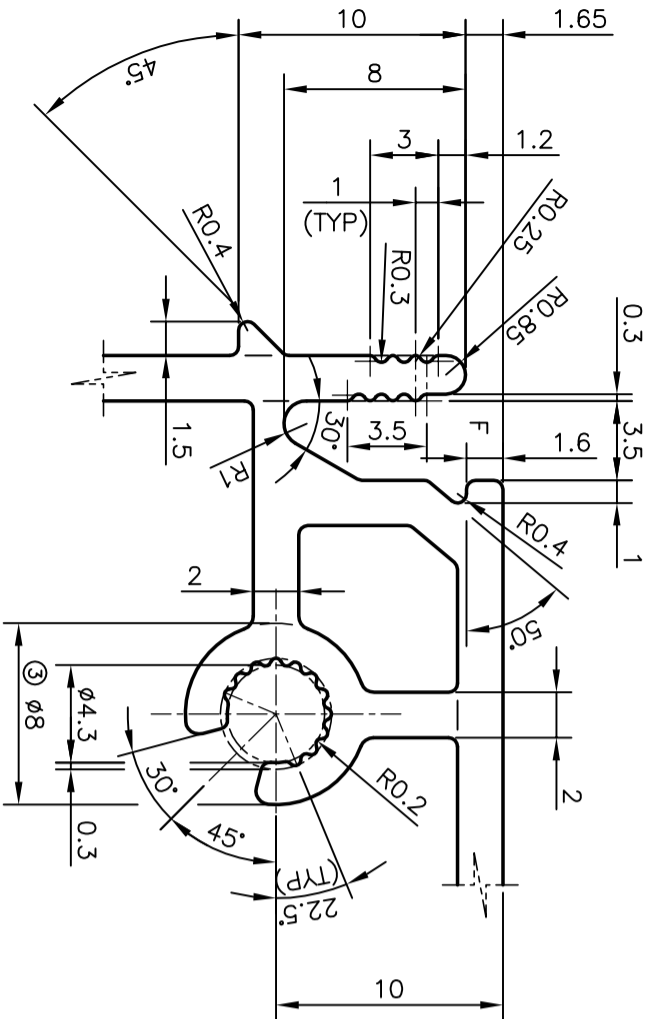
DETAIL OF "D"
SCALE 3:1



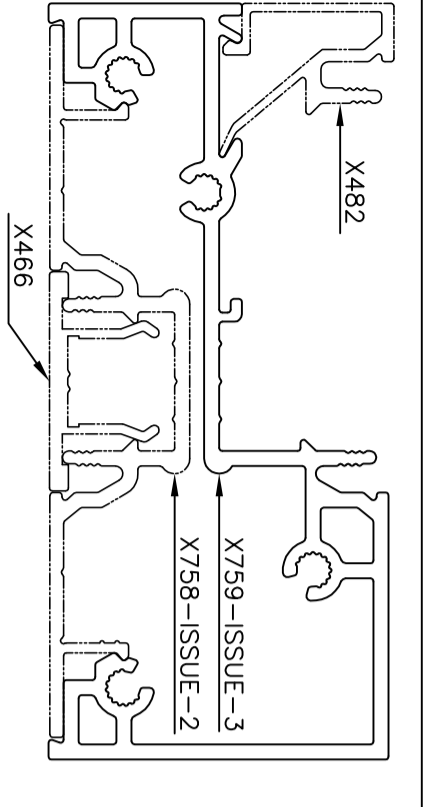
DETAIL OF "B"
SCALE 3:1




DETAIL OF "A"
SCALE 3:1



GENERAL WALL THICKNESS = 2.00 mm
F = FULL RADIUS (2 PLACE)



 SYMBOL OF QUALITY AN ISO 9001 COMPANY		JINDAL ALUMINIUM LTD. BANGALORE-560073 (INDIA)		DRAWN	NAME	DATE
				CHECKED	PRASANNA.H	14-05-2008
1. ALL DIMENSIONS ARE IN mm. 2. ROUND OFF ALL SHARP CORNERS WITH 0.40 mm. 3. TOLERANCES WILL BE AS PER EN12020-2:2001 UNLESS OTHERWISE SPECIFIED		SCALE 1:1		AREA	593.464	
				PERIMETER	532.948	
PARTY'S NAME		MEERA ALUMINIUM UK LTD., UNITED KINGDOM		WEIGHT kg/m	1.602	(3)
PARTY'S DRAWING No.		MA 1002		DRAWING No.		SECTION No.
ALLOY & TEMPER		6063 T6		P-7539		
DESCRIPTION		MISC. SECTION		X759		X759-ISSUE-3